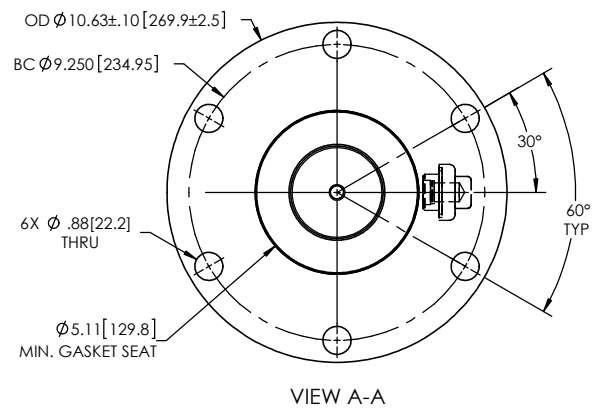
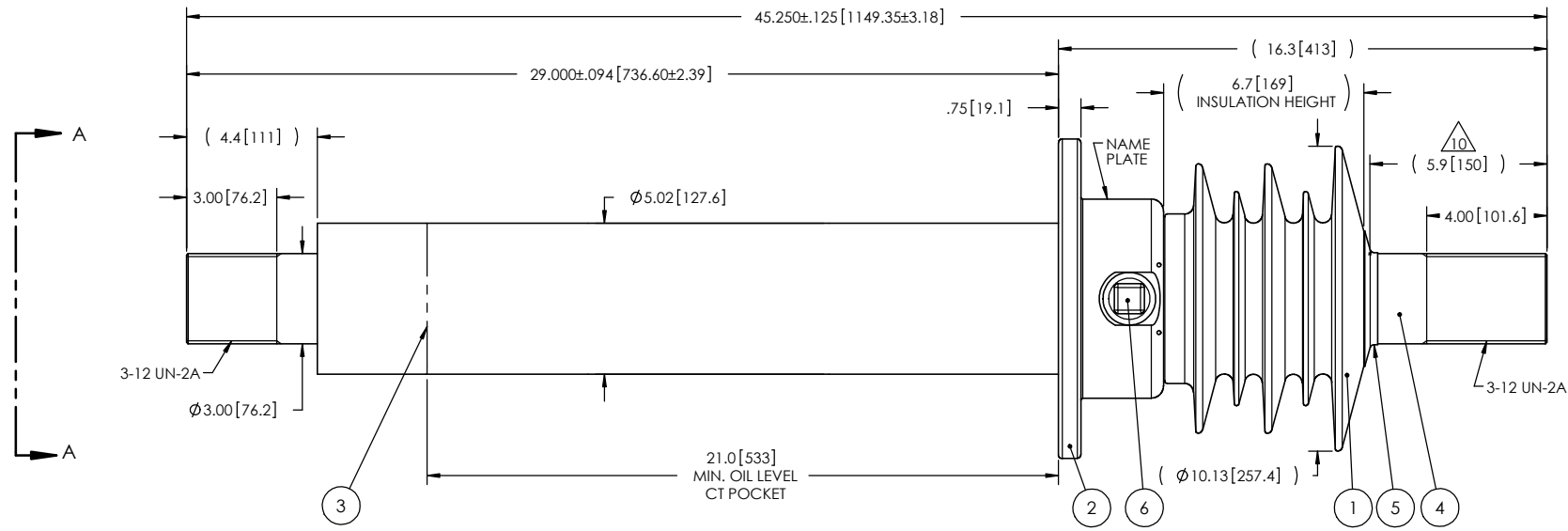


NOTES:

- 1 CREEPAGE DISTANCE: 20.1" / 511mm
- 2 ARC DISTANCE: 9.7" / 246mm
- 3 NOMINAL VOLTAGE: 15kV
- 4 NOMINAL CURRENT: 4000A
- 5 VOLTAGE WITHSTAND, 60 sec.: 50kV
- 6 BIL: 110kV
- 7 ROUTINE TEST ACCORDING TO: IEEE C57.19.00-1991
- 8 MAX. TORQUE APPLIED ON FLANGE BOLTS: 70 lbf·ft / 94.9 N·m
- 9 WEIGHT: 148 lb / 67.1 Kg
- 10 SILVER PLATED, AS PER ASTM B700, TYPE 1, GRADE D, CLASS N, NO NICKEL LAYER, FROM 13 TO 20 MICROMETERS THICKNESS

REVISIONS					
ZONE	REV.	DESCRIPTION	DRAWN BY	DATE	APPR.



ITEM NO.	QTY	DRAWING NO.	PART NO.	DESCRIPTION	NOTE / MAT'L
6	1	S-1001-2022		CAPACITANCE TAP ASSEMBLY	ALUMINUM
5	1	S-3529-2532-0		CAP	COPPER
4	1	S-7434-7203		ROD ASSEMBLY	COPPER
3	1	S-5670-5342		SHIELD ASSEMBLY	COPPER
2	1	S-7434-7202		FLANGE	ALUMINUM
1	1	S-4334-9279	-001	CASTING, CYCLOALIPHATIC RESIN	EC-APG-02

PARTS LIST			
GENERAL TOLERANCES (UNLESS OTHERWISE SPECIFIED)		Electro Composites™ solid HV bushings solution	
X.	±0.125		
.X	±0.094	TITLE: SDC® BUSHING 15kV, 4000A MODEL: 110-040-T-724-02	
.XX	±0.063	DRAWN BY: J. CLICHE DATE: 2017/02/22	
.XXX	±0.031	CHECK BY:	
ANGLES	±0.25°	PROJECTING:	
RADIUS	±0.031	PROJECT MANAGER:	
REMOVE BURRS AND BREAK SHARP EDGES		FORMAT: A CAGE CODE: S-4334-9279 REVISION: NR	
DIMENSIONS ARE IN INCHES (UNLESS OTHERWISE SPECIFIED)		SCALE: 1:10	
		GENERATED BY: SolidWorks 2013 SHEET: 1 of 1	

This drawing is the proprietary property of Electro Composites (2008) ULC, not part of the public domain, and is issued with the express understanding and agreement that it is not to be reproduced or copied in whole or in part or issued for furnishing information to others, or used directly or indirectly, in any way detrimental to the interest of Electro Composites (2008) ULC and is to be returned upon request by Electro Composites (2008) ULC. All Rights Reserved.