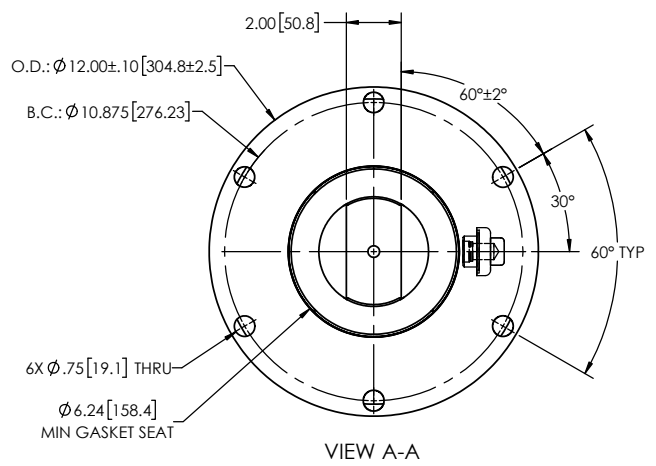
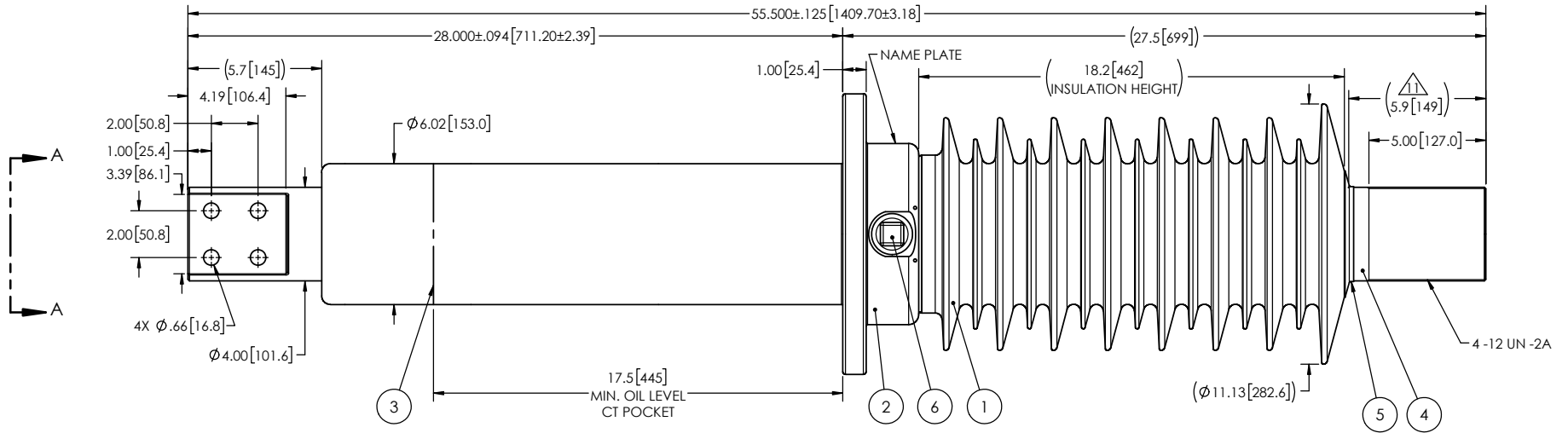


- NOTES:
- 1 CREEPAGE DISTANCE: 55.4" / 1406mm
  - 2 ARC DISTANCE: 20.9" / 530mm
  - 3 VOLTAGE CLASS: 27.5kV
  - 4 NOMINAL CURRENT: 3500A
  - 5 VOLTAGE WITHSTAND, 60 sec.: 55kV
  - 6 BIL : 150kV
  - 7 ROUTINE TEST ACCORDING TO: CEI 60137
  - 8 MAX. TORQUE APPLIED ON FLANGE BOLTS: 70 lbf·ft (94.9 N·m)
  - 9 WEIGHT: 292 lb / 132.4 kg
  - 10 INSULATION THERMAL LIMIT: 130°C. BUSHING RATED PER IEC 60137 USUAL SERVICE CONDITIONS.
- 11 TIN PLATED AS PER ASTM B545, ART. 4, SERVICE CLASS C, MIN. THICKNESS 320 µin.

REVISIONS					
ZONE	REV.	DESCRIPTION	DRAWN BY	DATE	APPR.
F4	A	NOTE # 10 UPDATED	M. FORGET	2023-05-12	Y.V.



ITEM NO.	QTY	DRAWING NO.	PART NO.	DESCRIPTION	NOTE / MAT'L
6	1	S-1001-2022		CAPACITANCE TAP ASSEMBLY	ALUMINUM
5	1	S-3974-3543		CAP	COPPER
4	1	S-7620-7207		ROD ASSEMBLY	COPPER
3	1	S-7620-7206		SHIELD ASSEMBLY	COPPER
2	1	S-5666-5360		FLANGE	ALUMINUM
1	1	S-1296-9883	-001	CASTING, CYCLOALIPHATIC RESIN	EC-APG-15NA

**Electro Composites™**  
**solid HV bushings solution**

TITLE: SDC® BUSHING 26.4kV, 3500A  
MODEL: 150-035-T-725-01

DRAWN BY: M. FORGET	DATE: 2019/02/01	FORMAT: A	CAGE CODE:	DRAWING NO.: S-1296-9883	REVISION: A
CHECK BY:		PROJECT ENG.:		GENERATED BY: SolidWorks 2022	SHEET: 1 of 1
PROJECT MGR.:		SCALE: 1:7			

GENERAL TOLERANCES (UNLESS OTHERWISE SPECIFIED)  
 X. ±0.125  
 .X ±0.094  
 .XX ±0.063  
 .XXX ±0.031  
 ANGLES ±0.25°  
 RADIUS ±0.031

REMOVE BURRS AND BREAK SHARP EDGES  
 DIMENSIONS ARE IN INCHES (UNLESS OTHERWISE SPECIFIED)

This drawing is the proprietary property of Electro Composites (2008) ULC, not part of the public domain, and is issued with the express understanding and agreement that it is not to be reproduced or copied in whole or in part or issued for furnishing information to others, or used directly or indirectly, in any way detrimental to the interest of Electro Composites (2008) ULC and is to be returned upon request by Electro Composites (2008) ULC. All Rights Reserved.