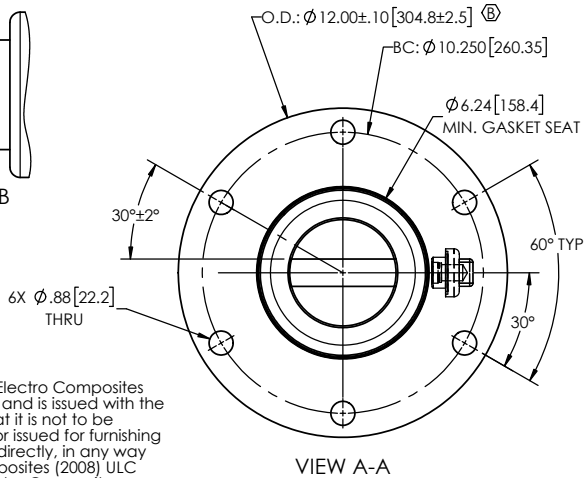
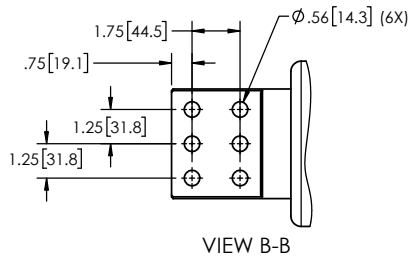
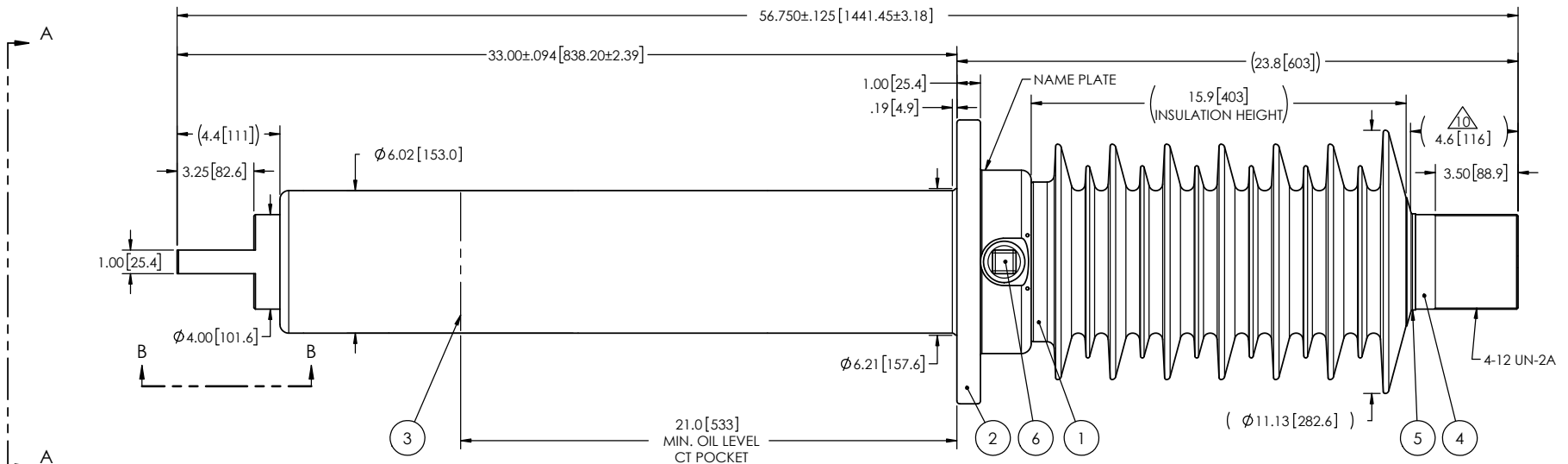


- NOTES:
- 1 CREEPAGE DISTANCE: 48.2" / 1224mm
  - 2 ARC DISTANCE: 18.6" / 472mm
  - 3 NOMINAL VOLTAGE: 25kV
  - 4 NOMINAL CURRENT: 5000A
  - 5 VOLTAGE WITHSTAND, 60 sec.: 60kV
  - 6 BIL: 150kV
  - 7 ROUTINE TEST ACCORDING TO: IEEE C57.19.01
  - 8 MAX. TORQUE APPLIED ON FLANGE BOLTS: 70 lbf·ft / 94.9 N·m
  - 9 WEIGHT: 297 lb / 134.7 kg
- △ SILVER PLATED, AS PER ASTM B700, TYPE 1, GRADE D, CLASS N, NO NICKEL LAYER, FROM 13 TO 20 MICROMETERS THICKNESS

REVISIONS					
ZONE	REV.	DESCRIPTION	DRAWN BY	DATE	APPR.
A2 B4 B5	A	ADD THE "SDC" DESIGNATION TO THE BUSHING NAME ADD THE "MINIMUM GASKET SEAT" DIMENSION ADD THE MEASURE OF THE ANGLE BETWEEN THE FLANGE AND A HOLE OF THE FLANGE	J. CLICHE	2014-05-15	Y.V.
A3, C4	B	INCREASE THE TOLERANCES ON THE FLANGE OUTSIDE DIAMETER.	M. FORGET	2023-02-07	Y.V.



ITEM NO.	QTY	DRAWING NO.	PART NO.	DESCRIPTION	NOTE / MAT'L
6	1	S-1001-2022		CAPACITANCE TAP ASSEMBLY	ALUMINUM
5	1	S-3974-3543		CAP	COPPER
4	1	S-0002-7261		ROD ASSEMBLY	COPPER
3	1	S-0002-7260		SHIELD ASSEMBLY	COPPER
2	1	S-7303-6882		FLANGE	ALUMINUM
1	1	S-0002-7249	-001	CASTING, CYCLOALIPHATIC RESIN	EC-APG-02

PARTS LIST

GENERAL TOLERANCES (UNLESS OTHERWISE SPECIFIED)

X.	±0.125
.X	±0.094
.XX	±0.063
.XXX	±0.031 <sup>ⓑ</sup>
ANGLES	±0.25°
RADIUS	±0.031

REMOVE BURRS AND BREAK SHARP EDGES

DIMENSIONS ARE IN INCHES (UNLESS OTHERWISE SPECIFIED)

**Electro Composites**  
solid HV bushings solution

TITLE: SDC® BUSHING 25kV, 5000A  
MODEL: 150-050-T-728-00

DRAWN BY: J. CLICHE DATE: 2012/05/10

CHECK BY:

PROJECT ENG.:

PROJECT MANAGER:

FORMAT: A

CAGE CODE:

DRAWING NO.:

REVISION: B

SCALE: 1:7



GENERATED BY: SolidWorks 2022

SHEET: 1 of 1

This drawing is the proprietary property of Electro Composites (2008) ULC, not part of the public domain, and is issued with the express understanding and agreement that it is not to be reproduced or copied in whole or in part or issued for furnishing information to others, or used directly or indirectly, in any way detrimental to the interest of Electro Composites (2008) ULC and is to be returned upon request by Electro Composites (2008) ULC. All Rights Reserved.