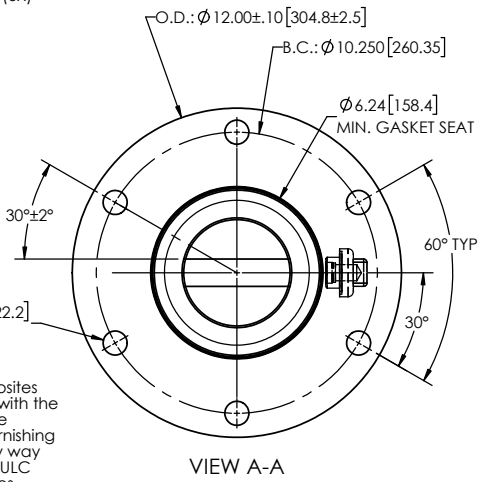
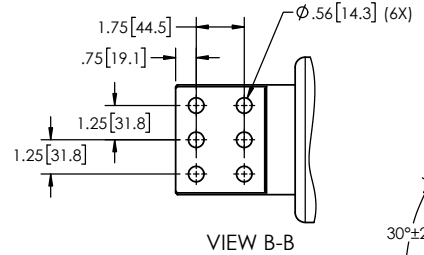
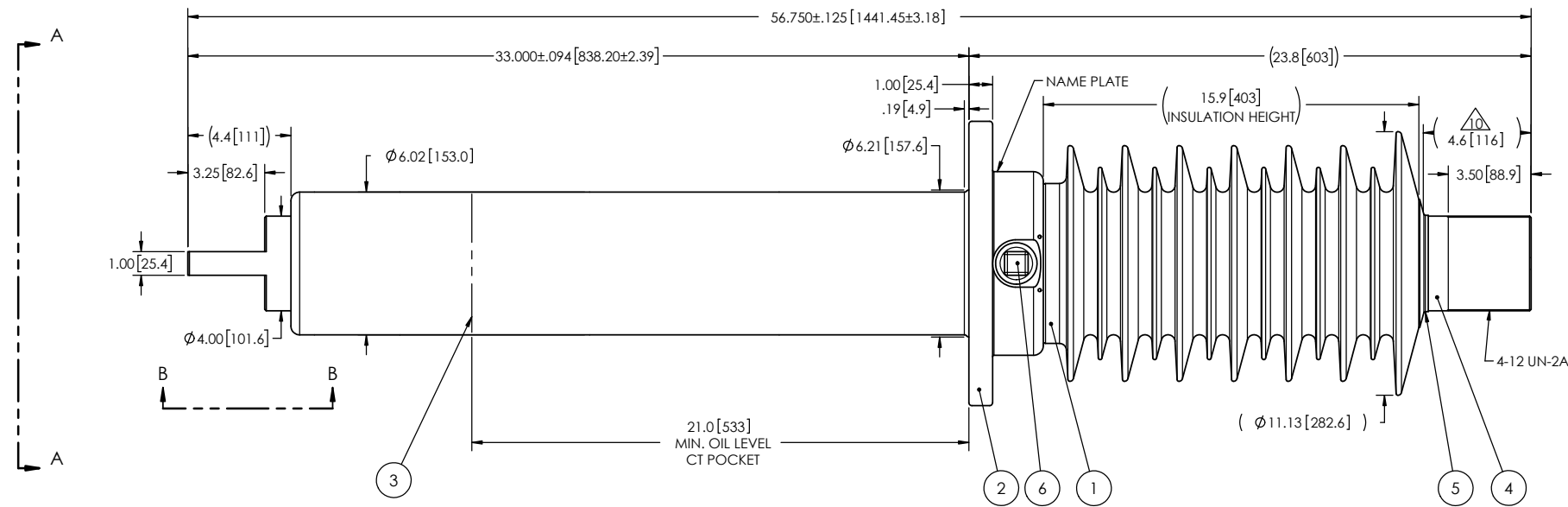


REVISIONS					
ZONE	REV.	DESCRIPTION	DRAWN BY	DATE	APPR.
	A	SOME DIMENSIONS HAVE BEEN ADJUSTED PER STANDARD	A.SAVARD	2017-05-10	Y.V.
E4	B	NOTE #11 UPDATED	M. FORGET	2022-02-11	Y.V.

- NOTES:
- 1 CREEPAGE DISTANCE: 48.2" / 1224mm
 - 2 ARC DISTANCE: 18.6" / 472mm
 - 3 NOMINAL VOLTAGE: 25kV
 - 4 NOMINAL CURRENT: 6000A
 - 5 VOLTAGE WITHSTAND, 60 sec.: 60kV
 - 6 BIL : 150kV
 - 7 ROUTINE TEST ACCORDING TO: IEEE C57.19.01
 - 8 MAX. TORQUE APPLIED ON FLANGE BOLTS: 70 lbf·ft / 94.9 N·m
 - 9 WEIGHT: 297 lb / 134.7 kg
 - 10 SILVER PLATED, AS PER ASTM B700, TYPE 1, GRADE D, CLASS N, NO NICKEL LAYER, FROM 13 TO 20 MICROMETERS THICKNESS
 - 11 INSULATION THERMAL LIMIT: 130°C. BUSHING RATED PER IEEE C57.19.00 USUAL SERVICE CONDITIONS. Ⓟ
 - 12 NOT SUITABLE FOR BUS DUCT APPLICATION



ITEM NO.	QTY	DRAWING NO.	PART NO.	DESCRIPTION	NOTE / MAT'L
6	1	S-1001-2022		CAPACITANCE TAP ASSEMBLY	ALUMINUM
5	1	S-3974-3543		CAP	COPPER
4	1	S-0002-7261		ROD ASSEMBLY	COPPER
3	1	S-0002-7260		SHIELD ASSEMBLY	COPPER
2	1	S-7303-6882		FLANGE	ALUMINUM
1	1	S-8861-8585	-001	CASTING, CYCLOALIPHATIC RESIN	EC-APG-15NA

PARTS LIST					
GENERAL TOLERANCES (UNLESS OTHERWISE SPECIFIED)			ElectroComposites™ solid HV bushings solution		
X.	±0.125	TITLE: SDC® BUSHING 25kV, 6000A MODEL: 150-060-T-728-02			
.X	±0.094		DRAWN BY: J.N.PILOTTE DATE: 2014/09/29		
.XX	±0.063	CHECK BY:	FORMAT: A	CAGE CODE:	DRAWING NO.: S-8861-8585
.XXX	±0.031	PROJECT ENG.:	SCALE: 1:7	GENERATED BY: SolidWorks 2021	REVISION: B
ANGLES	±0.25°	PROJECT MGR.:	SCALE:	SHEET: 1 of 1	
RADIUS	±0.031				

This drawing is the proprietary property of Electro Composites (2008) ULC, not part of the public domain, and is issued with the express understanding and agreement that it is not to be reproduced or copied in whole or in part or issued for furnishing information to others, or used directly or indirectly, in any way detrimental to the interest of Electro Composites (2008) ULC and is to be returned upon request by Electro Composites (2008) ULC. All Rights Reserved.