
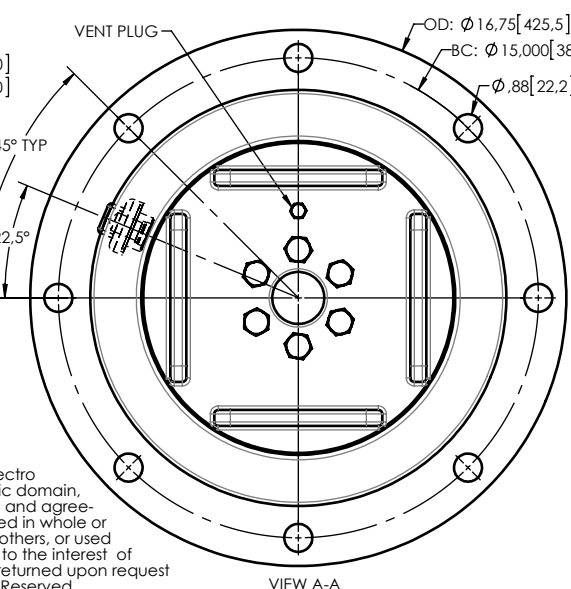
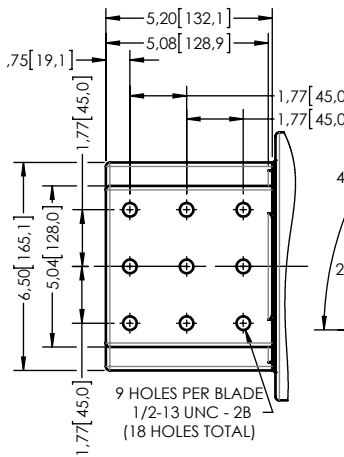
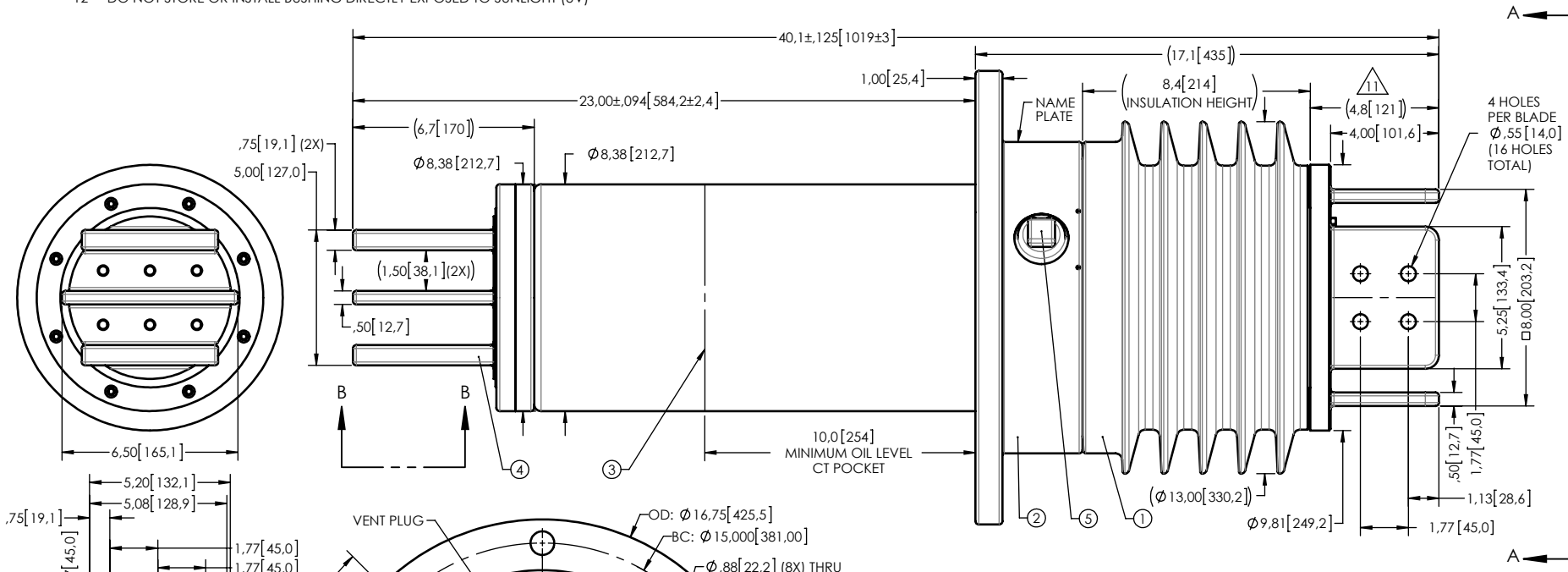


- NOTES:
- 1 CREEPAGE DISTANCE: 20.7" / 526mm
 - 2 ARC DISTANCE: 9.4" / 239mm
 - 3 NOMINAL VOLTAGE: 15kV
 - 4 NOMINAL CURRENT: 8,000A (MAX. 55°C RISE)
 - 5 WITHSTAND VOLTAGE AT 60 sec.: 50kV
 - 6 B.I.L. : 110kV
 - 7 ROUTINE TEST ACCORDING TO: CSA C88.1-96
 - 8 MAX. TORQUE APPLIED ON FLANGE BOLTS: 70 lbf x ft
 - 9 WEIGHT: 250.1 lb / 113.44 Kg
 - 10 MAXIMUM OPERATING TEMPERATURE: UP TO 130°C (266°F)

-  SILVER PLATED, AS PER ASTM B700, TYPE 1, GRADE D, CLASS N, NO NICKEL LAYER, FROM 13 TO 20 MICROMETERS THICKNESS
 12 DO NOT STORE OR INSTALL BUSHING DIRECTLY EXPOSED TO SUNLIGHT (UV)



This drawing is the proprietary property of Electro Composites (2008) ULC, not part of the public domain, and is issued with the express understanding and agreement that it is not to be reproduced or copied in whole or in part or issued for furnishing information to others, or used directly or indirectly, in any way detrimental to the interest of Electro Composites (2008) ULC and is to be returned upon request by Electro Composites (2008) ULC. All Rights Reserved.

ITEM NO.	QTY	DRAWING NO.	PART NO.	DESCRIPTION	NOTE / MATL
5	1	S-1001-2022		CAPACITANCE TAP ASSEMBLY	ALUMINUM
4	1	S-7543-7243		ROD ASSEMBLY	COPPER
3	1	S-7543-7241		SHIELD ASSEMBLY	BRASS
2	1	S-7543-7240		FLANGE	ALUMINUM
1	1	S-7543-7239	-001	CASTING: BISPHENOL RESIN	EC-APG-15

PARTS LIST

GENERAL TOLERANCES (UNLESS OTHERWISE SPECIFIED) X. ±0.125 .X ±0.094 .XX ±0.063 .XXX ±0.031 ANGLES ±0.25° RADIUS ±0.031		Electro Composites solid HV bushings solution TITLE: GSU BUSHING 15kV, 8,000A MODEL: 110-080-G-731-00	
DRAWN BY: J. CLICHE	DATE: 2012/05/04	FORMAT: A	CAGE CODE: S-7543-7239
CHECK BY:	PROJECT ENG.:	SCALE: 1:6	GENERATED BY: SolidWorks 2012
PROJECT MGR.:	SHEET: 1 of 1	REVISION: NR	

F
E
D
C
B
A

F
E
D
C
B
A

6 5 4 3 2 1

6 5 4 3 2 1