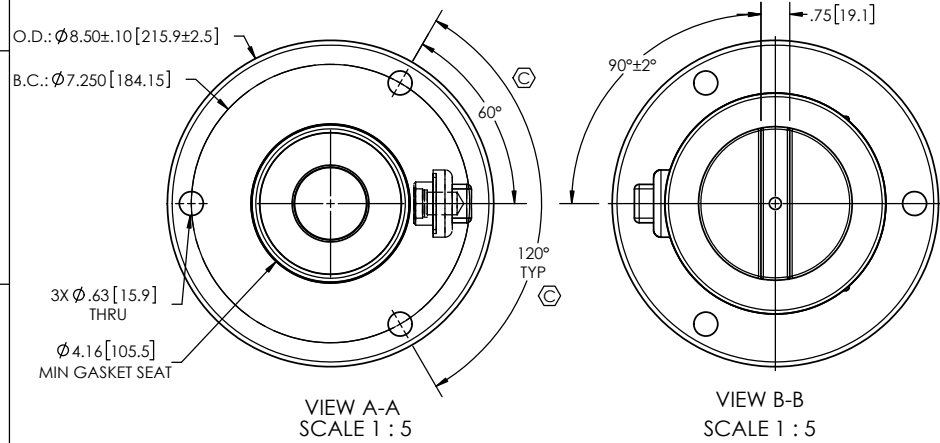
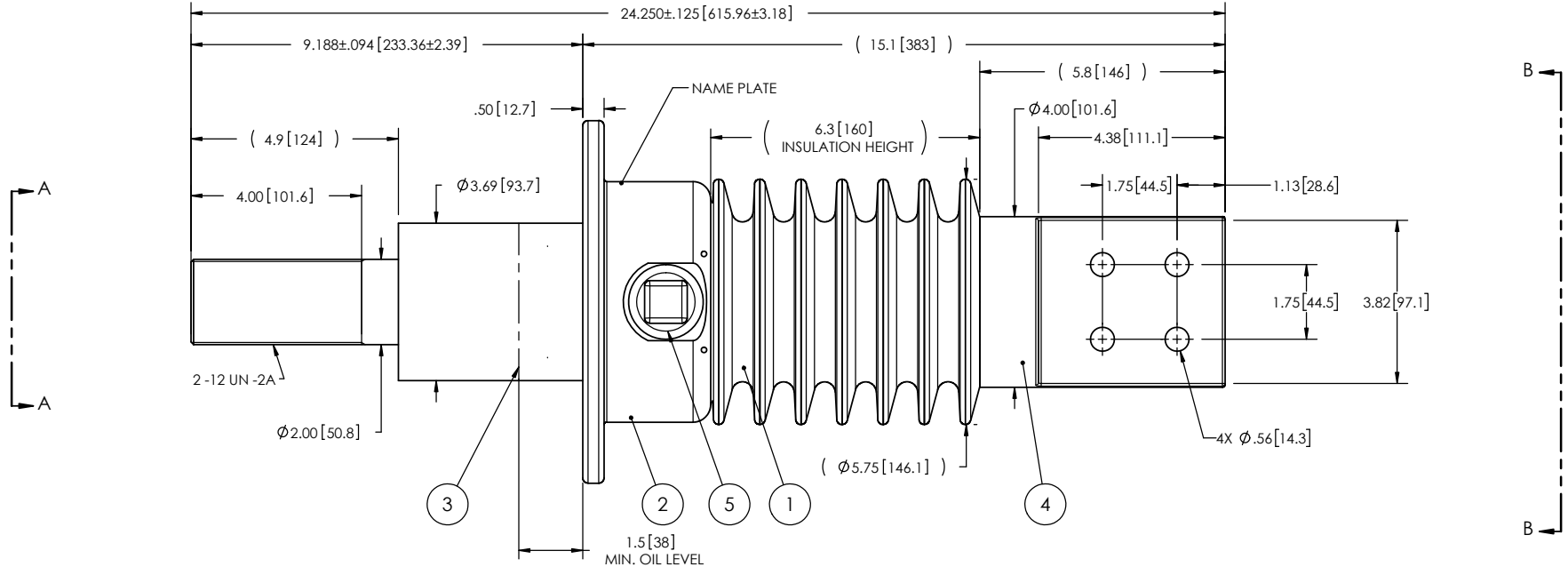


NOTES:

- 1 CREEPAGE DISTANCE: 16.1"/408mm
- 2 ARC DISTANCE: 7.1" / 181mm
- 3 NOMINAL VOLTAGE: 15kV
- 4 NOMINAL CURRENT: 3000A
- 5 WITHSTAND VOLTAGE AT 60 sec.: 50kV
- 6 BIL: 110kV
- 7 ROUTINE TEST ACCORDANCE TO: IEEE C57.19.01
- 8 MAX. TORQUE APPLIED ON FLANGE BOLTS: 40 lbf·ft / 54.2 N·m
- 9 WEIGHT: 43 lb / 19.5 kg

RÉVISIONS					
ZONE	REV.	DESCRIPTION	DESSINÉ PAR	DATE	APPR.
B4	A	ADD CAPACITANCE TAP ASSEMBLY	J.N.PILOTTE	2014-03-25	Y.V.
B6	B	CHANGE 4 HOLES FOR 3 HOLES	J.N.PILOTTE	2014-03-26	Y.V.
--	A5, B5	GENERAL UPDATE TO CURRENT STANDARD CHANGE ANGULAR DIMENSION OF FLANGE HOLES	M. FORGET	2021-05-05	Y.V.



ITEM NO.	QTY	DRAWING NO.	PART NO.	DESCRIPTION	NOTE / MAT'L
5	1	S-1001-2022		CAPACITANCE TAP ASSEMBLY	ALUMINUM
4	1	S-7919-7381		ROD ASSEMBLY	COPPER
3	1	S-7919-7380		SHIELD ASSEMBLY	COPPER
2	1	S-7919-7379		FLANGE	ALUMINUM
1	1	S-7919-7378	-001	CASTING, CYCLOALIPHATIC RESIN	EC-APG-02

PARTS LIST					
GENERAL TOLERANCES (UNLESS OTHERWISE SPECIFIED)			REPLACE:		Electro Composites solid HV bushings solution TITLE: SDC® BUSHING 15kV, 3000A MODEL: 110-030-T-743-00
X.	±.125	DRAWN BY: J.N.PILOTTE		DATE: 2012/08/03	
.X	±.094	CHECK BY:			
.XX	±.063	PROJECT ENG.:			
.XXX	±.031	PROJECT MGR.:			
ANGLES	±.25°	SCALE: 1:4		GENERATED BY: SolidWorks 2020	SHEET: 1 of 1
RADIUS	±.031	REMOVE BURRS AND BREAK SHARP EDGES			
DIMENSIONS ARE IN INCHES (UNLESS OTHERWISE SPECIFIED)					

This drawing is the proprietary property of Electro Composites (2008) ULC, not part of the public domain, and is issued with the express understanding and agreement that it is not to be reproduced or copied in whole or in part or issued for furnishing information to others, or used directly or indirectly, in any way detrimental to the interest of Electro Composites (2008) ULC and is to be returned upon request by Electro Composites (2008) ULC. All Rights Reserved.