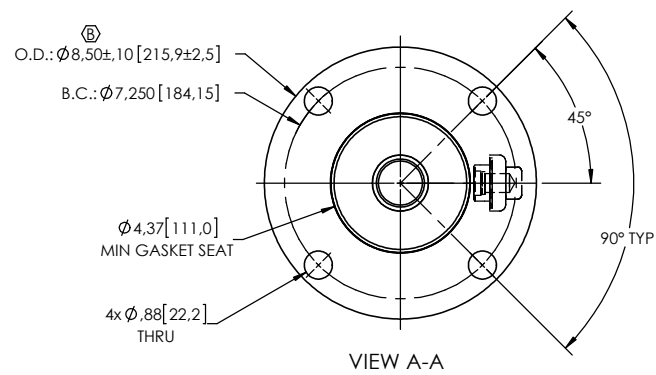
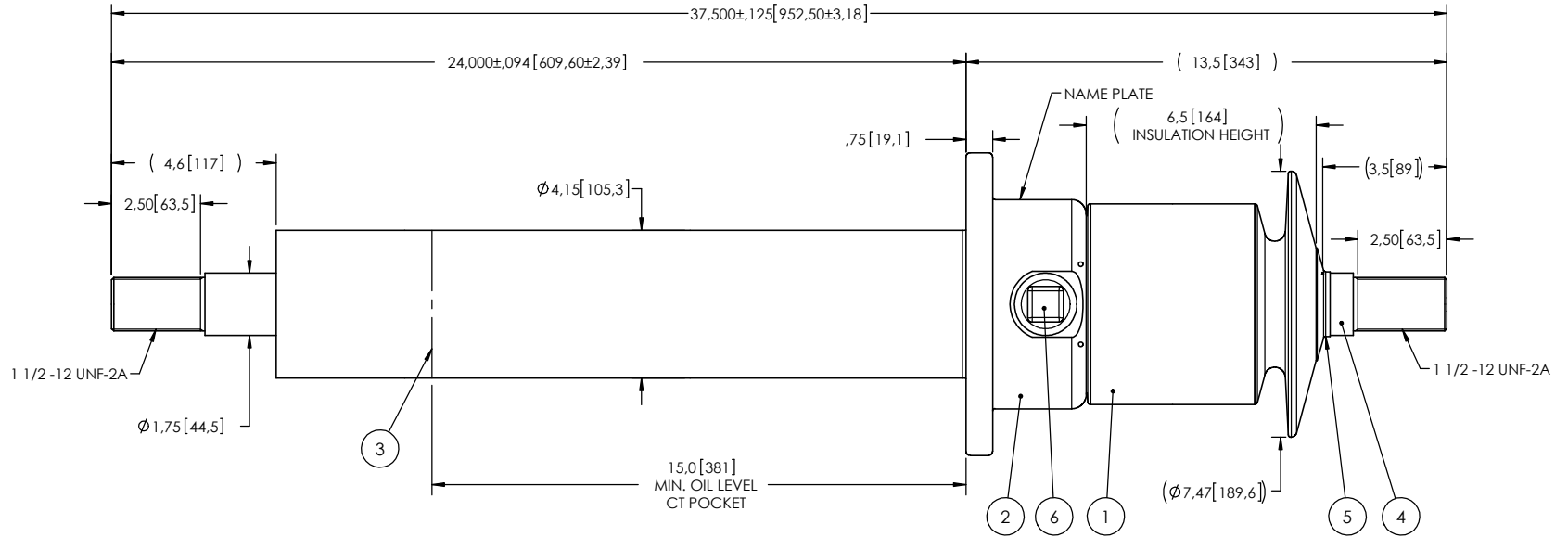


NOTES:

- 1 CREEPAGE DISTANCE: 10.7" / 271mm
- 2 ARC DISTANCE: 8.3" / 211 mm
- 3 NOMINAL VOLTAGE: 34.5kV
- 4 NOMINAL CURRENT: 2000A
- 5 VOLTAGE WITHSTAND, 60 sec.: 80kV
- 6 BIL: 200kV
- 7 ROUTINE TEST ACCORDING TO: IEEE C57.19.00-1991
- 8 MAX. TORQUE APPLIED ON FLANGE BOLTS: 40 lbf X ft / 54.2 N.m
- 9 WEIGHT: 60 lb / 27.2 kg
- 10 FOR OIL-OIL APPLICATIONS ONLY

RÉVISIONS

ZONE	REV.	DESCRIPTION	DESSINÉ PAR	DATE	APPR.
C5	A	CHANGE THE DIAMETER OF THE ROD WAS Ø1.5" BECOMES Ø1.75" CHANGE THE CAP	J.N.P.	2014-07-01	Y.V.
B6,	B	INCREASE THE TOLERANCES ON THE FLANGE OUTSIDE DIAMETER. + THE OUTSIDE FLANGE DIAMETER HAS BEEN CHANGED FROM 8.75 TO 8.50	A.SAVARD	2018-02-16	Y.V.



ITEM NO.	QTY	DRAWING NO.	PART NO.	DESCRIPTION	NOTE / MATL
6	1	S-1001-2022		CAPACITANCE TAP ASSEMBLY	ALUMINUM
5	1	S-1600-0587-0		CAP	COPPER
4	1	S-7852-7415		ROD ASSEMBLY	COPPER
3	1	S-7852-7414		SHIELD ASSEMBLY	COPPER
2	1	S-7852-7413		FLANGE	ALUMINUM
1	1	S-7852-7412	-001	CASTING, CYCLOALIPHATIC RESIN	EC-APG-02

PARTS LIST

GENERAL TOLERANCES (UNLESS OTHERWISE SPECIFIED)

X. ±0.125
 .X ±0.094
 .XX ±0.063
 .XXX ±0.031
 ANGLES ±0.25°
 RADIUS ±0.031

REMOVE BURRS AND BREAK SHARP EDGES

DIMENSIONS ARE IN INCHES (UNLESS OTHERWISE SPECIFIED)

DRAWN BY: J.N.PILOTE DATE: 2012/08/15

CHECK BY:

PROJECT MGR.:

Electro Composites™
solid HV bushings solution

TITLE: SDC® BUSHING 34.5kV, 2000A
 MODEL: 200-020-T-747-00

FORMAT: A	CAGE CODE:	DRAWING NO.: S-7852-7412	REVISION: B
SCALE: 1:10	GENERATED BY: SolidWorks 2013	SHEET: 1 of 1	

This drawing is the proprietary property of Electro Composites (2008) ULC, not part of the public domain, and is issued with the express understanding and agreement that it is not to be reproduced or copied in whole or in part or issued for furnishing information to others, or used directly or indirectly, in any way detrimental to the interest of Electro Composites (2008) ULC and is to be returned upon request by Electro Composites (2008) ULC. All Rights Reserved.