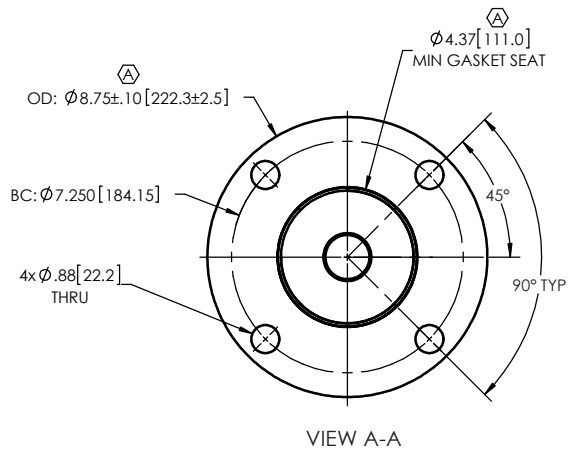
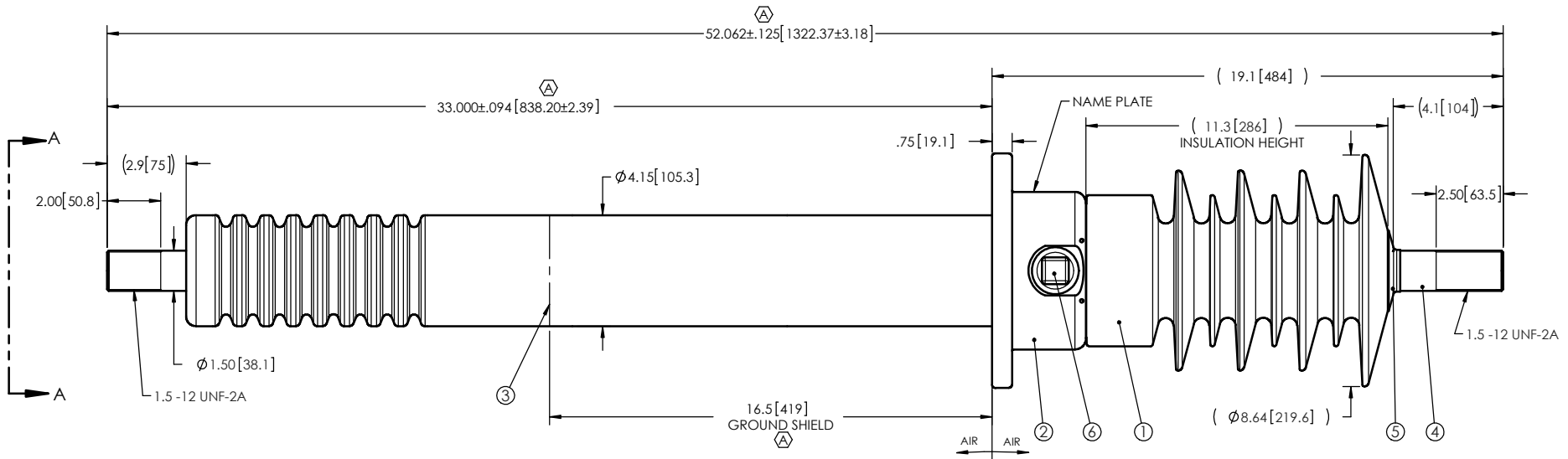


NOTES:

- | | | |
|--|---------------------|-----------------------|
| 1 CREEPAGE DISTANCE: | TOP: 30.8" / 782mm | BOTTOM: 16.0" / 406mm |
| 2 ARC DISTANCE: | TOP: 13.6" / 346 mm | BOTTOM: 12.0" / 305mm |
| 3 NOMINAL VOLTAGE: | 34.5kV | |
| 4 NOMINAL CURRENT: | 1200A | |
| 5 WITHSTAND VOLTAGE AT 60 sec.: | 80kV | |
| 6 B.I.L.: | 200kV | |
| 7 ROUTINE TEST ACCORDING TO: | IEEE C57.19.00-1991 | |
| 8 MAX. TORQUE APPLIED ON FLANGE BOLTS: | 40 lbf X ft | |
| 9 WEIGHT: | 76 lb / 34.5 Kg | |

ZONE		REV.	DESCRIPTION	DRAWN BY	DATE	APPR.
C5 E4, E3 B6		A	UPDATE DRAWING BY CURRENT STANDARD ADD MIN. GASKET SEAT CHANGE SIGNIFICANT DIGITS ADD TOLERANCE TO OD ± 0.10	J.N.PILOTTE	2016-08-30	J.V.



ITEM NO.	QTY	DRAWING NO.	PART NO.	DESCRIPTION	NOTE / MATL
6	1	S-1001-2022		CAPACITANCE TAP ASSEMBLY	ALUMINUM
5	1	S-1001-0007		CAP	COPPER
4	1	S-7866-7441		ROD ASSEMBLY	COPPER
3	1	S-7866-7440		SHIELD ASSEMBLY	COPPER
2	1	S-6411-7311		FLANGE	ALUMINUM
1	1	S-7866-7439	-001	CASTING, CYCLOALIPHATIC RESIN	EC-APG-02

PARTS LIST

<p>GENERAL TOLERANCES (UNLESS OTHERWISE SPECIFIED)</p> <p>X. ±0.125 .X ±0.094 .XX ±0.063 .XXX ±0.031 ANGLES ±0.25° RADIUS 0.031</p> <p>REMOVE BURRS AND BREAK SHARP EDGES</p> <p>DIMENSIONS ARE IN INCHES (UNLESS OTHERWISE SPECIFIED)</p>		<p>Electro Composites™ solid HV bushings solution</p> <p>TITLE: SDC® BUSHING 34.5kV, 1200A MODEL: 200-012-W-752-00</p>	
DRAWN BY: J.N.PILOTTE	DATE: 2012/08/15	FORMAT: A	REVISION: A
PROJECT NO.:	PROJECT MANAGER:	SCALE: 1 : 10	GENERATED BY: SolidWorks 2013
		DRAWING NO.: S-7866-7439	SHEET: 1 of 1

This drawing is the proprietary property of Electro Composites (2008) ULC, not part of the public domain, and is issued with the express understanding and agreement that it is not to be reproduced or copied in whole or in part or issued for furnishing information to others, or used directly or indirectly, in any way detrimental to the interest of Electro Composites (2008) ULC and is to be returned upon request by Electro Composites (2008) ULC. All Rights Reserved.