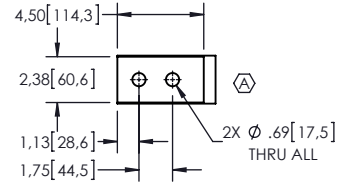


NOTES:

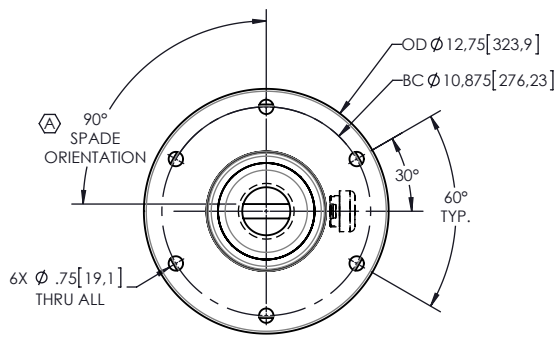
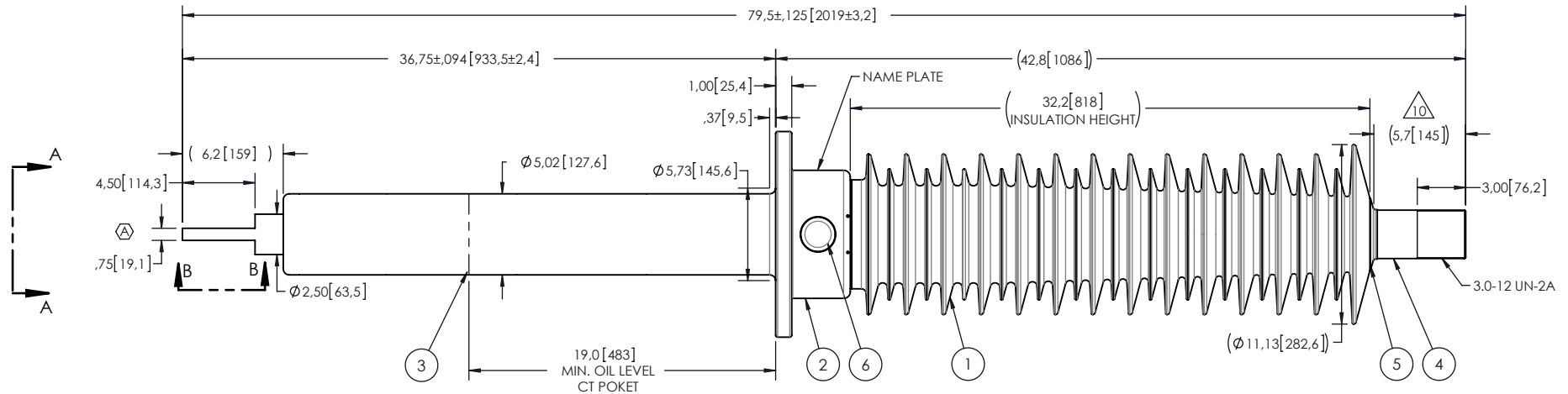
- 1 CREEPAGE DISTANCE: 109.8" / 2791mm
- 2 ARC DISTANCE: 35.4" / 998mm
- 3 NOMINAL VOLTAGE: 69kV
- 4 NOMINAL CURRENT: 3000A
- 5 WITHSTAND VOLTAGE AT 60 sec.: 160kV
- 6 B.I.L.: 350kV
- 7 ROUTINE TEST ACCORDING TO: IEEE C57.19.01
- 8 MAX. TORQUE APPLIED ON FLANGE BOLTS: 70 lbf X ft
- 9 WEIGHT: 256 lb / 116.2 Kg

10 SILVER PLATED TOP END, AS PER ASTM B700, TYPE 1, GRADE D, CLASS N, NO NICKEL LAYER, FROM 13 TO 20 MICROMETERS THICKNESS

REVISIONS					
ZONE	REV.	DESCRIPTION	DRAWN BY	DATE	APPR.
	A	SPADE HAS BEEN ROTATED OF 90°	A.SAVARD	2012-11-19	J.V.



SECTION B-B



VIEW A-A

This drawing is the proprietary property of Electro Composites (2008) ULC, not part of the public domain, and is issued with the express understanding and agreement that it is not to be reproduced or copied in whole or in part or issued for furnishing information to others, or used directly or indirectly, in any way detrimental to the interest of Electro Composites (2008) ULC and is to be returned upon request by Electro Composites (2008) ULC. All Rights Reserved.

ITEM NO.	QTY	DRAWING NO.	PART NO.	DESCRIPTION	NOTE / MAT'L
6	1	S-2878-2606		CAPACITANCE TAP ASSEMBLY	ALUMINUM
5	1	S-3529-2532-0		CAP	COPPER
4	1	S-7508-7501		ROD ASSEMBLY	COPPER
3	1	S-7508-7500		SHIELD ASSEMBLY	COPPER
2	1	S-7508-7499		FLANGE	ALUMINUM
1	1	S-7508-7498	-001	CASTING, CYCLOALIPHATIC RESIN	EC-APG-02

PARTS LIST

GENERAL TOLERANCES (UNLESS OTHERWISE SPECIFIED)

X.	±0.125
.X	±0.094
.XX	±0.063
.XXX	±0.010
ANGLES	±0.25°
RADIUS	0.031

REMOVE BURRS AND BREAK SHARP EDGES

DIMENSIONS ARE IN INCHES (UNLESS OTHERWISE SPECIFIED)

DRAWN BY: A.SAVARD	DATE: 2012/09/20
CHECK BY:	
PROJECT ENG.:	
PROJECT MANAGER:	

Electro Composites
solid HV bushings solution

TITLE: SDC® BUSHING 69kV, 3000A
MODEL: 350-030-T-760-00

FORMAT: A	CAGE CODE:	DRAWING NO.: S-7508-7498	REVISION: A
SCALE: 1:10	GENERATED BY: SolidWorks 2012	SHEET: 1 of 1	