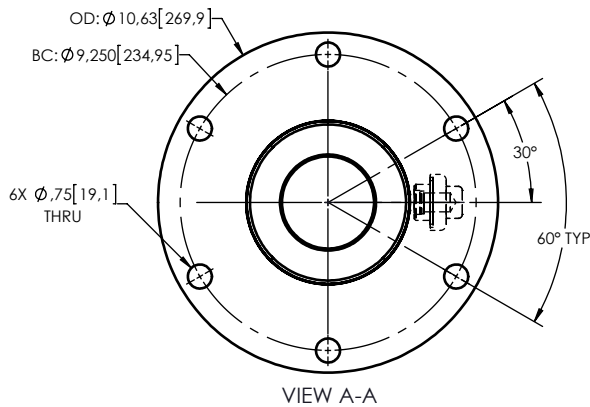
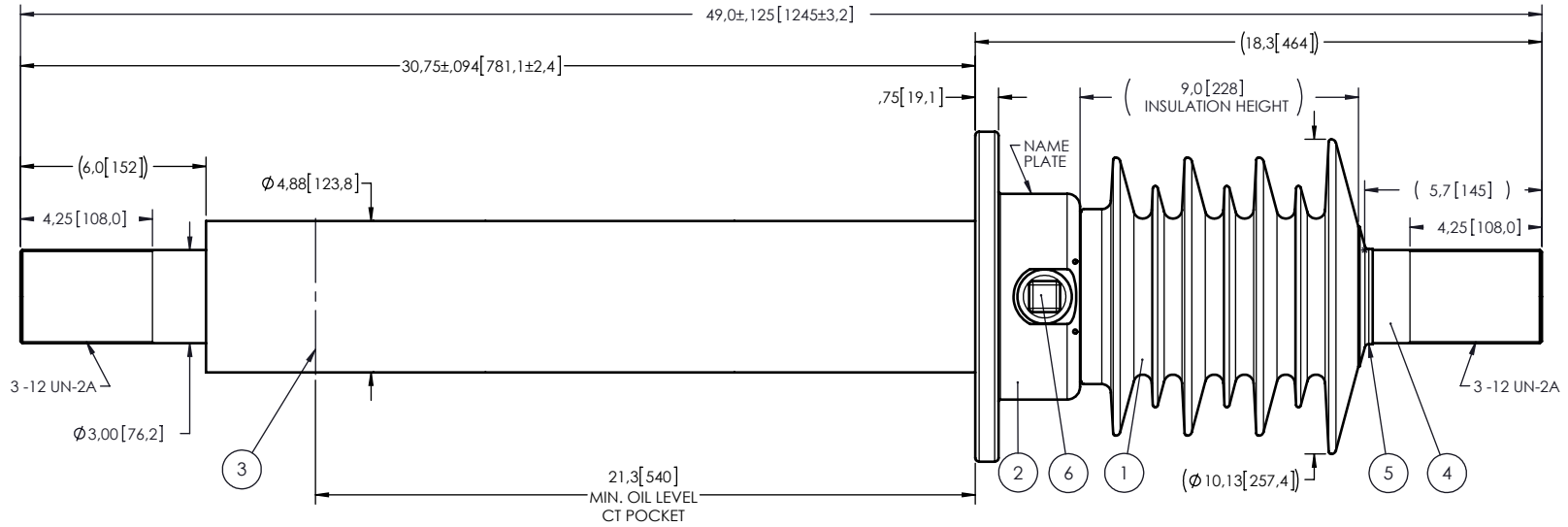


NOTES:

- 1 CREEPAGE DISTANCE: 27.3" / 693mm
- 2 ARC DISTANCE: 11.7" / 297mm
- 3 NOMINAL VOLTAGE: 15kV
- 4 NOMINAL CURRENT: 3000A
- 5 WITHSTAND VOLTAGE AT 60 sec.: 50kV
- 6 B.I.L. : 110kV
- 7 ROUTINE TEST ACCORDING TO: IEEE C57.19.01
- 8 MAX. TORQUE APPLIED ON FLANGE BOLTS: 70 lbf·ft / 94.9 N·m
- 9 WEIGHT: 158 lb / 71.7 Kg

REVISIONS

ZONE	REV.	DESCRIPTION	DRAWN BY	DATE	APPR.
------	------	-------------	----------	------	-------



ITEM NO.	QTY	DRAWING NO.	PART NO.	DESCRIPTION	NOTE / MAT'L
6	1	S-1001-2022		CAPACITANCE TAP ASSEMBLY	ALUMINUM
5	1	S-3529-2532		CAP	COPPER
4	1	S-7681-7540		ROD ASSEMBLY	COPPER
3	1	S-7681-7551		SHIELD ASSEMBLY	COPPER
2	1	S-4860-4560		FLANGE	ALUMINUM
1	1	S-7681-7539	-001	CASTING, CYCLOALIPHATIC RESIN	EC-APG-02

PARTS LIST

GENERAL TOLERANCES (UNLESS OTHERWISE SPECIFIED)

X.	±0.125
.X	±0.094
.XX	±0.063
.XXX	±0.031
ANGLES	±0.25°
RADIUS	±0.031

REMOVE BURRS AND
BREAK SHARP EDGES

DIMENSIONS ARE IN
INCHES
(UNLESS OTHERWISE SPECIFIED)

Electro Composites
solid HV bushings solution

TITLE:
SDC® BUSHING 15kV, 3000A
MODEL: 110-030-T-764-00

DRAWN BY: J. CLICHE	DATE: 2012/10/03	FORMAT: A	CAGE CODE	DRAWING NO. S-7681-7539	REVISION: NR
CHECK BY:		SCALE: 1:6	GENERATED BY: SolidWorks 2012	SHEET: 1 of 1	
PROJECT ENG.:					
PROJECT MANAGER:					

This drawing is the proprietary property of Electro Composites (2008) ULC, not part of the public domain, and is issued with the express understanding and agreement that it is not to be reproduced or copied in whole or in part or issued for furnishing information to others, or used directly or indirectly, in any way detrimental to the interest of Electro Composites (2008) ULC and is to be returned upon request by Electro Composites (2008) ULC. All Rights Reserved.