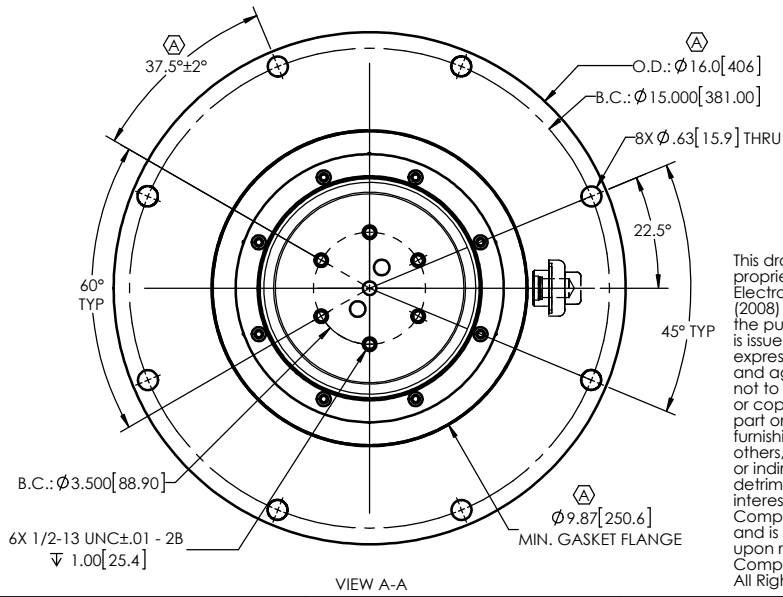
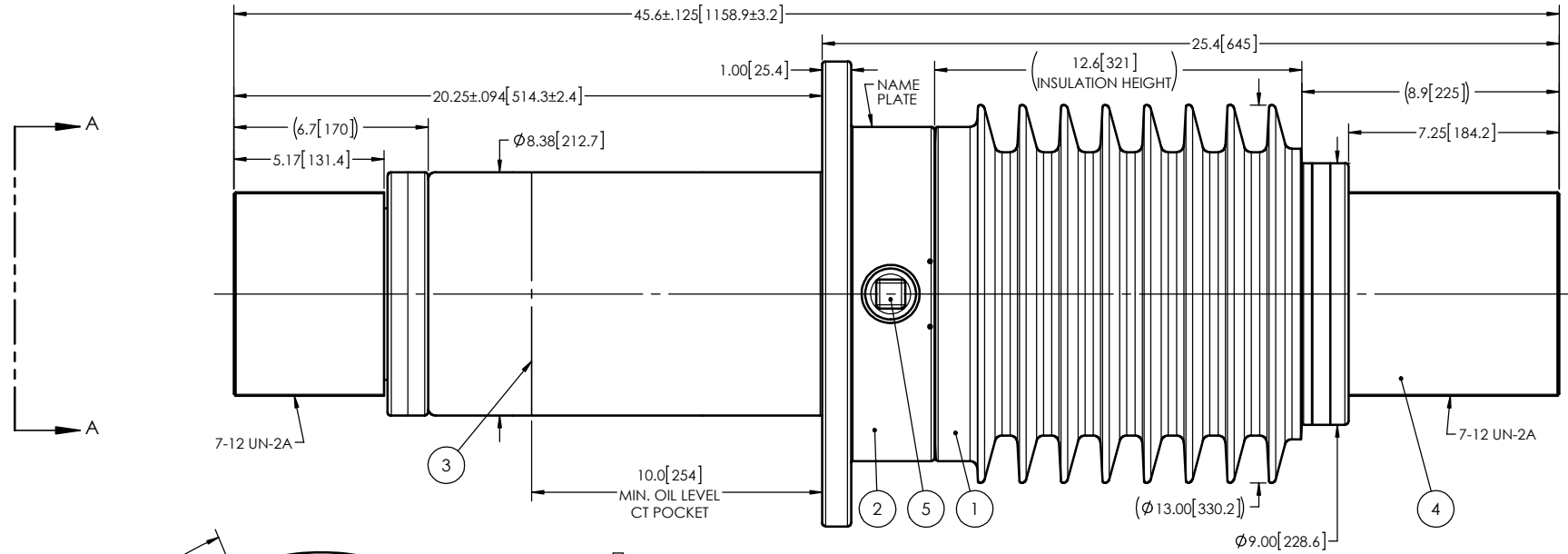


REVISIONS					
ZONE	REV.	DESCRIPTION	DRAWN BY	DATE	APPR.
A5		ADD THE "MINIMUM GASKET FLANGE" DIMENSION.	J. CLICHE	2012-10-22	
C6	A	ADD THE ANGLE 37.5°±2° BETWEEN THE FLANGE HOLE AND THE BOTTOM TERMINAL HOLE		2014-12-16	Y.V.
C4		ENLARGE THE TOLERANCE ON THE OUTSIDE DIAMETER OF THE FLANGE.			

- NOTES:
- 1 CREEPAGE DISTANCE: 33.7" / 856mm
 - 2 ARC DISTANCE: 14.8" / 376mm
 - 3 NOMINAL VOLTAGE: 25kV
 - 4 NOMINAL CURRENT: 7,000A
 - 5 VOLTAGE WITHSTAND, 60 sec.: 60kV
 - 6 BIL: 150kV
 - 7 ROUTINE TEST ACCORDING TO: IEEE C57.19.01
 - 8 MAX. TORQUE APPLIED ON FLANGE BOLTS: 70 lbf·ft / 94.9 N·m
 - 9 WEIGHT: 399 lb / 181.0 Kg



This drawing is the proprietary property of Electro Composites (2008) ULC, not part of the public domain, and is issued with the express understanding and agreement that it is not to be reproduced or copied in whole or in part or issued for furnishing information to others, or used directly or indirectly, in any way detrimental to the interest of Electro Composites (2008) ULC and is to be returned upon request by Electro Composites (2008) ULC. All Rights Reserved.

ITEM NO.	QTY	DRAWING NO.	PART NO.	DESCRIPTION	NOTE / MAT'L
5	1	S-1001-2022		CAPACITANCE TAP ASSEMBLY	ALUMINUM
4	1	S-8121-7572		ROD ASSEMBLY	COPPER
3	1	S-8121-7571		SHIELD ASSEMBLY	BRASS
2	1	S-8121-7570		FLANGE	ALUMINUM
1	1	S-8121-7569	-001	CASTING, CYCLOALIPHATIC RESIN	EC-APG-02

PARTS LIST

GENERAL TOLERANCES (UNLESS OTHERWISE SPECIFIED)		Electro Composites solid HV bushings solution	
X.	±0.125	TITLE: SDC®GSU BUSHING 25kV, 7,000A MODEL: 150-070-G-767-00	
.X	±0.094	FORMAT: A	CAGE CODE: S-8121-7569
.XX	±0.063	DRAWING NO.:	REVISION: A
.XXX	±0.031	PROJECTING: A	
.XXX	±0.031	PROJECT MANAGER:	
ANGLES	±0.25°	SCALE: 1:6	GENERATED BY: SolidWorks 2013
RADIUS	±0.031		SHEET: 1 of 1
REMOVE BURRS AND BREAK SHARP EDGES			
DIMENSIONS ARE IN INCHES (UNLESS OTHERWISE SPECIFIED)			