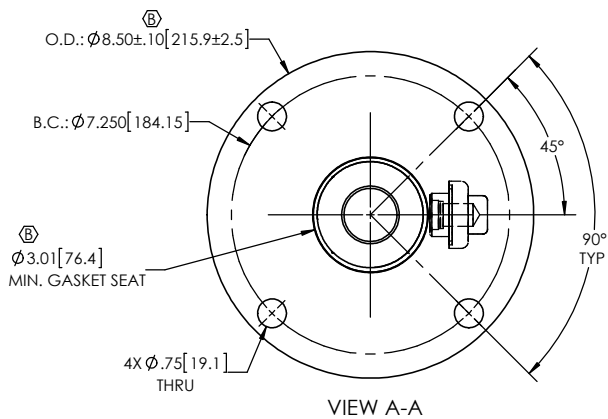
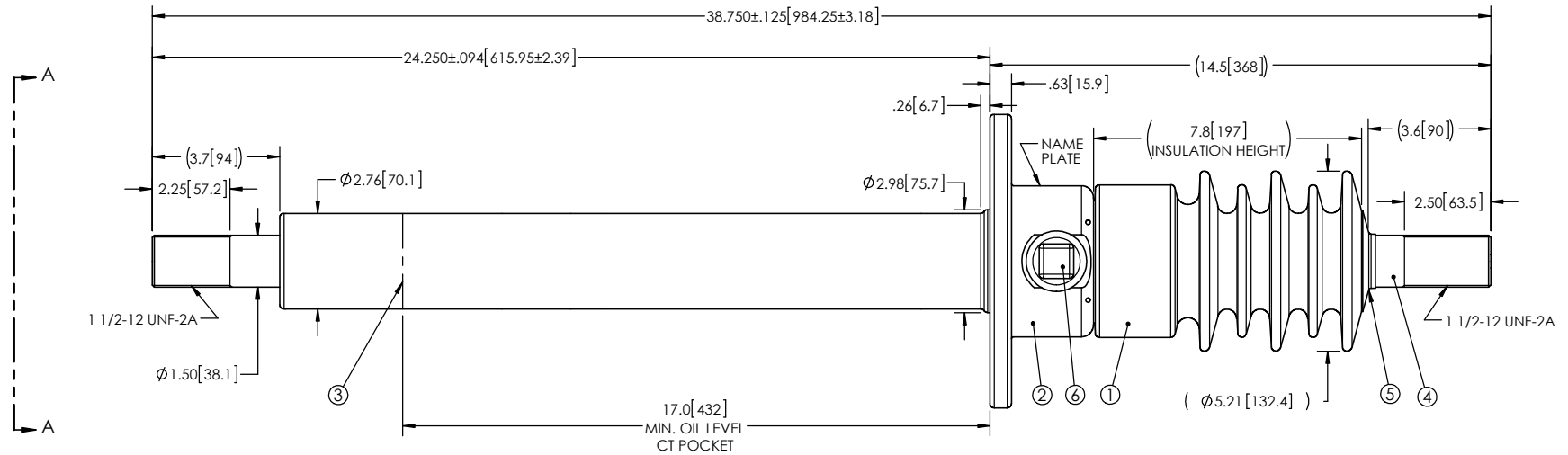


- NOTES:
- 1 CREEPAGE DISTANCE: 16.0" / 406mm
  - 2 ARC DISTANCE: 8.7" / 221mm
  - 3 NOMINAL VOLTAGE: 15kV
  - 4 NOMINAL CURRENT: 1200A
  - 5 VOLTAGE WITHSTAND, 60 sec.: 50kV
  - 6 BIL : 110kV
  - 7 ROUTINE TEST ACCORDING TO: CSA C88.1-96
  - 8 MAX. TORQUE APPLIED ON FLANGE BOLTS: 40 lbf·ft / 54.2 N·m
  - 9 WEIGHT: 39 lb / 17.7 Kg

REVISIONS					
ZONE	REV.	DESCRIPTION	DRAWN BY	DATE	APPR.
B4	A	ADD THE DRAWING No. FOR THE SHIELD ASSEMBLY INTO THE PARTS LIST	J. CLICHE	2013-01-22	Y.V.
C6 B6	B	INCREASE THE TOLERANCES ON THE FLANGE OUTSIDE DIAMETER. ADD THE MINIMUM GASKET SEAT DIMENSION.	J. CLICHE	2017-06-02	Y.V.



This drawing is the proprietary property of Electro Composites (2008) ULC, not part of the public domain, and is issued with the express understanding and agreement that it is not to be reproduced or copied in whole or in part or issued for furnishing information to others, or used directly or indirectly, in any way detrimental to the interest of Electro Composites (2008) ULC and is to be returned upon request by Electro Composites (2008) ULC. All Rights Reserved.

ITEM NO.	QTY	DRAWING NO.	PART NO.	DESCRIPTION	NOTE / MAT'L
6	1	S-1001-2022		CAPACITANCE TAP ASSEMBLY	ALUMINUM
5	1	S-1001-0007		CAP	COPPER
4	1	S-8151-7603		ROD ASSEMBLY	COPPER
3	1	S-8151-7602		SHIELD ASSEMBLY	COPPER
2	1	S-8151-7601		FLANGE	ALUMINUM
1	1	S-8151-7600	-001	CASTING, CYLOALIPHATIC RESIN	EC-APG-02

PARTS LIST					
GENERAL TOLERANCES (UNLESS OTHERWISE SPECIFIED)			<b>Electro Composites™</b> <b>solid HV bushings solution</b>		
X.	±0.125	<b>TITLE:</b> <b>SDC® BUSHING 15kV, 1200A</b> <b>MODEL: 110-012-T-773-00</b>			
.X	±0.094				
.XX	±0.063				
.XXX	±0.031				
ANGLES	±0.25°				
RADIUS	±0.031				
REMOVE BURRS AND BREAK SHARP EDGES			<b>DRAWN BY:</b> J. CLICHE <b>DATE:</b> 2012/10/30		
DIMENSIONS ARE IN INCHES (UNLESS OTHERWISE SPECIFIED)			<b>PROJECTING:</b> _____		
			<b>PROJECT MANAGER:</b> _____		
SCALE: 1:5				<b>GENERATED BY:</b> SolidWorks 2013 <b>SHEET:</b> 1 of 1	