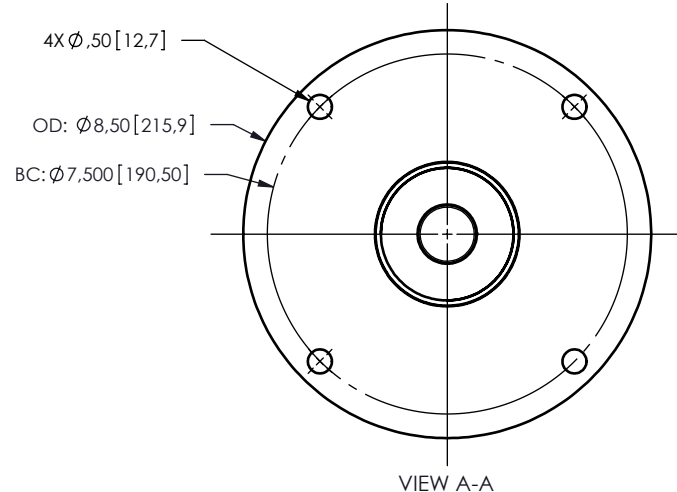
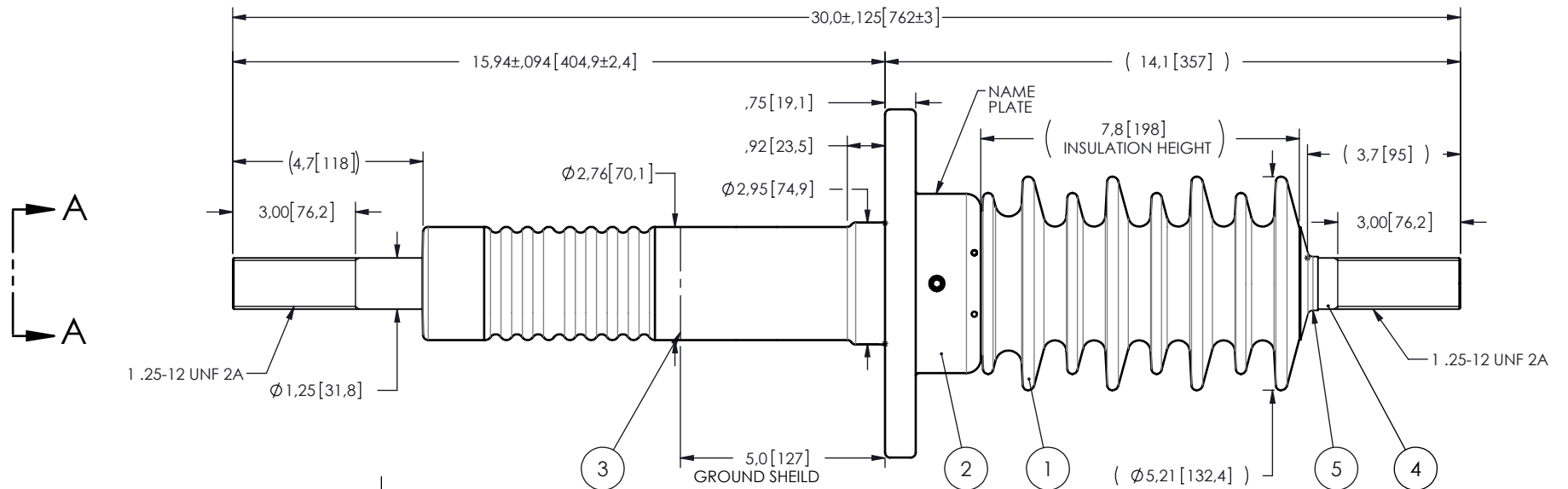


NOTES:

- 1 CREEPAGE DISTANCE OUTSIDE: 18.9" / 408mm
- CREEPAGE DISTANCE INSIDE: 6.6" / 169.2mm
- 2 ARC DISTANCE OUTSIDE: 8.9" / 226mm
- ARC DISTANCE INSIDE: 6.0" / 152mm
- 3 NOMINAL VOLTAGE: 15kV
- 4 NOMINAL CURRENT: 1200A
- 5 WITHSTAND VOLTAGE AT 60 sec.: 50kV
- 6 B.I.L. : 110kV
- 7 APPLICATION STANDARD: IEEE C57.19.01
- 8 MAX. TORQUE APPLIED ON FLANGE BOLTS: 40 lbf x ft
- 9 WEIGHT: 26. lb / 11.9 Kg



ITEM NO.	QTY	DRAWING NO.	PART NO.	DESCRIPTION	NOTE / MAT'L
5	1	S-1016-0008		CAP	COPPER
4	1	S-8165-7616		ROD ASSEMBLY	COPPER
3	1	S-8165-7634		SHIELD ASSEMBLY	COPPER
2	1	S-8165-7614		FLANGE	ALUMINUM
1	1	S-8165-7613	-001	CASTING, CYCLOALIPHATIC RESIN	EC-APG-02

PARTS LIST					
GENERAL TOLERANCES (UNLESS OTHERWISE SPECIFIED)		REPLACE:		ElectroComposites solid HV bushings solution TITLE: SDC® BUSHING 15kV, 1200A MODEL: 110-012-W-774-00	
X.	±0.125	DRAWN BY: J.N.PILOTTE			
.X	±0.094	DATE: 2012/11/05			
.XX	±0.063	CHECK BY:			
.XXX	±0.010	PROJECT ENG.:			
ANGLES	±0.1°	PROJECT MGR.:			
RADIUS	±0.031	SCALE: 1:4			
REMOVE BURRS AND BREAK SHARP EDGES		CAGE CODE: A		DRAWING NO.: S-8165-7613	
DIMENSIONS ARE IN INCHES (UNLESS OTHERWISE SPECIFIED)		GENERATED BY: SolidWorks 2012		REVISION: NR	
		SHEET: 1 of 1			

This drawing is the proprietary property of Electro Composites (2008) ULC, not part of the public domain, and is issued with the express understanding and agreement that it is not to be reproduced or copied in whole or in part or issued for furnishing information to others, or used directly or indirectly, in any way detrimental to the interest of Electro Composites (2008) ULC and is to be returned upon request by Electro Composites (2008) ULC. All Rights Reserved.