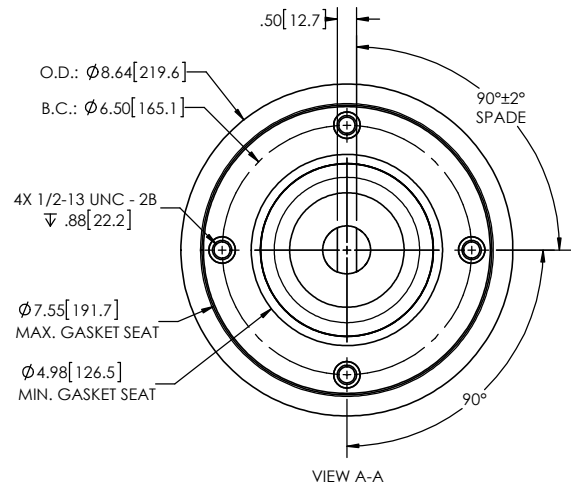
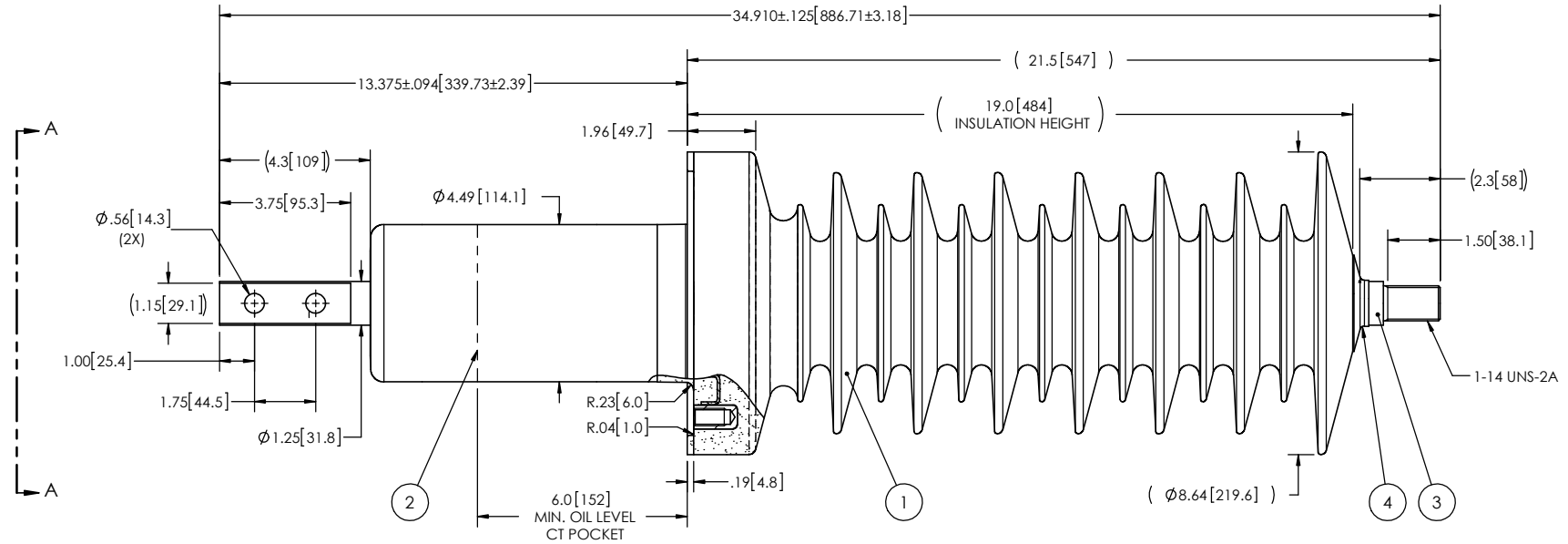


NOTES:

- 1 CREEPAGE DISTANCE: 54.1" / 1374mm
- 2 ARC DISTANCE: 21.3" / 541mm
- 3 NOMINAL VOLTAGE: 46kV
- 4 NOMINAL CURRENT: 1200A
- 5 VOLTAGE WITHSTAND AT 60 sec.: 105kV
- 6 BIL: 250kV
- 7 ROUTINE TEST ACCORDING TO: IEEE C57.19.01
- 8 MAX. TORQUE APPLIED ON FLANGE BOLTS 30 lbf·ft / 40.7 N·m
- 9 WEIGHT: 50 lb / 22.7 Kg
- 10 PD < 10pC @ 65kV
- 11 BUSHING FOR MVCT APPLICATION.

REVISIONS					
ZONE	REV.	DESCRIPTION	DRAWN BY	DATE	APPR.



This drawing is the proprietary property of Electro Composites (2008) ULC, not part of the public domain, and is issued with the express understanding and agreement that it is not to be reproduced or copied in whole or in part or issued for furnishing information to others, or used directly or indirectly, in any way detrimental to the interest of Electro Composites (2008) ULC and is to be returned upon request by Electro Composites (2008) ULC. All Rights Reserved.

ITEM NO.	QTY	DRAWING NO.	PART NO.	DESCRIPTION	NOTE / MAT'L
4	1	S-1016-0008		CAP	COPPER
3	1	S-2502-9275		ROD ASSEMBLY	COPPER
2	1	S-2502-9274		SHIELD ASSEMBLY	COPPER
1	1	S-2502-9273	-001	CASTING, CYCLOALIPHATIC RESIN	EC-APG-02

GENERAL TOLERANCES (UNLESS OTHERWISE SPECIFIED)

X. ±0.125  
 .X ±0.094  
 .XX ±0.063  
 .XXX ±0.031  
 ANGLES ±0.25°  
 RADIUS ±0.031

REMOVE BURRS AND BREAK SHARP EDGES

DIMENSIONS ARE IN INCHES (UNLESS OTHERWISE SPECIFIED)

**Electro Composites**  
**solid HV bushings solution**

TITLE: SDC® BUSHING 46KV, 1200A  
 MODEL: 250-012-T-780-01

DRAWN BY: J. CLICHE	DATE: 2017/02/17	FORMAT: A	CAGE CODE	DRAWING NO.: S-2502-9273	REVISION: NR
CHECK BY:		PROJECTING:		SCALE: 1:5	GENERATED BY: SolidWorks 2013
PROJECT MANAGER:					SHEET: 1 of 1