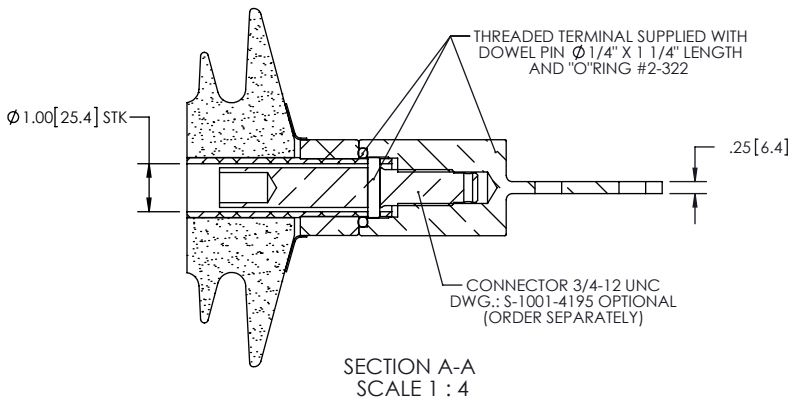
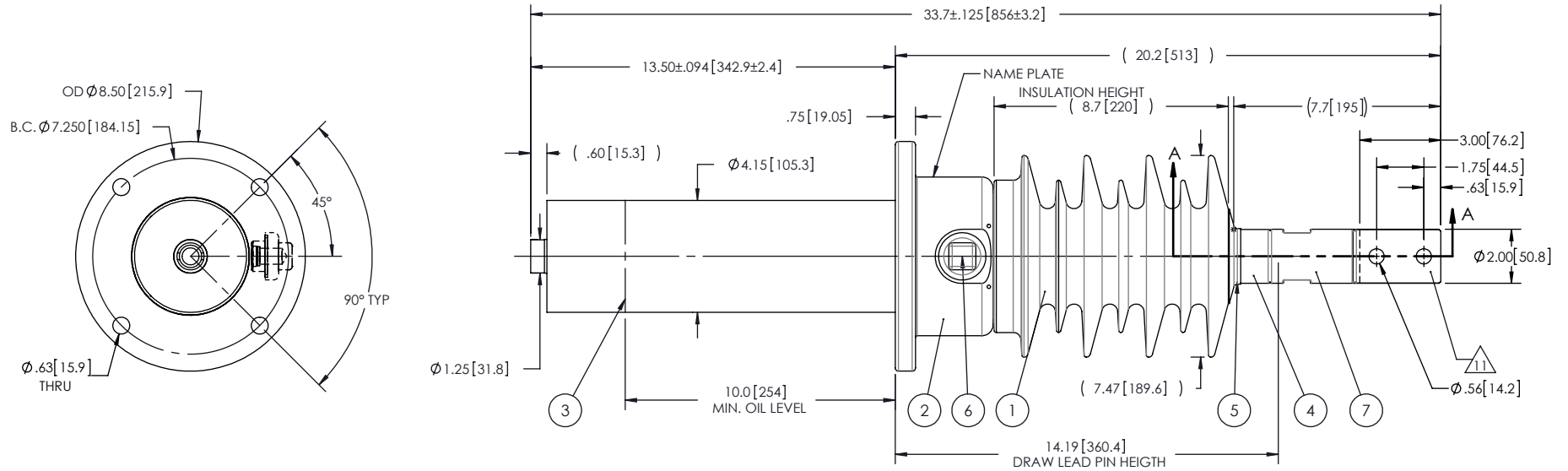


- NOTES:
- 1 CREEPAGE DISTANCE: 25.1" / 638mm
 - 2 ARC DISTANCE: 10.7" / 270mm
 - 3 NOMINAL VOLTAGE: 15kV
 - 4 NOMINAL CURRENT: 400A
 - 5 WITHSTAND VOLTAGE AT 60 sec.: 50kV
 - 6 B.I.L. : 110kV
 - 7 APPLICATION STANDARD: IEEE C57.19.01
 - 8 MAX. TORQUE APPLIED ON FLANGE BOLTS: 40 lbf x ft / 54.2k.N
 - 9 WEIGHT: 39.7 lbs / 18 Kg

10 BLADE ORIENTATION WILL BE RANDOM

REVISIONS					
ZONE	REV.	DESCRIPTION	DRAWN BY	DATE	APPR.



ITEM NO.	QTY	DRAWING NO.	PART NO.	DESCRIPTION	NOTE / MAT'L
7	1	S-6919-6634-0		THREADED TERMINAL KIT	COPPER
6	1	S-1001-2022		CAPACITANCE TAP ASSEMBLY	ALUMINUM
5	1	S-1344-0162-1		CAP	ALUMINUM
4	1	S-8826-8095		TUBE ASSEMBLY	ALUMINIUM
3	1	S-6841-6440		SHIELD ASSEMBLY	ALUMINIUM
2	1	S-6841-6439		FLANGE	ALUMINIUM
1	1	S-8826-8094	-001	CASTING, CYCLOALIPHATIC RESIN	EC-APG-02

PARTS LIST					
GENERAL TOLERANCES (UNLESS OTHERWISE SPECIFIED)		REPLACE:		Electro Composites solid HV bushings solution	
X.	± 0.125	DRAWN BY: J.N.PILOTTE DATE: 2013/08/25			
.X	± 0.094	CHECK BY:		TITLE: SDC® BUSHING 15kV, 400A MODEL: 110-004-T-791-01	
.XX	± 0.063	PROJECT ENG.:		FORMAT: A	CAGE CODE
.XXX	± 0.010	PROJECT MGR.:		DRAWING NO. S-8826-8094	
ANGLES	$\pm 0.25^\circ$			REVISION: NR	
RADIUS	± 0.031			SCALE: 1:6	GENERATED BY: SolidWorks 2012
REMOVE BURRS AND BREAK SHARP EDGES				SHEET: 1 of 1	
DIMENSIONS ARE IN INCHES (UNLESS OTHERWISE SPECIFIED)					

This drawing is the proprietary property of Electro Composites (2008) ULC, not part of the public domain, and is issued with the express understanding and agreement that it is not to be reproduced or copied in whole or in part or issued for furnishing information to others, or used directly or indirectly, in any way detrimental to the interest of Electro Composites (2008) ULC and is to be returned upon request by Electro Composites (2008) ULC. All Rights Reserved.