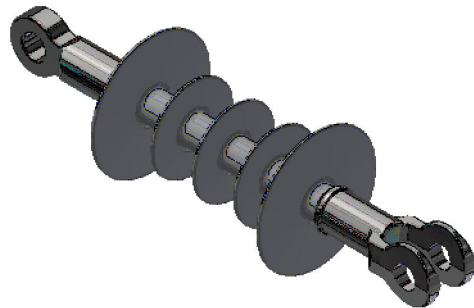
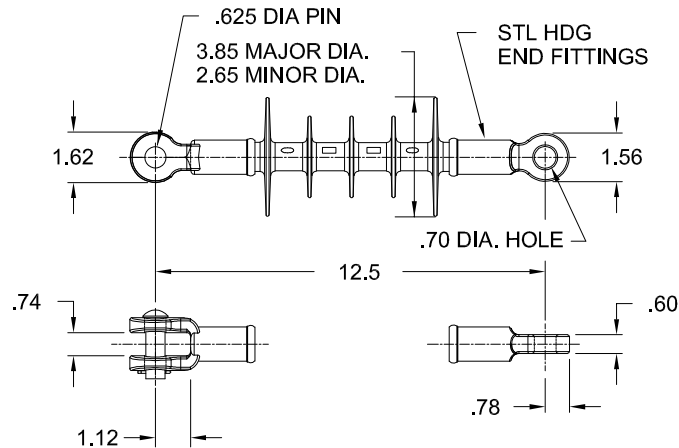


# POLYMER DEADEND INSULATOR

CAT NO.: 801015-0215		
REV:	03	Jan.08, 2020



HUBBELL POWER SYSTEMS, INC.  
 CUSTOMER SERVICE: (573) 682-5521  
 www.hubbellpowersystems.com



MECHANICAL VALUES	LBS	kN
TENSILE PROOF TEST	10000	45
ULTIMATE TENSION STRENGTH	15000	70
ELECTRICAL VALUES	KV	KV
60 HZ DRY FLASHOVER (DRY WITHSTAND)	100	(90)
60 HZ WET FLASHOVER (WET WITHSTAND)	80	(70)
CRITICAL IMPULSE FLASHOVER + (WITHSTAND)	150	-
CRITICAL IMPULSE FLASHOVER - (WITHSTAND)	170	-
MAX RIV AT 1000 KHZ	<10 μV	
RIV TEST VOLTAGE	15 kV	
POWER ARC	150 kA CYCLES	

DIMENSIONAL VALUES	IN.	MM
SECTION LENGTH	12.5	317.5
MAJOR SHED DIAMETER	3.85	97.79
MINOR SHED DIAMETER	2.65	67.31
SHEATH THICKNESS	≥0.12	≥3
LEAKAGE DISTANCE	16.00	406.4
DRY ARC DISTANCE	8.10	215.0

### OTHER DETAILS

INSULATOR CLASS	DS-15
NO OF WEATHERSHED:	5
WEIGHT:	2.4 LBS
COUNTRY OF ORIGIN:	USA

### NOTES:

1. SILICON RUBBER SHEATH AND SHEDS. HIGH PRESSURE WASHABLE SILICON RUBBER HOUSING
2. ELECTRICAL CHARACTERISTICS IN ACCORDANCE WITH ANSI C29.13, CSA C411.5-10 AND IEC 61109

CONFIDENTIAL: THIS DRAWING AND ITS CONTENTS ARE CONFIDENTIAL AND THE EXCLUSIVE PROPERTY OF HUBBELL POWER SYSTEMS. NO PUBLICATION, DISTRIBUTION OR COPIES MAY BE MADE WITHOUT THE WRITTEN CONSENT OF HUBBELL POWER SYSTEMS. HUBBELL POWER SYSTEMS UNPUBLISHED ALL RIGHTS RESERVED UNDER THE COPYRIGHT LAWS