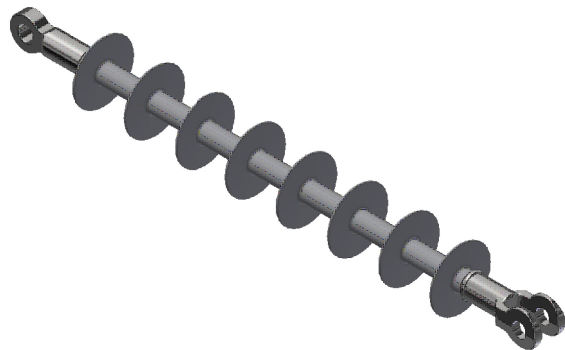
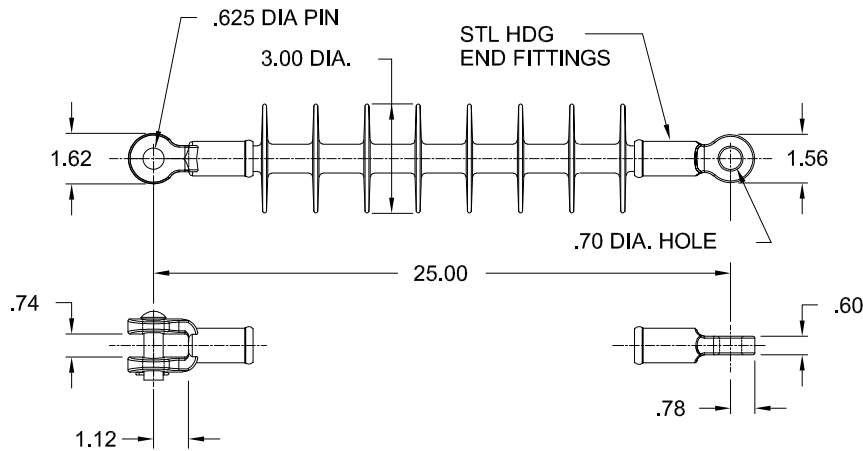


POLYMER DEADEND INSULATOR

CAT NO.: 801035-0215		
DRAWING NO.: 024705-00		
REV:	04	Jan.08, 2020



HUBBELL POWER SYSTEMS, INC.
 CUSTOMER SERVICE: (573) 682-5521
 www.hubbellpowersystems.com



MECHANICAL VALUES	LBS	kN
TENSILE PROOF TEST	10000	45
ULTIMATE TENSION STRENGTH	15000	70
ELECTRICAL VALUES	KV	KV
60 HZ DRY FLASHOVER (DRY WITHSTAND)	200	(170)
60 HZ WET FLASHOVER (WET WITHSTAND)	160	(130)
CRITICAL IMPULSE FLASHOVER + (WITHSTAND)	325	-
CRITICAL IMPULSE FLASHOVER - (WITHSTAND)	360	-
MAX RIV AT 1000 KHZ	<10 μV	
RIV TEST VOLTAGE	30 kV	
POWER ARC	150 kA CYCLES	
DIMENSIONAL VALUES	IN.	MM
SECTION LENGTH	25.0	635.0
SHED DIAMETER	3.0	76.2
SHEATH THICKNESS	≥0.12	≥3
LEAKAGE DISTANCE	33.0	838.2
DRY ARC DISTANCE	20.0	508.0

OTHER DETAILS

INSULATOR CLASS	N/A
NO OF WEATHERSHED:	8
WEIGHT:	3.3 LBS
COUNTRY OF ORIGIN:	USA

NOTES:

1. SILICON RUBBER SHEATH AND SHEDS. HIGH PRESSURE WASHABLE SILICON RUBBER HOUSING
2. ELECTRICAL CHARACTERISTICS IN ACCORDANCE WITH ANSI C29.13, CSA C411.5-10 AND IEC 61109