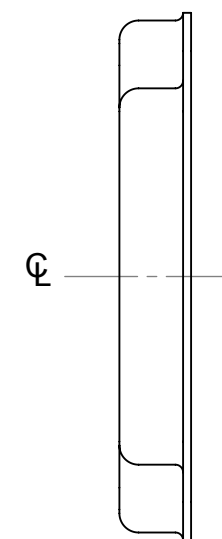
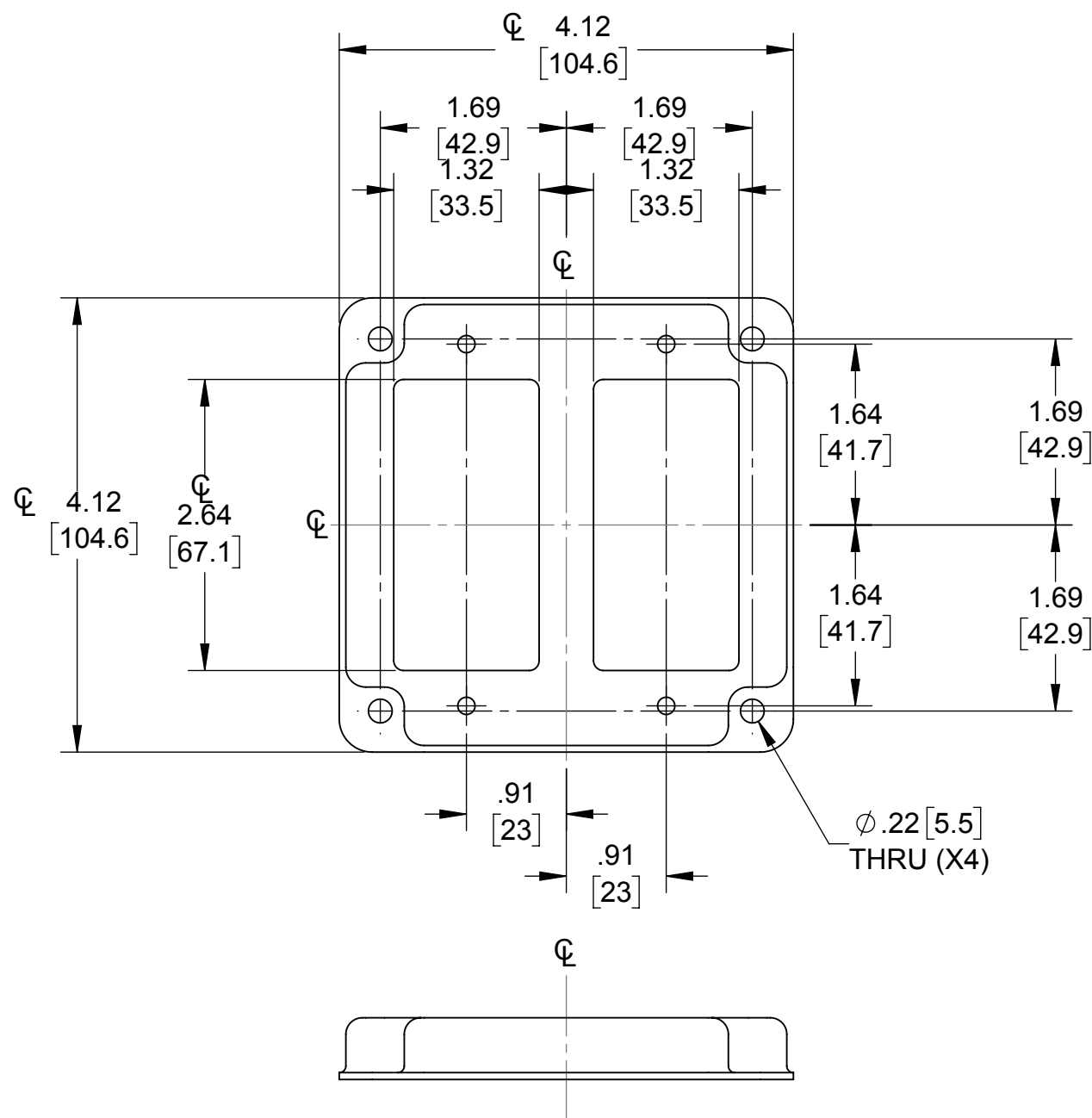
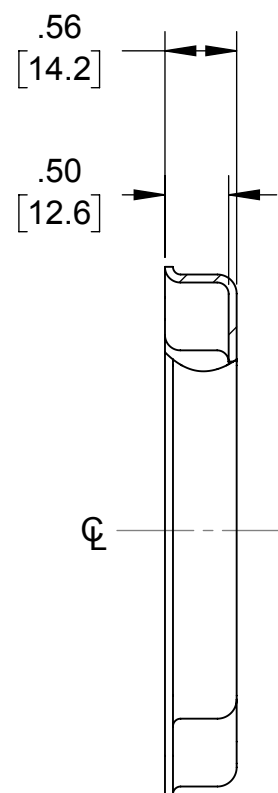
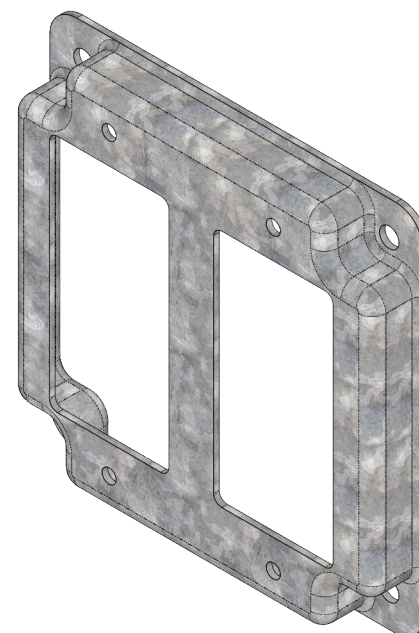
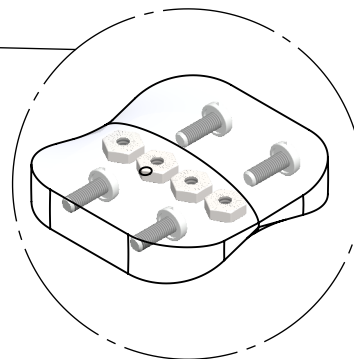


#6-32 X 1 1/32" BINDING HEAD
MACHINE SCREWS (QTY.2)

#6-32 HEX NUTS (QTY. 2)



LIST OF PARTS		
DESCRIPTION	MATERIAL	FINISH
COVER	STEEL	GALVANIZED
SCREWS	STEEL	GALVANIZED
NUTS	STEEL	GALVANIZED

SYM.	REVISION DESCRIPTION	APP	DATE
	INITIAL RELEASE	RMV	03-31-17

THE DESIGN AND DIMENSIONS OF THE PRODUCT SHOWN ON THIS DRAWING ARE SUBJECT TO CHANGE WITHOUT NOTICE

TITLE:
**4" SQ. CRUSHED CORNER COVER,
(2) GFCI**

<small>TOLERANCE UNLESS OTHERWISE SPECIFIED</small> .XX DECIMAL ±.015 .XXX DECIMAL ±.005 ANGLE ±2°	RACO South Bend, Indiana		SIZE: B
	DRAWN BY:	RMV	SCALE: 1:1.5
	APP. BY:	RMV	
	DATE:	03-31-17	

- NOTES:
 1. ALL DIMENSIONS ARE IN INCHES AND [MILLIMETERS]
 2. BOX VOLUME: 6.5 IN³ [107] CM³
 3. UL LISTED