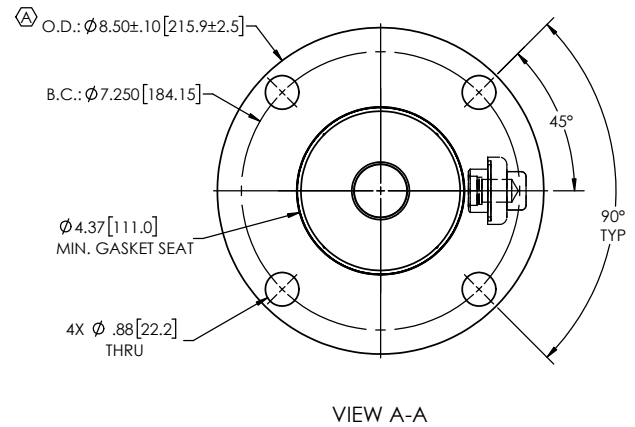
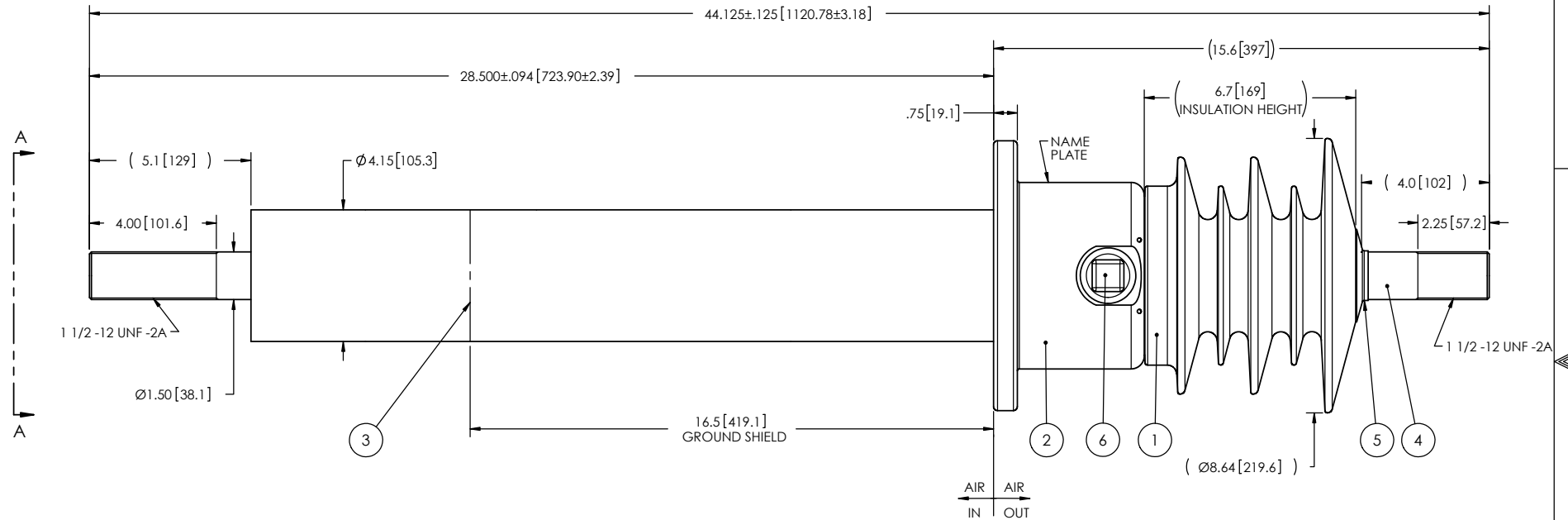


NOTES:

- 1 CREEPAGE DISTANCE: OUT: 19.8" / 503mm IN: 7.7" / 196mm
- 2 ARC DISTANCE: OUT: 9.2" / 234mm IN: 7.7" / 196mm
- 3 NOMINAL VOLTAGE: 15kV
- 4 NOMINAL CURRENT: 1200A
- 5 VOLTAGE WITHSTAND, 60 sec.: 50kV
- 6 BIL: 110kV
- 7 ROUTINE TEST ACCORDING TO: CSA C88.1-96
- 8 MAX. TORQUE APPLIED ON FLANGE BOLTS: 40 lb·ft / 54.2 N·m
- 9 WEIGHT: 64 lb / 29 kg

REVISIONS					
ZONE	REV.	DESCRIPTION	DRAWN BY	DATE	APPR.
B4 C6	A	FLANGE S-7208-6794 CHANGED BY S-5256-4789 INCREASE THE TOLERANCES ON THE FLANGE OUTSIDE DIAMETER.	M. FORGET	2023-04-20	Y.V.



ITEM NO.	QTY	DRAWING NO.	PART NO.	DESCRIPTION	NOTE / MAT'L
6	1	S-1001-2022		CAPACITANCE TAP ASSEMBLY	ALUMINUM
5	1	S-1001-0007		CAP	COPPER
4	1	S-1012-8756		ROD ASSEMBLY	COPPER
3	1	S-1012-8755		SHIELD ASSEMBLY	COPPER
2	1	S-5256-4789		FLANGE	ALUMINUM
1	1	S-1012-8754	-001	CASTING, CYCLOALIPHATIC RESIN	EC-APG-02

PARTS LIST					
GENERAL TOLERANCES (UNLESS OTHERWISE SPECIFIED) X. ±0.125 .X ±0.094 .XX ±0.063 .XXX ±0.031 ANGLES ±0.25° RADIUS ±0.031			<b>Electro Composites™</b> <b>solid HV bushings solution</b>		
REMOVE BURRS AND BREAK SHARP EDGES  DIMENSIONS ARE IN INCHES (UNLESS OTHERWISE SPECIFIED)			TITLE: SDC® BUSHING 15kV, 1200A MODEL: 110-012-W-812-01		
DRAWN BY: J. CLICHE		DATE: 2015/03/27		FORMAT: A	REVISION: A
PROJECT NO.:		DRAWING NO. S-1012-8754		SCALE: 1:5	GENERATED BY: SolidWorks 2022
PROJECT MANAGER:		SHEET: 1 of 1			

This drawing is the proprietary property of Electro Composites inc., not part of the public domain, and is issued with the express understanding and agreement that it is not to be reproduced or copied in whole or in part or issued for furnishing information to others, or used directly or indirectly, in any way detrimental to the interest of Electro Composites inc. and is to be returned upon request by Electro Composites inc. All Rights Reserved.