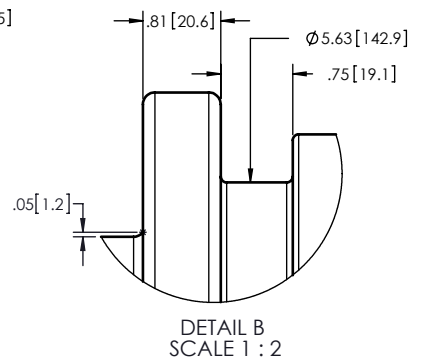
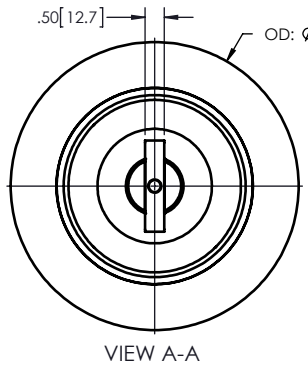
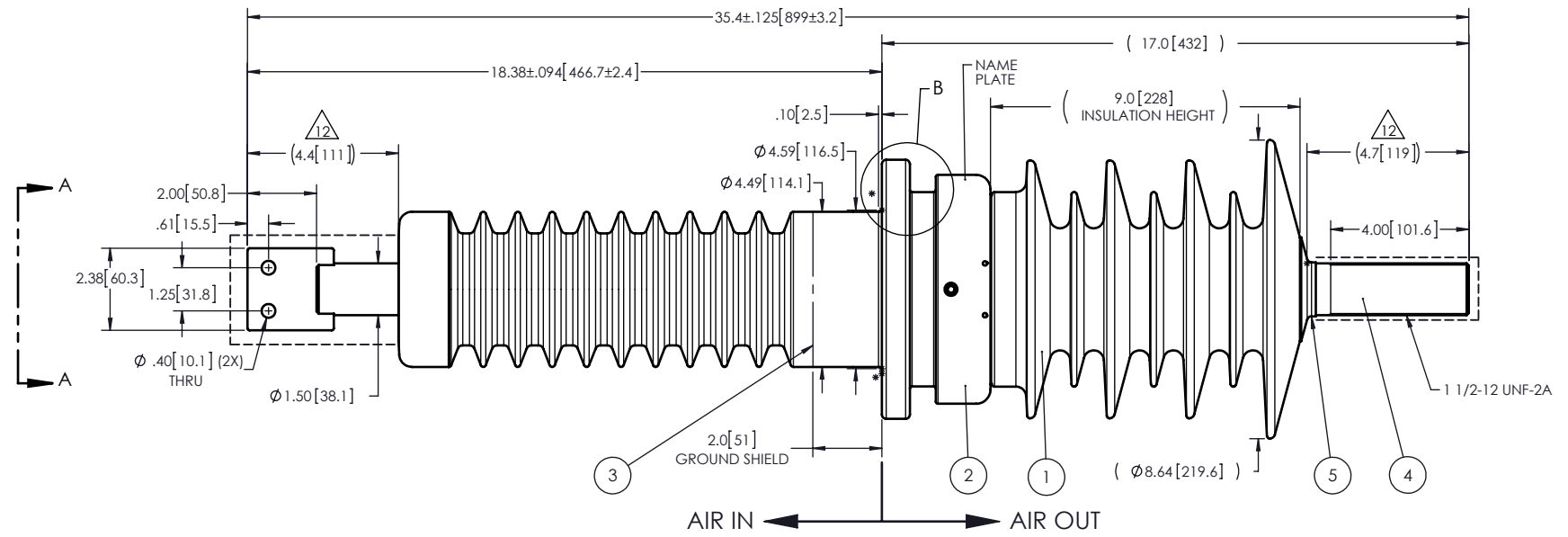


- NOTES:
- 1 CREEPAGE DISTANCE OUTSIDE: 26.5" / 673mm
 - 2 ARC DISTANCE OUTSIDE: 11.5" / 292mm
 - 3 CREEPAGE DISTANCE INSIDE: 21.3" / 541mm
 - 4 ARC DISTANCE INSIDE: 13.3" / 339mm
 - 5 NOMINAL VOLTAGE: 25kV
 - 6 NOMINAL CURRENT: 600A
 - 7 WITHSTAND VOLTAGE AT 60 sec.: 60kV
 - 8 BIL: 150kV
 - 9 ROUTINE TEST ACCORDING TO: IEEE C57.19.01
 - 10 MAX. TORQUE APPLIED ON FLANGE BOLTS: 40 lb·ft / 54.2 N·m
 - 11 WEIGHT: 49 lb / 22.2 Kg
 - 12 TIN PLATED, AS PER ASTM B545, FROM .0003" TO .0005" THICKNESS

REVISIONS					
ZONE	REV.	DESCRIPTION	DRAWN BY	DATE	APPR.



ITEM NO.	QTY	DRAWING NO.	PART NO.	DESCRIPTION	NOTE / MAT'L
5	1	S-1001-0007		CAP	COPPER
4	1	S-8783-8009		ROD ASSEMBLY	COPPER
3	1	S-7144-7287		SHIELD ASSEMBLY	COPPER
2	1	S-7144-7175		FLANGE	ALUMINUM
1	1	S-8783-8008	-001	CASTING, CYCLOALIPHATIC RESIN	EC-APG-02

PARTS LIST					
GENERAL TOLERANCES (UNLESS OTHERWISE SPECIFIED)		REPLACE:		Electro Composites™ solid HV bushings solution TITLE: SDC® BUSHING 25kV, 600A MODEL 150-006-W-825-00	
X.	±0.125	DRAWN BY: J.N.PILOTTE			
.X	±0.094	DATE: 2013/08/06		FORMAT: A	CAGE CODE
.XX	±0.063	CHECK BY:		DRAWING NO. S-8783-8008	
.XXX	±0.010	PROJECT ENG.:		REVISION: NR	
ANGLES	±0.25°	PROJECT MANAGER:		SCALE: 1:5	GENERATED BY: SolidWorks 2012
RADIUS	±0.031			SHEET: 1 of 1	
REMOVE BURRS AND BREAK SHARP EDGES					
DIMENSIONS ARE IN INCHES (UNLESS OTHERWISE SPECIFIED)					

This drawing is the proprietary property of Electro Composites (2008) ULC, not part of the public domain, and is issued with the express understanding and agreement that it is not to be reproduced or copied in whole or in part or issued for furnishing information to others, or used directly or indirectly, in any way detrimental to the interest of Electro Composites (2008) ULC and is to be returned upon request by Electro Composites (2008) ULC. All Rights Reserved.