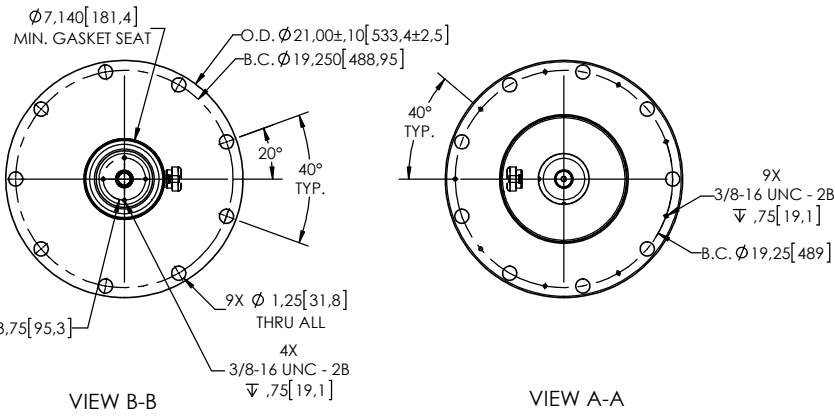
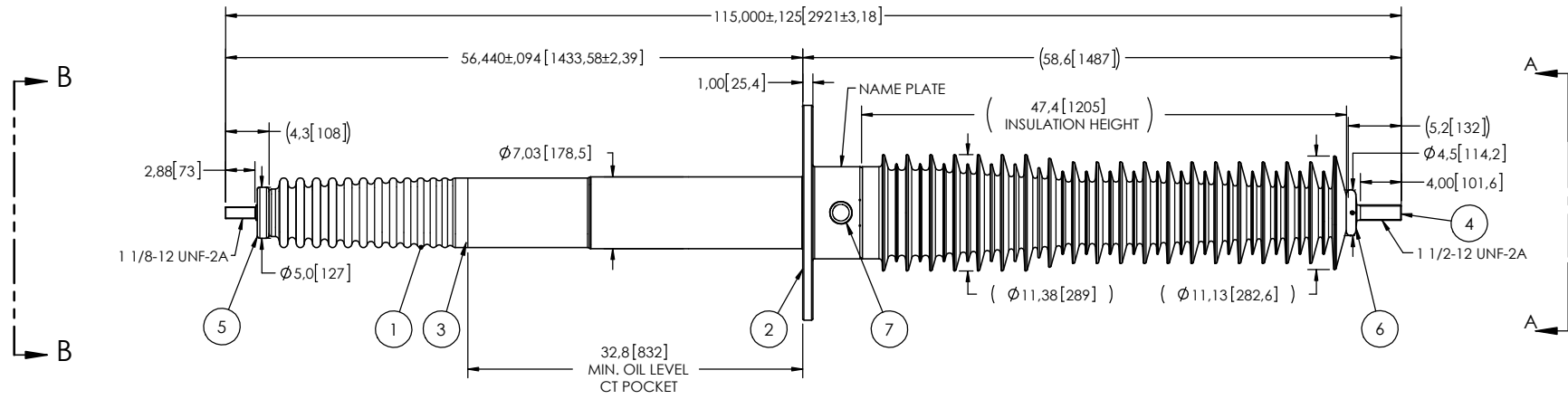


- NOTES:
- 1 CREEPAGE DISTANCE: 148.5" / 3772 mm
  - 2 ARC DISTANCE: 50.7" / 1288 mm
  - 3 NOMINAL VOLTAGE: 115kV
  - 4 NOMINAL CURRENT: 1200A
  - 5 WITHSTAND VOLTAGE AT 60 sec.: 260kV
  - 6 B.I.L. : 550kV
  - 7 ROUTINE TEST ACCORDING TO: IEEE C57.19.01
  - 8 MAX. TORQUE APPLIED ON FLANGE BOLTS: 70 lbf x ft (94.9 N.m)
  - 9 WEIGHT: 389 lbs / 176.4 Kg

REVISIONS					
ZONE	REV.	DESCRIPTION	DRAWN BY	DATE	APPR.



ITEM NO.	QTY	DRAWING NO.	PART NO.	DESCRIPTION	NOTE / MAT'L
7	1	S-2878-2606		CAPACITANCE TAP ASSEMBLY	ALUMINUM
6	1	S-2878-4854		CORONA RING TOP	ALUMINUM
5	1	S-3876-8840		CORONA RING BOTTOM	ALUMINUM
4	1	S-3876-8839		ROD ASSEMBLY	COPPER
3	1	S-3876-8838		SHIELD ASSEMBLY	BRASS
2	1	S-3876-8837		FLANGE	ALUMINUM
1	1	S-3876-8836	-001	CASTING, CYCLOALIPHATIC RESIN	EC-APG-02

PARTS LIST					
GENERAL TOLERANCES (UNLESS OTHERWISE SPECIFIED)			<p align="center"><b>Electro Composites™</b> solid HV bushings solution</p> <p>TITLE: SDC® BUSHING 115kV, 1200A MODEL: 550-012-T-828-01</p>		
X.	±0.125	DRAWN BY: A.SAVARD    DATE: 2015/06/01 CHECK BY: PROJECT ENG.: PROJECT MANAGER:			
.X	±0.094				
.XX	±0.063				
.XXX	±0.031				
ANGLES	±0.25°	REMOVE BURRS AND BREAK SHARP EDGES  DIMENSIONS ARE IN INCHES (UNLESS OTHERWISE SPECIFIED)	SCALE: 1:17	CAGE CODE: DRAWING NO.: S-3876-8836	REVISION: NR
RADIUS	±0.031		SHEET: 1 of 1		

This drawing is the proprietary property of Electro Composites (2008) ULC, not part of the public domain, and is issued with the express understanding and agreement that it is not to be reproduced or copied in whole or in part or issued for furnishing information to others, or used directly or indirectly, in any way detrimental to the interest of Electro Composites (2008) ULC and is to be returned upon request by Electro Composites (2008) ULC. All Rights Reserved.