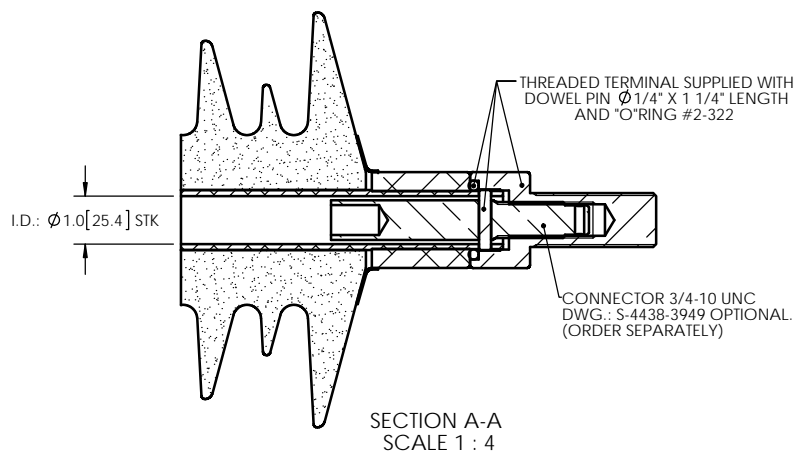
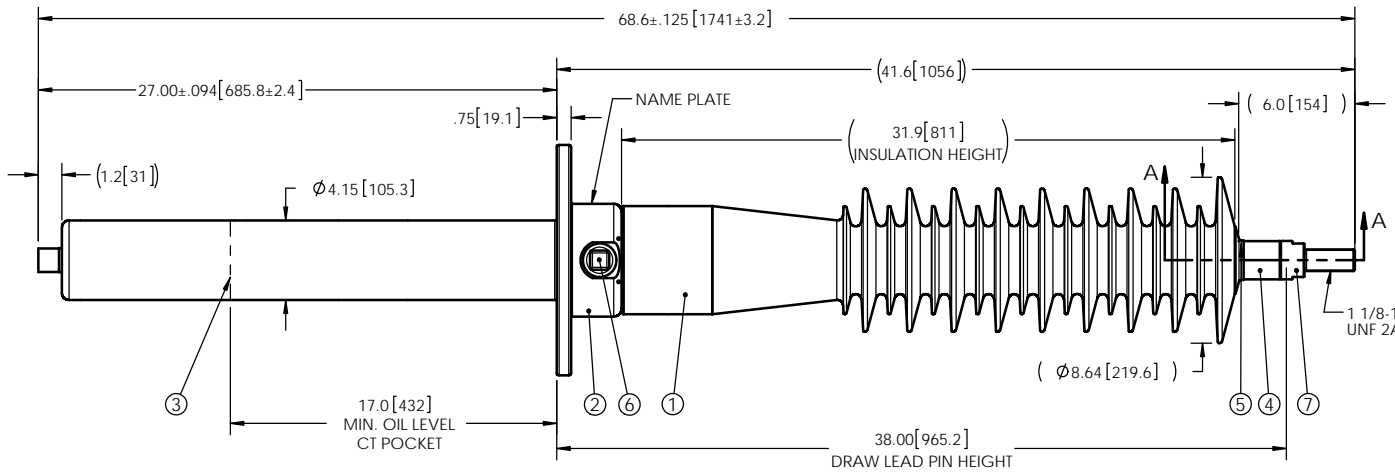
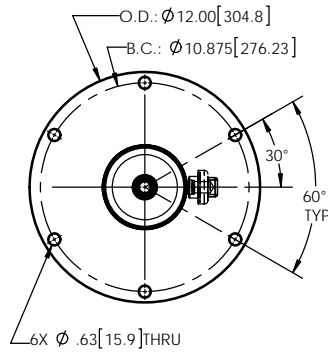


NOTES:

- | | | |
|---|--------------------------------------|-----------------------|
| 1 | CREEPAGE DISTANCE: | 75.4" / 1915 mm |
| 2 | ARC DISTANCE: | 34.0" / 864 mm |
| 3 | NOMINAL VOLTAGE: | 72.5kV |
| 4 | NOMINAL CURRENT: | 400A |
| 5 | VOLTAGE WITHSTAND, 60 sec.: | 175kV |
| 6 | BIL : | 350kV |
| 7 | ROUTINE TEST ACCORDING TO: | CSA C88.1-96 |
| 8 | MAX. TORQUE APPLIED ON FLANGE BOLTS: | 70 lbf. ft / 94.9 N·m |
| 9 | WEIGHT: | 81 lb / 36.7 Kg |

REVISIONS					
ZONE	REV.	DESCRIPTION	DRAWN BY	DATE	APPR.



ITEM NO.	QTY	DRAWING NO.	PART NO.	DESCRIPTION	NOTE / MAT'L
7	1	S-4915-4369-0		THREADED TERMINAL KIT	COPPER
6	1	S-1001-2022		CAPACITANCE TAP ASSEMBLY	ALUMINUM
5	1	S-1344-0162-1		CAP	ALUMINUM
4	1	S-2137-8175		TUBE ASSEMBLY	ALUMINUM
3	1	S-2137-8174		SHIELD ASSEMBLY	COPPER
2	1	S-2137-8173		FLANGE	ALUMINUM
1	1	S-2137-8172	-001	CASTING, CYCLOALIPHATIC RESIN	EC-APG-02

PARTS LIST					
GENERAL TOLERANCES (UNLESS OTHERWISE SPECIFIED) X. ±0.125 .X ±0.094 .XX ±0.063 .XXX ±0.010 ANGLES ±0.25° RADIUS ±0.031			Electro Composites solid HV bushings solution		
REMOVE BURRS AND BREAK SHARP EDGES DIMENSIONS ARE IN INCHES (UNLESS OTHERWISE SPECIFIED)			TITLE: SDC® BUSHING 72.5kV, 400A MODEL: 350-004-T-845-00		
DRAWN BY: J. CLICHE	DATE: 2013/11/21	PROJECT NO.:	SCALE: 1:10	DRAWING NO.: S-2137-8172	REVISION: NR
CHECK BY:	PROJECT MGR:	GENERATED BY: SolidWorks 2013	SHEET: 1 of 1		

This drawing is the proprietary property of Electro Composites (2008) ULC, not part of the public domain, and is issued with the express understanding and agreement that it is not to be reproduced or copied in whole or in part or issued for furnishing information to others, or used directly or indirectly, in any way detrimental to the interest of Electro Composites (2008) ULC and is to be returned upon request by Electro Composites (2008) ULC. All Rights Reserved.