



PCORE
ELECTRIC

KV CLASS 50 kV BIL 250 kV Uy 31 kV

CURRENT RATING

1200 AMP BOTTOM CONNECTION

DWG.	CATALOG NUMBER	GLAZE COLOR
SD	B-85412	BROWN
SD	B-85412-70	LT. GRAY

TITLE

PRC BUSHING

DATE	3-19-90	REV. DATE	10-5-09
------	---------	-----------	---------

MAXIMUM ALTITUDE	3000 m [10000 ft]
------------------	-------------------

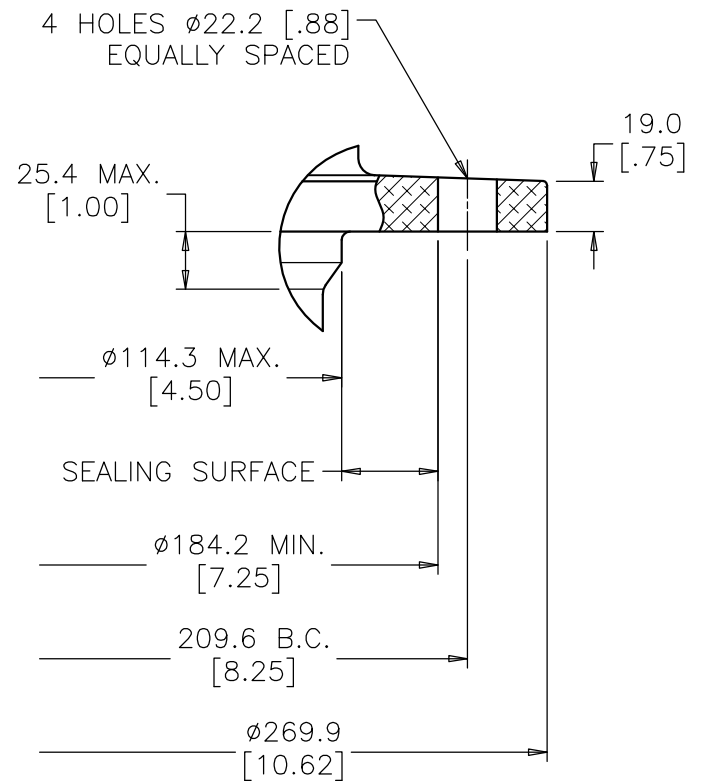
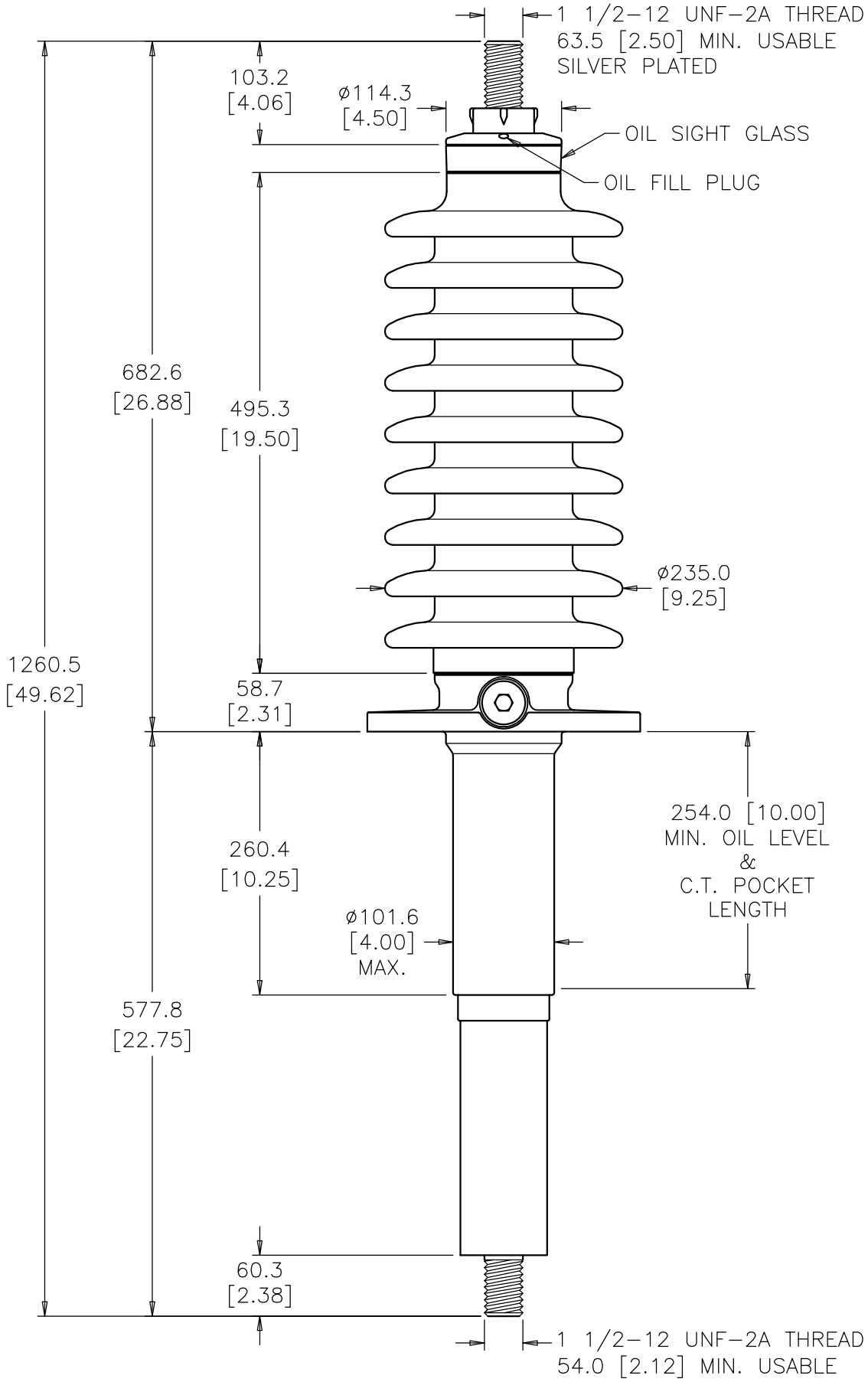
NET WEIGHT	43 kg [94 lb]
------------	---------------

ANGLE OF INCLINATION FROM THE VERTICAL	0° TO 70°
--	-----------

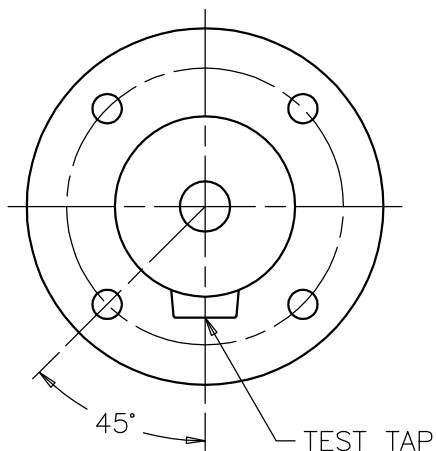
MIN. CREEP	1244.6 [49.00]	MIN. STRIKE	558.8 [22.00]
------------	----------------	-------------	---------------

CREEP/Uy	40.1 [1.58]	STD.	CSA C88.1
----------	-------------	------	-----------

PCB CONTENT OF OIL IS LESS THAN 1 ppm



MOUNTING FLANGE DETAIL



**FLANGE ALIGNMENT DIAGRAM
TOP VIEW**

DIMENSIONS IN MILLIMETERS [INCHES]

REVISION REMOVED °C, TEMPERATURE GOVERNED BY CSA STANDARDS, MIN. STRIKE WAS 21.00

SCALE 1/6

NOTE TO PURCHASER:
ALL SALES OF PCORE PRODUCTS ARE SUBJECT
TO OUR STANDARD TERMS AND CONDITIONS
AND THE LIMITED WARRANTIES THEREUNDER