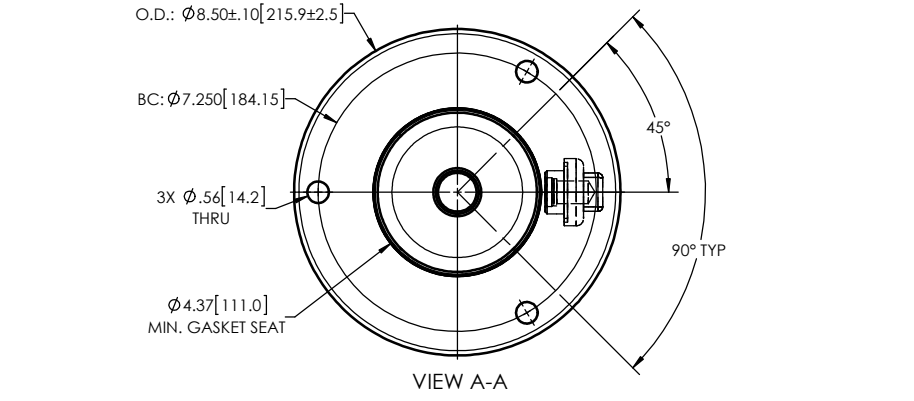
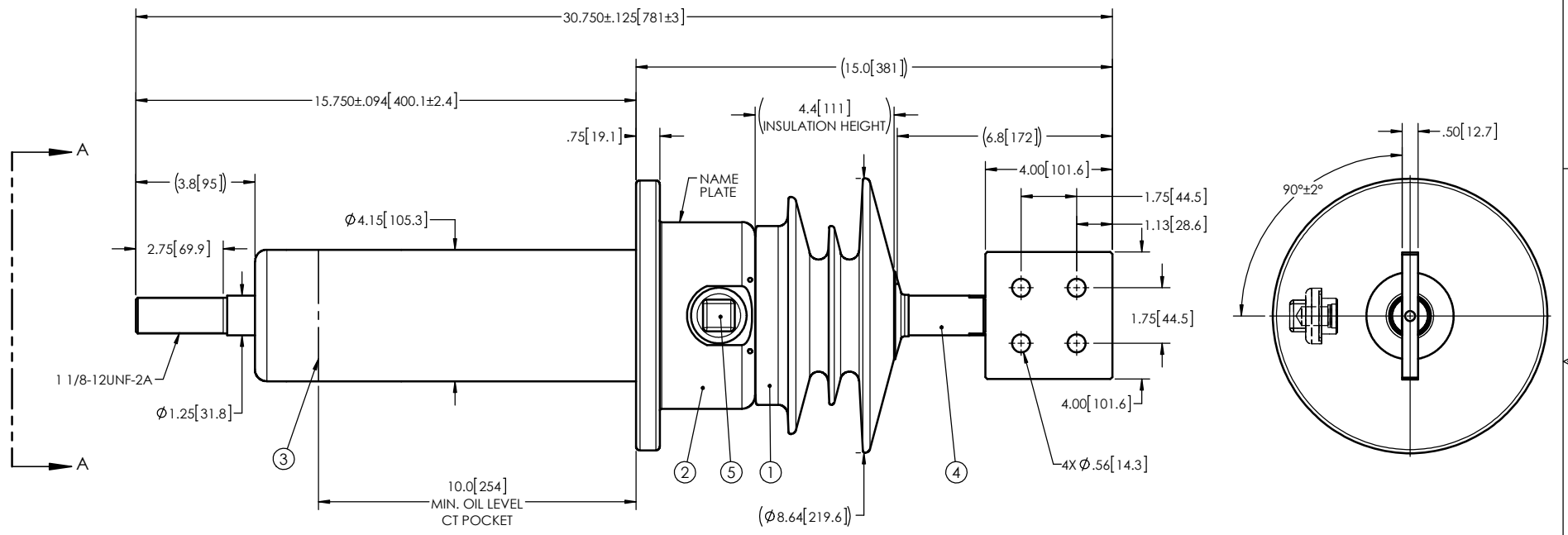


- NOTES:
- | | | |
|---|--------------------------------------|----------------------|
| 1 | CREEPAGE DISTANCE: | 12.8" / 325mm |
| 2 | ARC DISTANCE: | 7" / 180mm |
| 3 | NOMINAL VOLTAGE: | 8.7kV |
| 4 | NOMINAL CURRENT: | 800A |
| 5 | VOLTAGE WITHSTAND, 60 sec.: | 35kV |
| 6 | BIL : | 95kV |
| 7 | ROUTINE TEST ACCORDING TO: | IEEE C57.19.01 |
| 8 | MAX. TORQUE APPLIED ON FLANGE BOLTS: | 40 lbf·ft / 54.2 N·m |
| 9 | WEIGHT: | 39 lb / 17.8 Kg |

REVISIONS					
ZONE	REV.	DESCRIPTION	DRAWN BY	DATE	APPR.



ITEM NO.	QTY	DRAWING NO.	PART NO.	DESCRIPTION	NOTE / MAT'L
5	1	S-1001-2022		CAPACITANCE TAP ASSEMBLY	ALUMINUM
4	1	S-8942-8915		ROD ASSEMBLY	COPPER
3	1	S-7669-7490		SHIELD ASSEMBLY	COPPER
2	1	S-8942-8914		FLANGE	ALUMINUM
1	1	S-8942-8913	-001	CASTING, CYCLOALIPHATIC RESIN	EC-APG-02

PARTS LIST

GENERAL TOLERANCES (UNLESS OTHERWISE SPECIFIED)		Electro Composites™ solid HV bushings solution	
X.	±0.125		
.X	±0.094	TITLE: SDC® BUSHING , 8.7kV, 800A MODEL: 095-008-T-855-01	
.XX	±0.063	DRAWN BY: J.N.PILOTTE	DATE: 2015/08/07
.XXX	±0.031	CHECK BY:	PROJECT NO.:
ANGLES	±0.25°	PROJECT MGR.:	SCALE: 1:5
RADIUS	±0.031	REMOVE BURRS AND BREAK SHARP EDGES	
DIMENSIONS ARE IN INCHES (UNLESS OTHERWISE SPECIFIED)		GENERATED BY: SolidWorks 2013	
		FORMAT: A	DRAWING NO.: S-8942-8913
		REVISION: NR	SHEET: 1 of 1

This drawing is the proprietary property of Electro Composites (2008) ULC, not part of the public domain, and is issued with the express understanding and agreement that it is not to be reproduced or copied in whole or in part or issued for furnishing information to others, or used directly or indirectly, in any way detrimental to the interest of Electro Composites (2008) ULC and is to be returned upon request by Electro Composites (2008) ULC. All Rights Reserved.