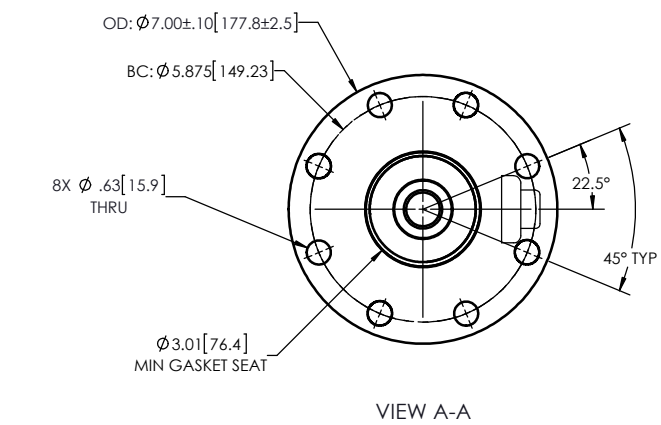
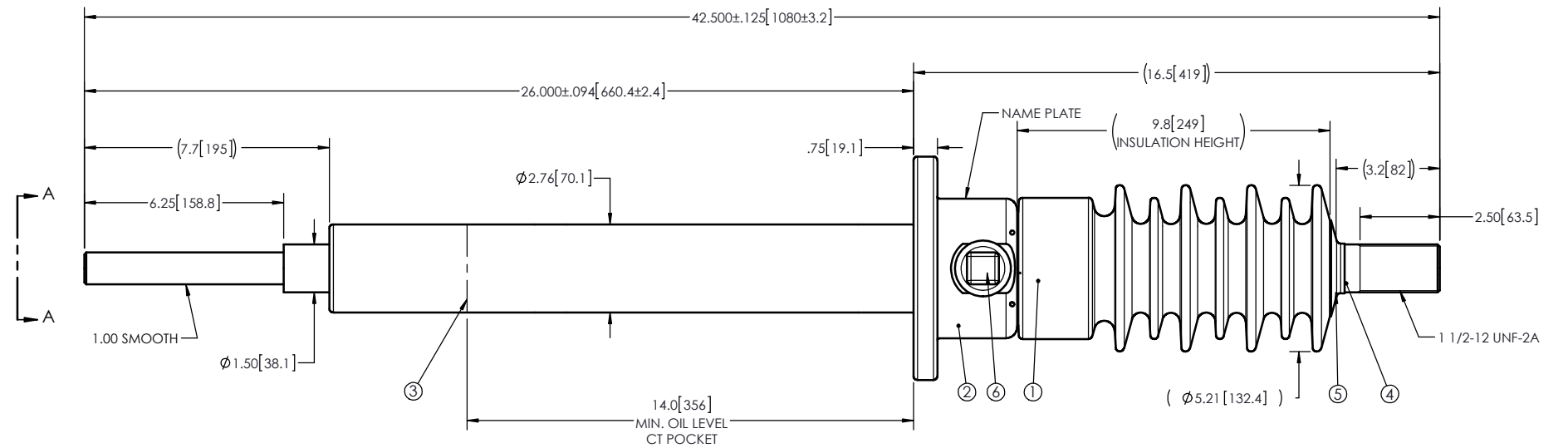


NOTES:

- 1 CREEPAGE DISTANCE: 21.1" / 534mm
- 2 ARC DISTANCE: 10.8" / 274mm
- 3 NOMINAL VOLTAGE: 25kV
- 4 NOMINAL CURRENT: 1500A
- 5 WITHSTAND VOLTAGE AT 60 sec.: 60kV
- 6 B.I.L. : 150kV
- 7 ROUTINE TEST ACCORDING TO: IEEE C57.19.01
- 8 MAX. TORQUE APPLIED ON FLANGE BOLTS: 40 lbf·ft/ 54.2 N·m
- 9 WEIGHT: 40 lb / 18 Kg

REVISIONS					
ZONE	REV.	DESCRIPTION	DRAWN BY	DATE	APPR.



ITEM NO.	QTY	DRAWING NO.	PART NO.	DESCRIPTION	NOTE / MAT'L
6	1	S-1001-2022		CAPACITANCE TAP ASSEMBLY	ALUMINUM
5	1	S-1001-0007		CAP	COPPER
4	1	S-1392-9123		ROD ASSEMBLY	COPPER
3	1	S-1392-9122		SHIELD ASSEMBLY	COPPER
2	1	S-1392-9121		FLANGE	ALUMINUM
1	1	S-1392-9120	-001	CASTING, CYLOALIPHATIC RESIN	EC-APG-02

PARTS LIST					
GENERAL TOLERANCES (UNLESS OTHERWISE SPECIFIED)		REPLACE:		ElectroComposites™ solid HV bushings solution TITLE: SDC® BUSHING 25kV, 1500A MODEL: 150-015-T-860-01	
X.	±0.125	DRAWN BY: J.N.PILOTTE DATE: 2016/07/04			
.X	±0.094	CHECK BY:		FORMAT: A	CAGE CODE:
.XX	±0.063	PROJECT ENG.:		DRAWING NO.: S-1392-9120	
.XXX	±0.031	PROJECT MANAGER:		SCALE: 1:5	REVISION: NR
ANGLES	±0.25*			GENERATED BY: SolidWorks 2013	SHEET: 1 of 1
RADIUS	±0.031				

This drawing is the proprietary property of Electro Composites (2008) ULC, not part of the public domain, and is issued with the express understanding and agreement that it is not to be reproduced or copied in whole or in part or issued for furnishing information to others, or used directly or indirectly, in any way detrimental to the interest of Electro Composites (2008) ULC and is to be returned upon request by Electro Composites (2008) ULC. All Rights Reserved.