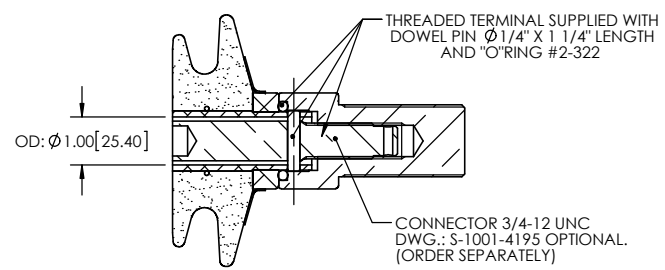
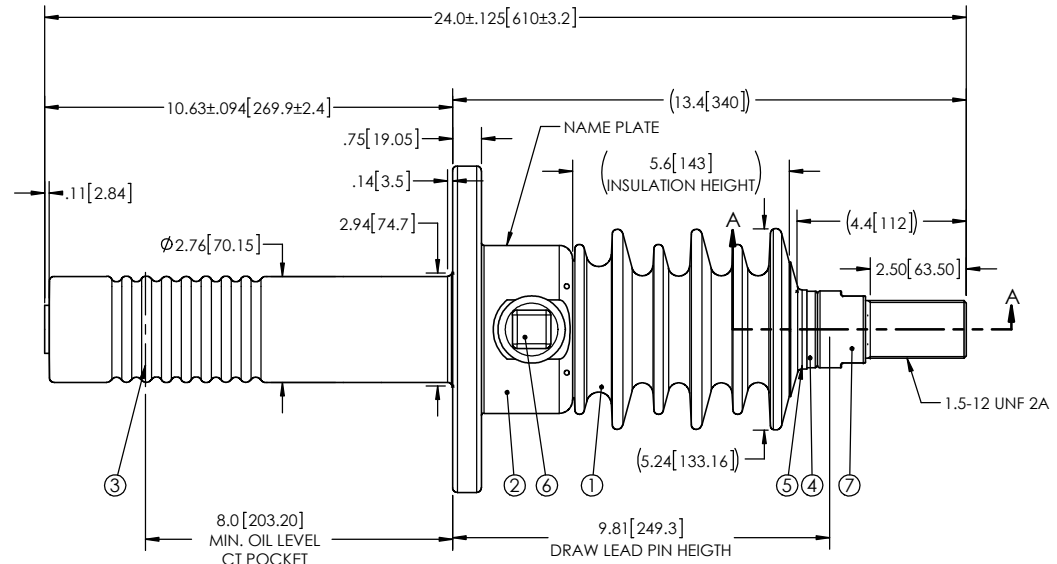
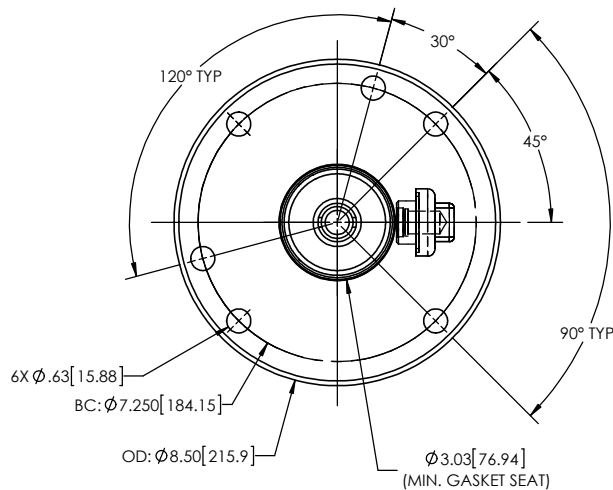


NOTES:

- 1 CREEPAGE DISTANCE: 13.6" / 345mm
- 2 ARC DISTANCE: 6.5" / 165mm
- 3 NOMINAL VOLTAGE: 8.7kV
- 4 NOMINAL CURRENT: 400A
- 5 WITHSTAND VOLTAGE AT 60 sec.: 35kV
- 6 B.I.L.: 95kV
- 7 ROUTINE TEST ACCORDING TO: IEEE C57.19.01
- 8 MAX. TORQUE APPLIED ON FLANGE BOLTS: 40 lbf x ft
- 9 WEIGHT: 16.6 / 7.5 Kg

REVISIONS					
ZONE	REV.	DESCRIPTION	DRAWN BY	DATE	APPR.



SECTION A-A  
SCALE 1 : 4

ITEM NO.	QTY	DRAWING NO.	PART NO.	DESCRIPTION	NOTE / MAT'L
7	1	S-1001-4592-0		THREADED TERMINAL KIT	COPPER
6	1	S-1001-2022		CAPACITANCE TAP ASSEMBLY	ALUMINUM
5	1	S-1344-0162-1		CAP	ALUMINUM
4	1	S-2649-8338		DRAWLEAD ASSEMBLY	ALUMINUM
3	1	S-2649-8337		SHIELD ASSEMBLY	COPPER
2	1	S-2649-8336		FLANGE	ALUMINUM
1	1	S-2649-8335	-001	CASTING, CYCLOALIPHATIC RESIN	EC-APG-02

PARTS LIST					
GENERAL TOLERANCES (UNLESS OTHERWISE SPECIFIED)			<p><b>Electro Composites</b> solid HV bushings solution</p> <p>TITLE: SDC® BUSHING 8.7kV, 400A MODEL: 095-004-T-866-00</p>		
X.	±0.125				
.X	±0.094			FORMAT	CAGE CODE
.XX	±0.063			A	
.XXX	±0.010			DRAWING NO. S-2649-8335	
ANGLES	±.25°			REVISION NR	
RADIUS	0.031			SCALE	GENERATED BY: SolidWorks 2013
REMOVE BURRS AND BREAK SHARP EDGES			SHEET 1 of 1		
DIMENSIONS ARE IN INCHES (UNLESS OTHERWISE SPECIFIED)			PROJECT MANAGER:		

This drawing is the proprietary property of Electro Composites (2008) ULC, not part of the public domain, and is issued with the express understanding and agreement that it is not to be reproduced or copied in whole or in part or issued for furnishing information to others, or used directly or indirectly, in any way detrimental to the interest of Electro Composites (2008) ULC and is to be returned upon request by Electro Composites (2008) ULC. All Rights Reserved.