



PCORE
ELECTRIC

KV CLASS 69 kV **BIL** 350 kV **Uy** 44 kV

CURRENT RATING

400 AMP DRAW LEAD CONNECTION
1200 AMP BOTTOM CONNECTED

MIN. CREEP 54.00 [1371.6] **MIN. STRIKE** 24.00 [609.6]

CREEP/L-G 1.36 [34.4] **STD.** IEEE C57.19.00/01

PCB CONTENT OF OIL IS LESS THAN 1 ppm

DWG. **CATALOG NUMBER** **GLAZE COLOR**

SD B88013-306 BROWN

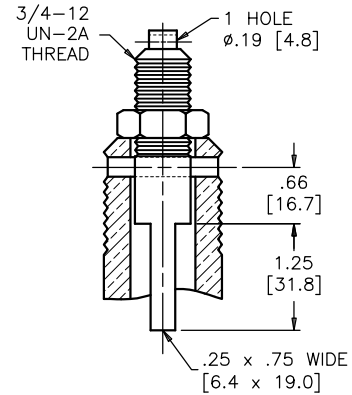
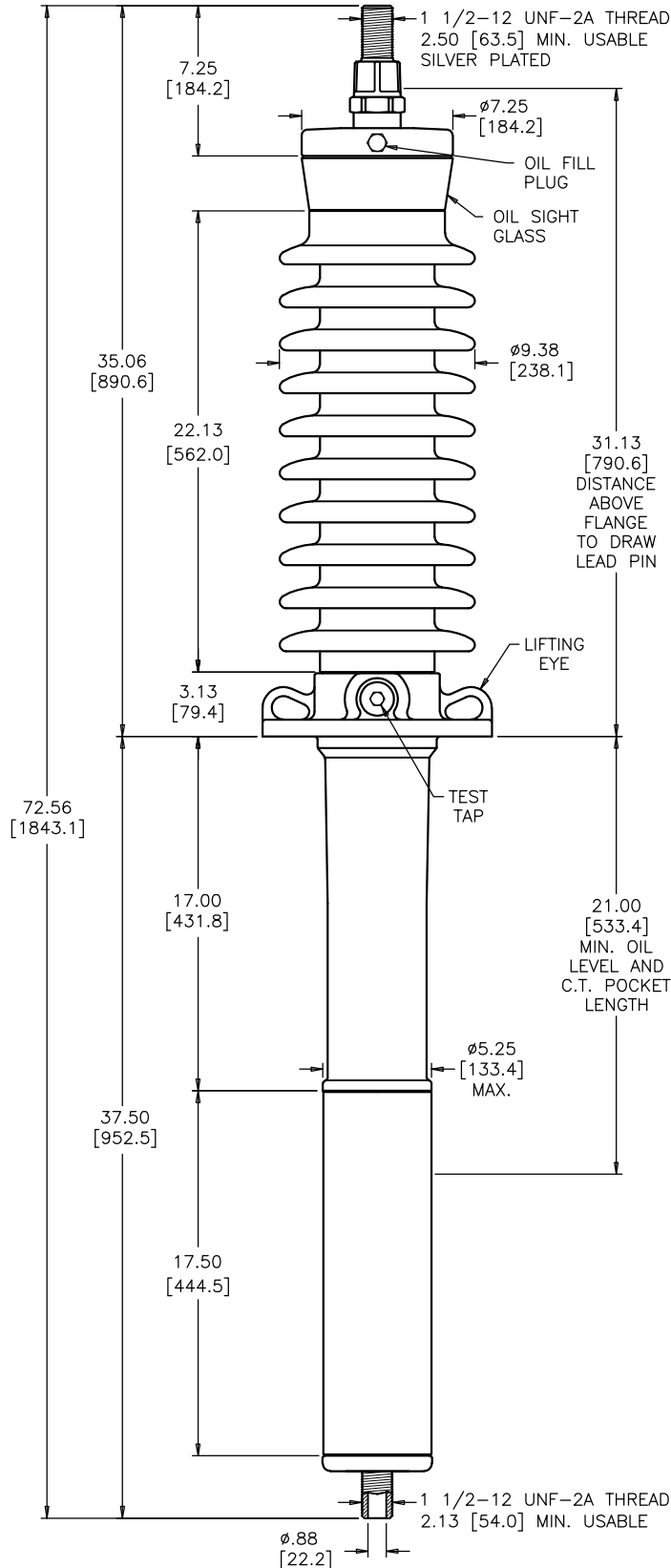
SD B88013-306-70 LT. GRAY

TITLE

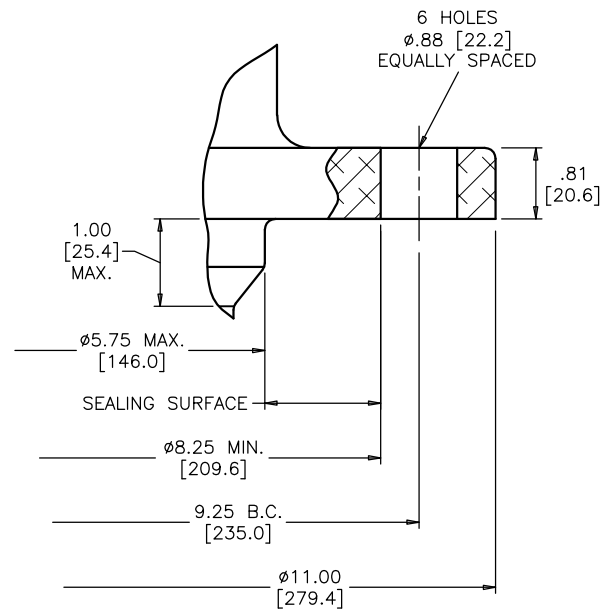
POC BUSHING

Ø5.75 [146.0] MAX. "P" DIMENSION

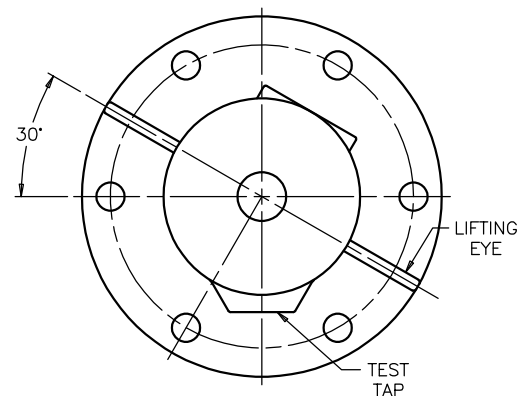
NOTE: ACTUAL DRAW-LEAD CURRENT
RATING IS DETERMINED BY
CABLE SIZE



DRAW LEAD ASSEMBLY



MOUNTING FLANGE DETAIL



**FLANGE ALIGNMENT DIAGRAM
TOP VIEW**

DIMENSIONS IN INCHES [MILLIMETERS]

REVISION NET WEIGHT WAS 150 lbs, CORRECTED ROUNDING, CREEP/L-G WAS CREEP/Uy

SCALE 1/6

NOTE TO PURCHASER:
ALL SALES OF PCORE PRODUCTS ARE SUBJECT
TO OUR STANDARD TERMS AND CONDITIONS
AND THE LIMITED WARRANTIES THEREUNDER