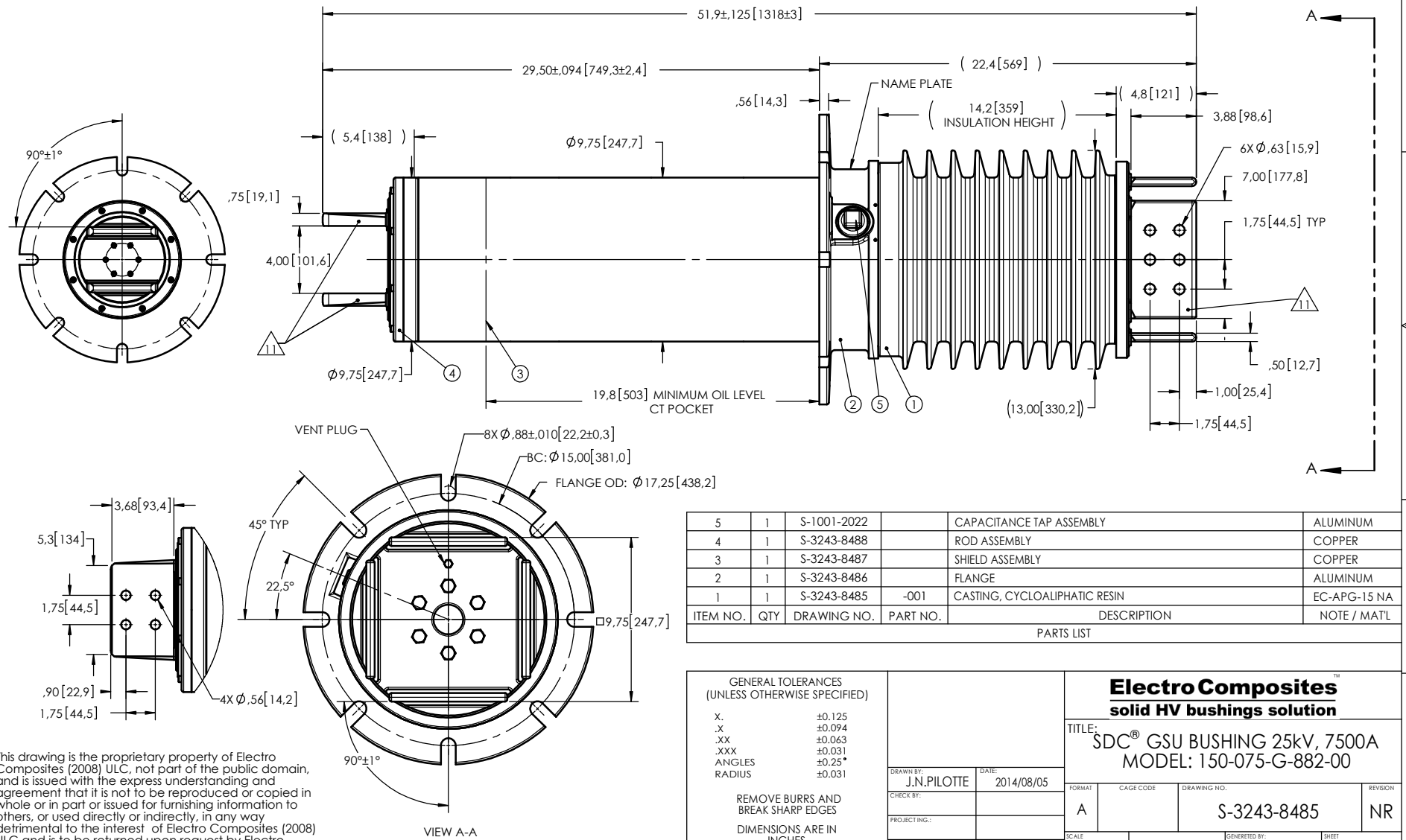


- NOTES:
- 1 CREEPAGE DISTANCE: 37.0' / 940mm
 - 2 ARC DISTANCE: 14.4" / 366mm
 - 3 NOMINAL VOLTAGE: 25kV
 - 4 NOMINAL CURRENT: 7500A
 - 5 WITHSTAND VOLTAGE AT 60 sec.: 60kV
 - 6 B.I.L. : 150kV
 - 7 ROUTINE TEST ACCORDING TO: IEEE C57.19.01
 - 8 MAX. TORQUE APPLIED ON FLANGE BOLTS: 40 lbf x ft
 - 9 WEIGHT: 360 lb / 163 Kg
 - 10 MAXIMUM OPERATING TEMPERATURE: UP TO 130°C (266°F)
 - 11 SILVER PLATED , AS PER ASTM B700,TYPE 1, GRADE D, CLASS N, NO NICKEL LAYER, FROM 13 TO 20 MICROMETERS THICKNESS
 - 12 THE TEST TAP IS RANDOMLY ORIENTED

REVISIONS					
ZONE	REV.	DESCRIPTION	DRAWN BY	DATE	APPR.



ITEM NO.	QTY	DRAWING NO.	PART NO.	DESCRIPTION	NOTE / MATL
5	1	S-1001-2022		CAPACITANCE TAP ASSEMBLY	ALUMINUM
4	1	S-3243-8488		ROD ASSEMBLY	COPPER
3	1	S-3243-8487		SHIELD ASSEMBLY	COPPER
2	1	S-3243-8486		FLANGE	ALUMINUM
1	1	S-3243-8485	-001	CASTING, CYCLOALIPHATIC RESIN	EC-APG-15 NA

PARTS LIST

Electro Composites
solid HV bushings solution

TITLE: SDC® GSU BUSHING 25kV, 7500A
MODEL: 150-075-G-882-00

GENERAL TOLERANCES (UNLESS OTHERWISE SPECIFIED)

X.	±0.125
.X	±0.094
.XX	±0.063
.XXX	±0.031
ANGLES	±0.25°
RADIUS	±0.031

REMOVE BURRS AND BREAK SHARP EDGES

DIMENSIONS ARE IN INCHES (UNLESS OTHERWISE SPECIFIED)

DRAWN BY: J.N.PILOTTE	DATE: 2014/08/05
CHECK BY:	
PROJECT ENG.:	
PROJECT MANAGER:	

FORMAT: A	CAGE CODE:	DRAWING NO.: S-3243-8485	REVISION: NR
SCALE: 1:8.5	GENERATED BY: SolidWorks 2013	SHEET: 1 of 1	

This drawing is the proprietary property of Electro Composites (2008) ULC, not part of the public domain, and is issued with the express understanding and agreement that it is not to be reproduced or copied in whole or in part or issued for furnishing information to others, or used directly or indirectly, in any way detrimental to the interest of Electro Composites (2008) ULC and is to be returned upon request by Electro Composites (2008) ULC. All Rights Reserved.