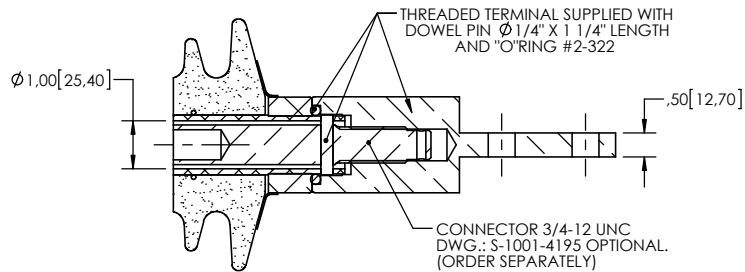
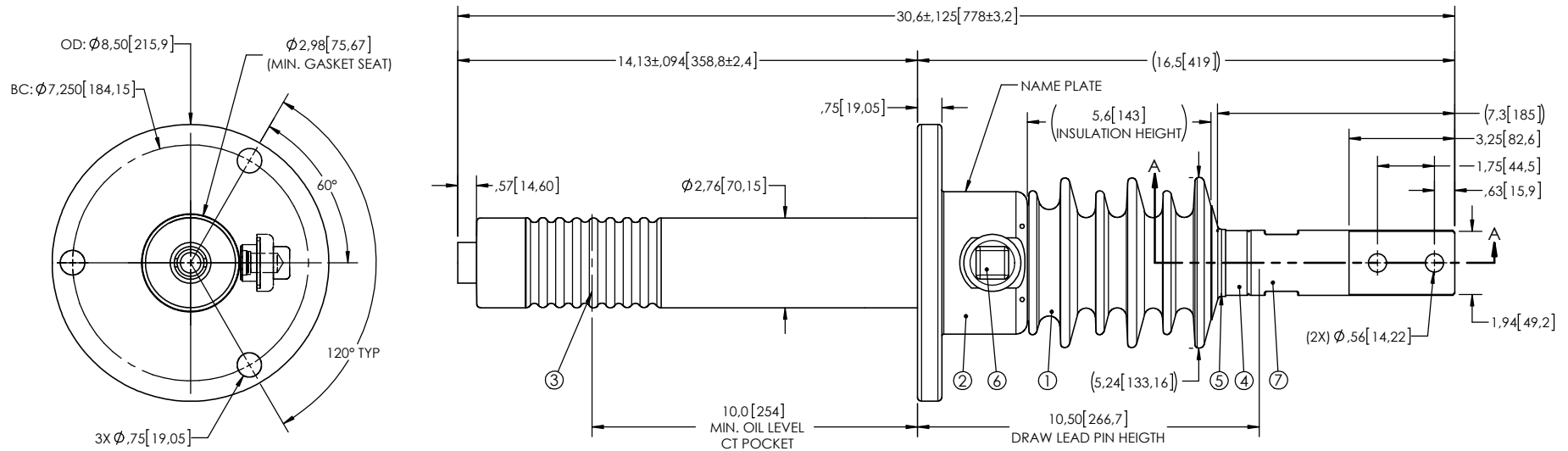


NOTES:

- 1 CREEPAGE DISTANCE: 13.5" / 342mm
- 2 ARC DISTANCE: 6.5" / 164mm
- 3 NOMINAL VOLTAGE: 15kV
- 4 NOMINAL CURRENT: 600A
- 5 WITHSTAND VOLTAGE AT 60 sec.: 50kV
- 6 B.I.L.: 110kV
- 7 ROUTINE TEST ACCORDING TO: IEEE C57.19.01
- 8 MAX. TORQUE APPLIED ON FLANGE BOLTS: 40 lbf x ft (54.2 N.m)
- 9 WEIGHT: 20 / 9.1 Kg

10 SPADE ORIENTATION WILL VARY FOR EACH BUSHING BECAUSE OF THE THREADED ASSEMBLY

REVISIONS					
ZONE	REV.	DESCRIPTION	DRAWN BY	DATE	APPR.



SECTION A-A
SCALE 1 : 4

This drawing is the proprietary property of Electro Composites (2008) ULC, not part of the public domain, and is issued with the express understanding and agreement that it is not to be reproduced or copied in whole or in part or issued for furnishing information to others, or used directly or indirectly, in any way detrimental to the interest of Electro Composites (2008) ULC and is to be returned upon request by Electro Composites (2008) ULC. All Rights Reserved.

ITEM NO.	QTY	DRAWING NO.	PART NO.	DESCRIPTION	NOTE / MAT'L
7	1	S-6392-5934-0		THREADED TERMINAL KIT	COPPER
6	1	S-1001-2022		CAPACITANCE TAP ASSEMBLY	ALUMINIUM
5	1	S-1344-0162-1		CAP	ALUMINIUM
4	1	S-3942-8513		DRAWLEAD ASSEMBLY	ALUMINIUM
3	1	S-3942-8512		SHIELD ASSEMBLY	COPPER
2	1	S-3942-8511		FLANGE	ALUMINIUM
1	1	S-3942-8510	-001	CASTING, CYCLOALIPHATIC RESIN	EC-APG-02

PARTS LIST

GENERAL TOLERANCES (UNLESS OTHERWISE SPECIFIED)

X.	±0.125
.X	±0.094
.XX	±0.063
.XXX	±0.010
ANGLES	±.25°
RADIUS	0.031

REMOVE BURRS AND BREAK SHARP EDGES

DIMENSIONS ARE IN INCHES (UNLESS OTHERWISE SPECIFIED)

Electro Composites
solid HV bushings solution

TITLE: SDC® BUSHING 15kV, 600A
MODEL: 110-006-T-884-00

DRAWN BY: J.N.PILOTTE	DATE: 2014/08/20	FORMAT: A	CAGE CODE	DRAWING NO.: S-3942-8510	REVISION: NR
CHECK BY:	PROJECT ENG.:	PROJECT MANAGER:	SCALE: 1 : 10	GENERATED BY: SolidWorks 2013	SHEET: 1 of 1