
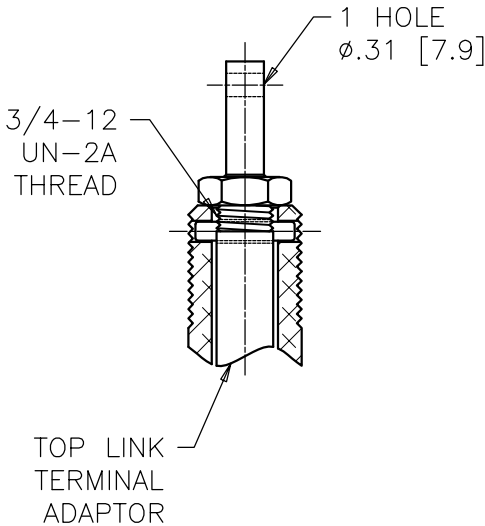
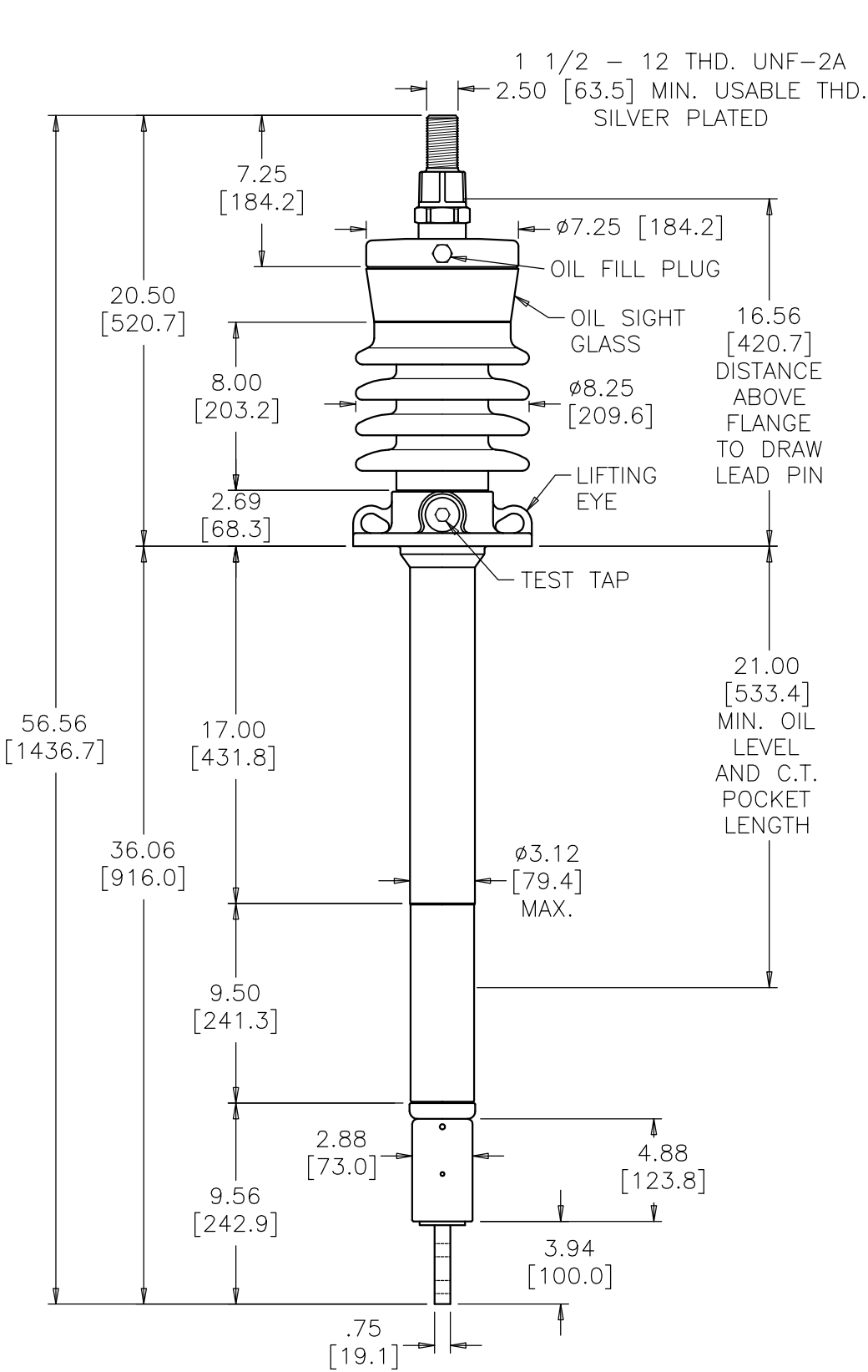
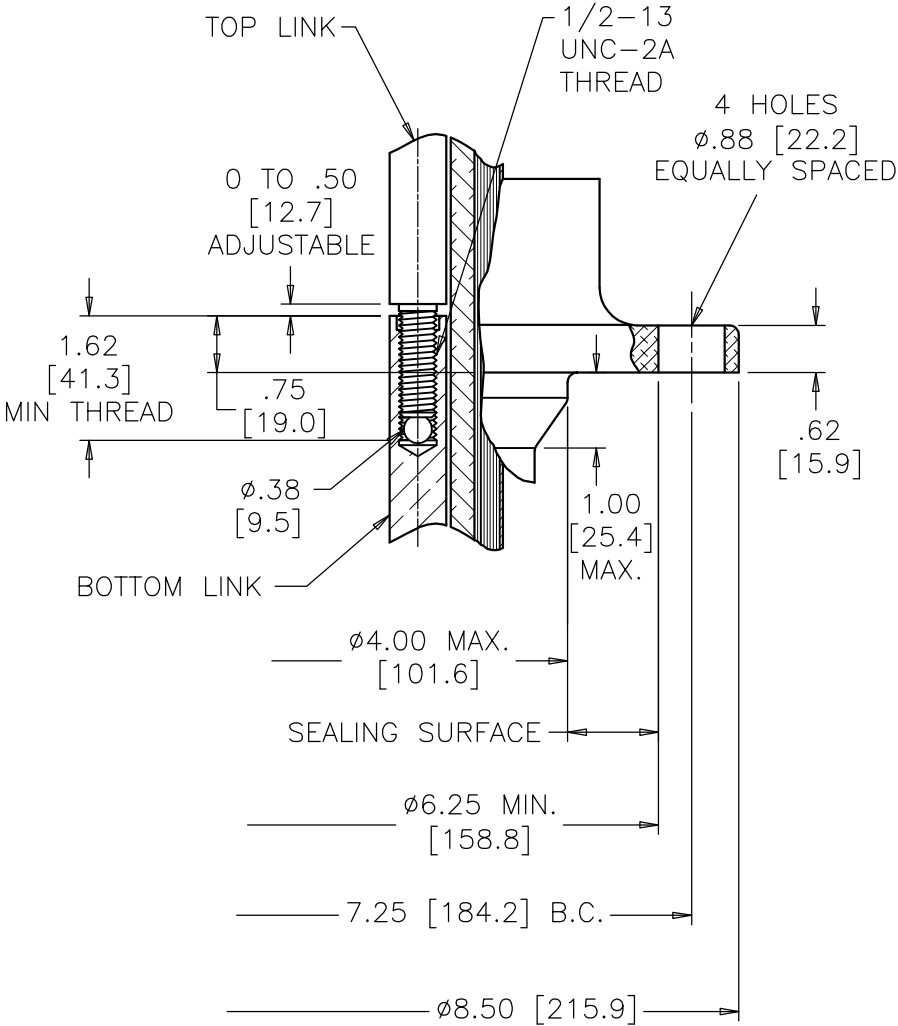


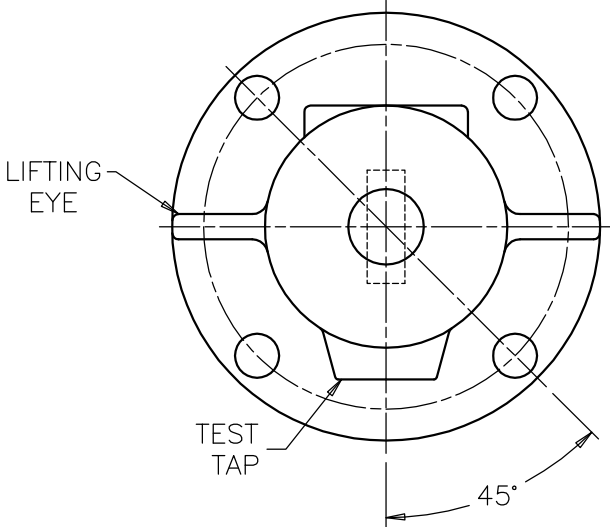
WWW.PCOREELECTRIC.COM				KV CLASS 25 kV		BIL 150 kV		Uy 16 kV		DWG.	CATALOG NUMBER	GLAZE COLOR				
<b>PCORE</b>				CURRENT RATING									SD	B88713-200	BROWN	
													SD	B88713-200-70	LT. GRAY	
DATE 7-22-03				REV. DATE 12-10-08				1200 AMP BOTTOM CONNECTION								
MAXIMUM ALTITUDE 10000 ft [3000 m]																
NET WEIGHT 90 lb [41 kg]				MIN. CREEP 19.50 [495.3]				MIN. STRIKE 11.00 [279.4]				TITLE				
ANGLE OF INCLINATION FROM THE VERTICAL 0° TO 60°				CREEP/Uy 1.22 [31.0]				STD. IEEE C57.19.00/01								
PCB CONTENT OF OIL IS LESS THAN 1 ppm												POC BUSHING				
												QUICK LINK BOTTOM CONNECTION JOINT .75 [19.0] ABOVE FLANGE MOUNTING SURFACE UNPLATED BOTTOM TERMINAL				



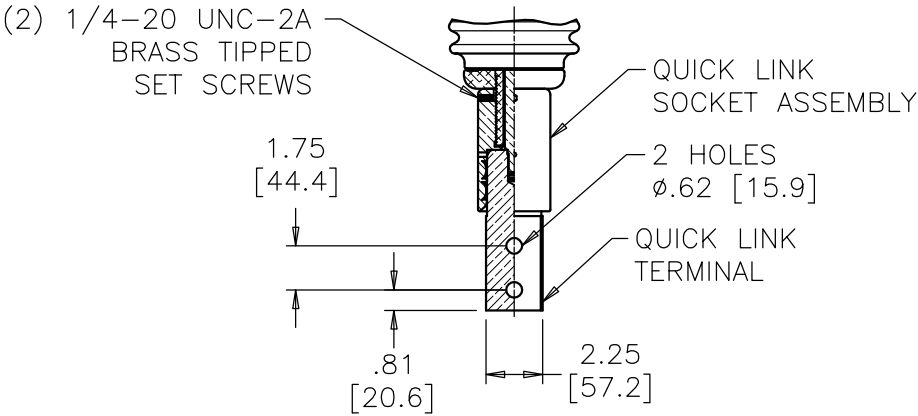
TOP LINK TERMINAL DETAIL



MOUNTING FLANGE DETAIL



FLANGE ALIGNMENT DIAGRAM  
TOP VIEW



BOTTOM TERMINAL DETAIL

DIMENSIONS IN INCHES [MILLIMETERS]

REVISION REMOVED 55°C, TEMPERATURE GOVERNED BY IEEE STANDARD, MAX. ALTITUDE WAS 3300 ft, NET WEIGHT WAS 62 lb, PCORE WAS LAPP

SCALE 1/8

NOTE TO PURCHASER:  
ALL SALES OF PCORE PRODUCTS ARE SUBJECT  
TO OUR STANDARD TERMS AND CONDITIONS  
AND THE LIMITED WARRANTIES THEREUNDER