



PCORE
ELECTRIC

KV CLASS 25 kV BIL 150 kV Uy 16 kV

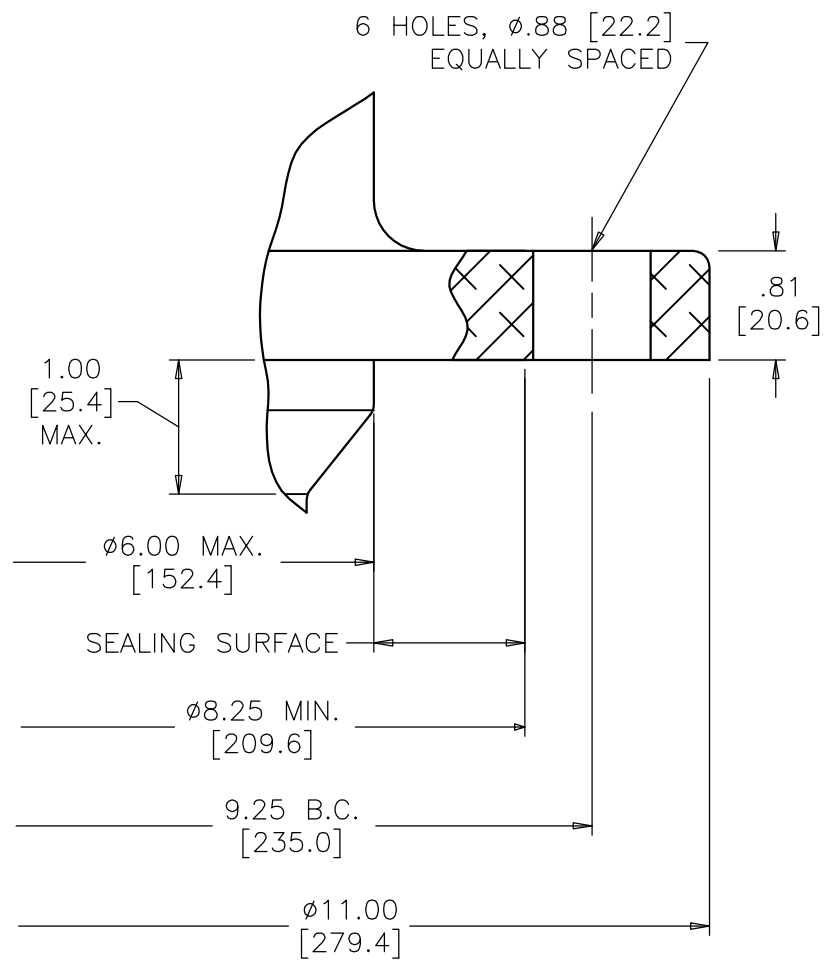
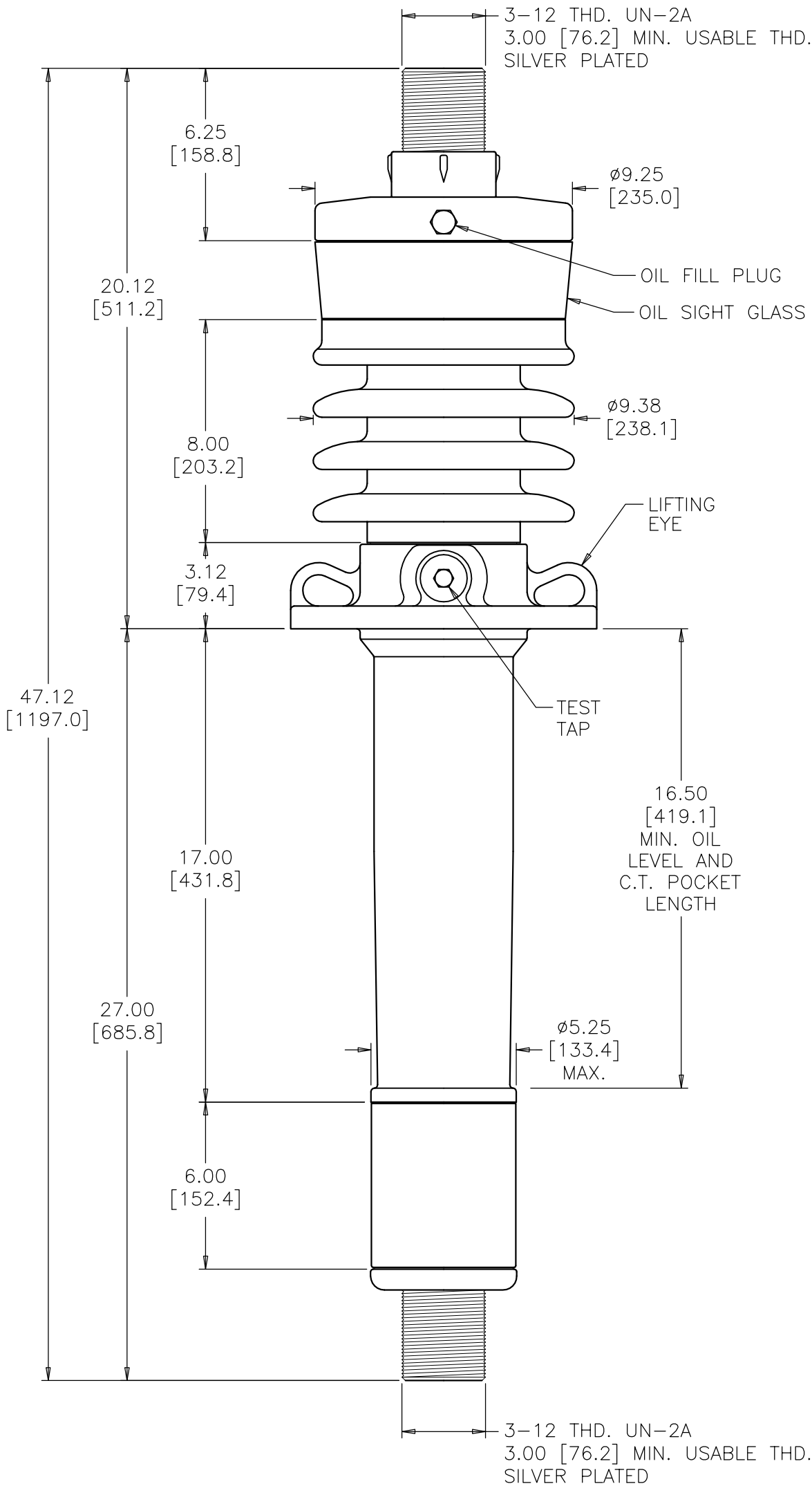
CURRENT RATING
4000 AMP BOTTOM CONNECTION

DWG.	CATALOG NUMBER	GLAZE COLOR
SD	B-88742	BROWN
SD	B-88742-70	LT. GRAY

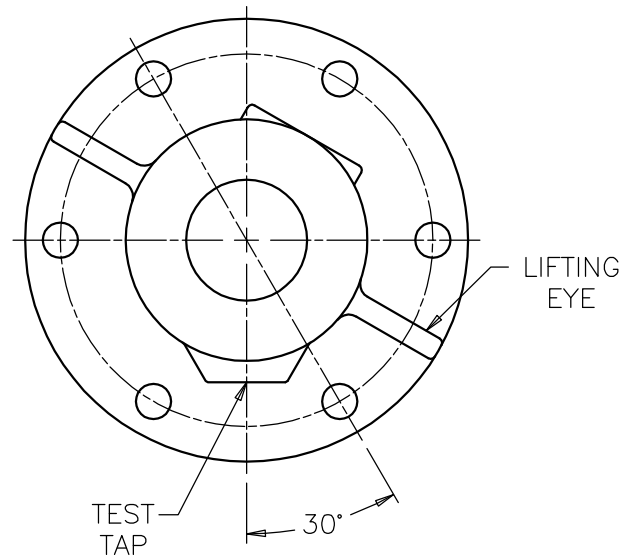
DATE	11-23-71	REV. DATE	1-16-09
MAXIMUM ALTITUDE	10000 ft [3000 m]		
NET WEIGHT	122 lb [55 kg]		
ANGLE OF INCLINATION FROM THE VERTICAL	0° TO 60°		

MIN. CREEP	19.50 [495.3]	MIN. STRIKE	11.00 [279.4]
CREEP/Uy	1.22 [31.0]	STD.	IEEE C57.19.00/01
PCB CONTENT OF OIL IS LESS THAN 1 ppm			

TITLE	POC BUSHING
-------	-------------



MOUNTING FLANGE DETAIL



FLANGE ALIGNMENT DIAGRAM TOP VIEW

DIMENSIONS IN INCHES [MILLIMETERS]

REVISION REMOVED °C, TEMPERATURE GOVERNED BY IEEE STANDARDS, MIN. CREEP WAS 19.00, MAX. ALTITUDE WAS 3300 ft

SCALE 1/5

NOTE TO PURCHASER:
ALL SALES OF PCORE PRODUCTS ARE SUBJECT TO OUR STANDARD TERMS AND CONDITIONS AND THE LIMITED WARRANTIES THEREUNDER