

kV CLASS 34.5 kV	BIL 200 kV	Uy 22 kV
-------------------------	-------------------	-----------------

DWG.	CATALOG NUMBER	GLAZE COLOR
SD	B-88832-334	BROWN
SD	B-88832-334-70	LT. GRAY

DATE	7-1-10	REV. DATE	7-1-21
-------------	--------	------------------	--------

MAXIMUM ALTITUDE	10000 ft [3000 m]
-------------------------	-------------------

NET WEIGHT	145 lb [66 kg]
-------------------	----------------

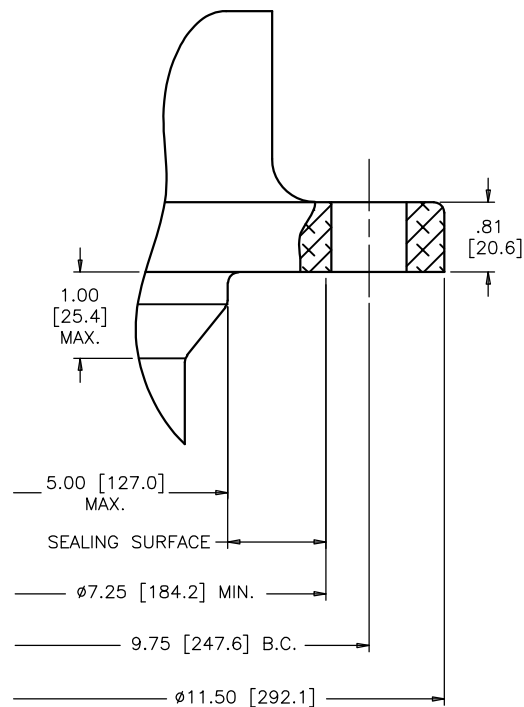
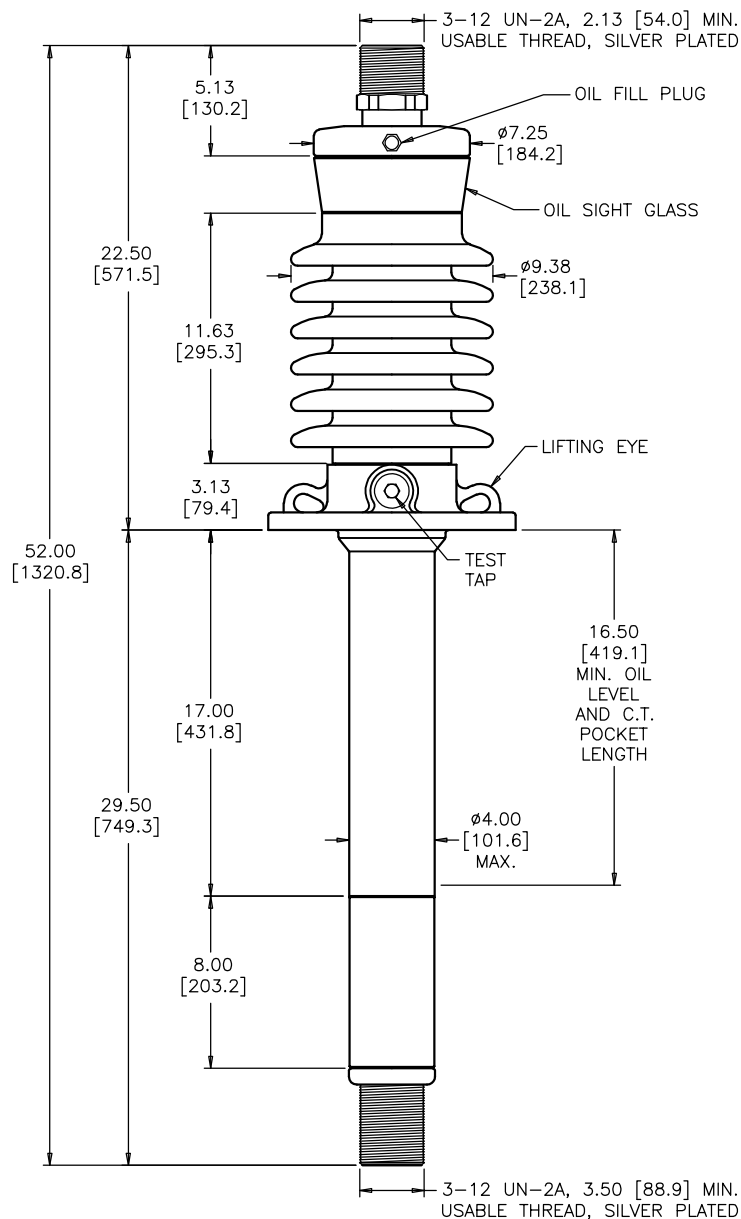
ANGLE OF INCLINATION FROM THE VERTICAL 0° TO 60°

MIN. CREEP	30.50 [774.7]	MIN. STRIKE	14.00 [355.6]
-------------------	---------------	--------------------	---------------

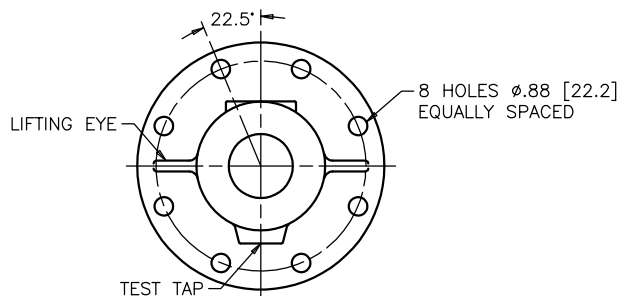
CREEP/L-G	1.53 [38.9]	STD.	IEEE C57.19.00/01
------------------	-------------	-------------	-------------------

PCB CONTENT OF OIL IS LESS THAN 1 ppm

TITLE	POC BUSHING
3-12 THREAD ADAPTORS TOP AND BOTTOM, 1.50 [38.1] LONGER BELOW FLANGE, 8 HOLE FLANGE ON 9.75 [247.6] B.C.	



MOUNTING FLANGE DETAIL



FLANGE ALIGNMENT DIAGRAM
TOP VIEW

DIMENSIONS IN INCHES [MILLIMETERS]

REVISION CREEP/L-G WAS CREEP/ U_y , CORRECTED ROUNDING

SCALE 1/6

NOTE TO PURCHASER:
ALL SALES OF PCORE PRODUCTS ARE SUBJECT
TO OUR STANDARD TERMS AND CONDITIONS
AND THE LIMITED WARRANTIES THEREUNDER