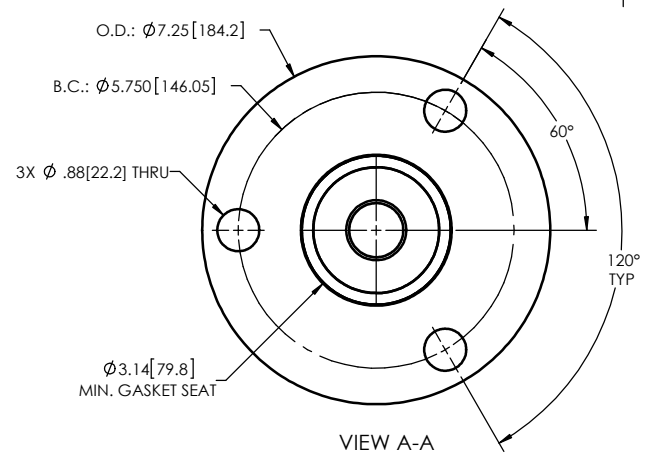
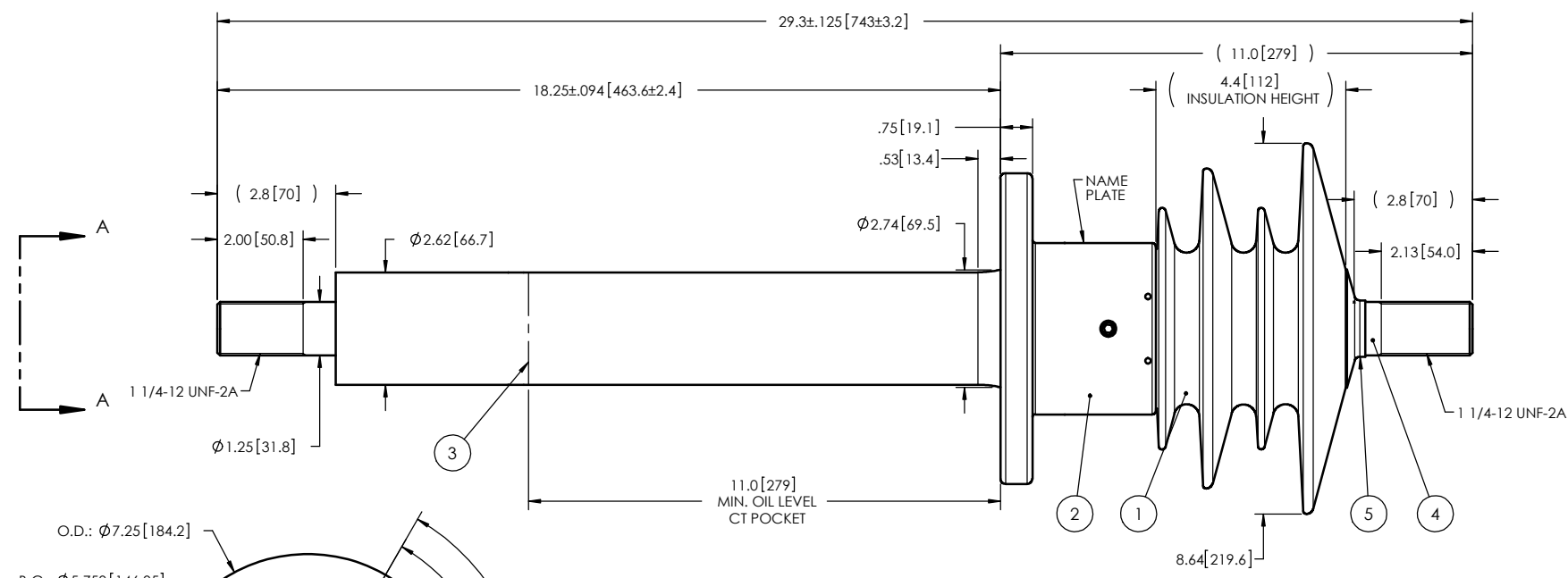


- NOTES:
- 1 CREEPAGE DISTANCE: 15.1" / 383mm
  - 2 ARC DISTANCE: 7.8" / 198 mm
  - 3 NOMINAL VOLTAGE: 15kV
  - 4 NOMINAL CURRENT: 1200A
  - 5 VOLTAGE WITHSTAND, 60 sec.: 50kV
  - 6 BIL : 110kV
  - 7 ROUTINE TEST ACCORDING TO: IEEE C57.19.01
  - 8 MAX. TORQUE APPLIED ON FLANGE BOLTS: 40 lbf·ft / 54.2 N·m
  - 9 WEIGHT: 27 lb / 12.3 Kg

REVISIONS					
ZONE	REV.	DESCRIPTION	DRAWN BY	DATE	APPR.



ITEM NO.	Qté	DRAWING NO.	PART NO.	DESCRIPTION	NOTE / MAT'L
5	1	S-1016-0008		CAP	COPPER
4	1	S-7355-8604		ROD ASSEMBLY	COPPER
3	1	S-4262-2968		SHIELD ASSEMBLY	COPPER
2	1	S-4262-2967		FLANGE	ALUMINUM
1	1	S-7355-8583	-001	CASTING, CYCLOALIPHATIC RESIN	EC-APG-02

**Electro Composites™**  
**solid HV bushings solution**

**TITLE:** SDC® BUSHING 15kV, 1200A  
MODEL: 110-012-B-891-00

DRAWN BY: J.N.PILOTTE	DATE: 2014/10/16	FORMAT: A	CAGE CODE:	DRAWING NO.: S-7355-8583	REVISION: NR
CHECK BY:	PROJECTING:	PROJECT MANAGER:	SCALE: 1:4	GENERATED BY: SolidWorks 2013	SHEET: 1 de 1

GENERAL TOLERANCES (UNLESS OTHERWISE SPECIFIED)

X.	±0.125
.X	±0.094
.XX	±0.063
.XXX	±0.031
ANGLES	±0.25°
RADIUS	±0.031

REMOVE BURRS AND BREAK SHARP EDGES

DIMENSIONS ARE IN INCHES (UNLESS OTHERWISE SPECIFIED)

This drawing is the proprietary property of Electro Composites (2008) ULC, not part of the public domain, and is issued with the express understanding and agreement that it is not to be reproduced or copied in whole or in part or issued for furnishing information to others, or used directly or indirectly, in any way detrimental to the interest of Electro Composites (2008) ULC and is to be returned upon request by Electro Composites (2008) ULC. All Rights Reserved.