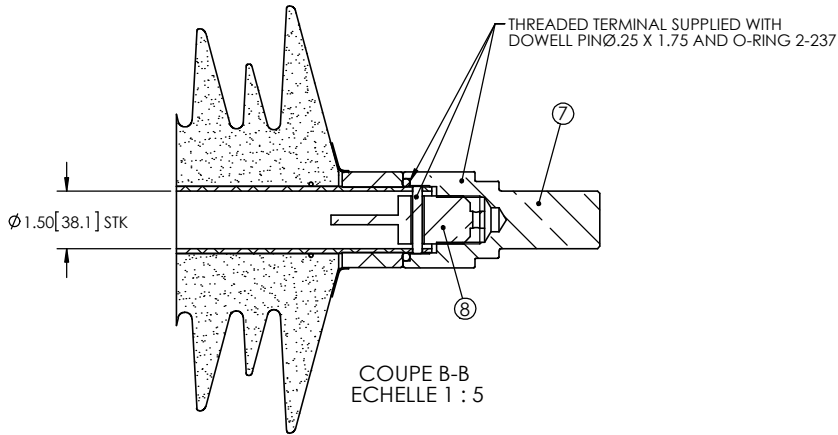
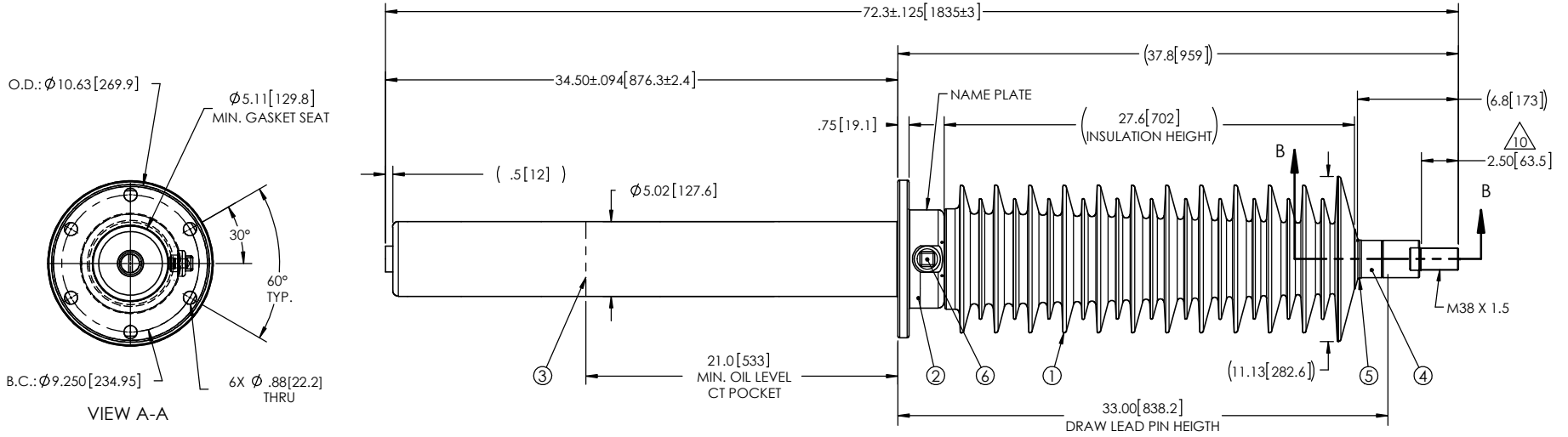


NOTES:

- 1 CREEPAGE DISTANCE: 96.6" / 2454mm
- 2 ARC DISTANCE: 31.6" / 804mm
- 3 NOMINAL VOLTAGE: 72.5kV
- 4 NOMINAL CURRENT: 800A
- 5 VOLTAGE WITHSTAND, 60 sec.: 155kV
- 6 BIL : 325kV
- 7 ROUTINE TEST ACCORDING TO: GB/T 4109
- 8 MAX. TORQUE APPLIED ON FLANGE BOLTS: 70 lb·ft / 94.9 N·m
- 9 WEIGHT: 130 lb / 59.2 Kg
- 10 SILVER PLATED, AS PER ASTM B700, TYPE 1, GRADE D, CLASS N,
NO NICKEL LAYER, FROM 13 TO 20 μm THICKNESS



ITEM NO.	QTY	DRAWING NO.	PART NO.	DESCRIPTION	NOTE / MAT'L
8	1	S-7192-6850		DRAW LEAD CONNECTOR 1 1/4-12 UNF	COPPER
7	1	S-6229-8744-1		THREADED TERMINAL KIT	COPPER
6	1	S-1001-2022		CAPACITANCE TAP ASSEMBLY	ALUMINIUM
5	1	S-3692-2417-1		CAP	ALUMINIUM
4	1	S-6229-8743		TUBE ASSEMBLY	ALUMINIUM
3	1	S-5166-4693		SHIELD ASSEMBLY	COPPER
2	1	S-5166-4676		FLANGE	ALUMINIUM
1	1	S-6229-8742		CASTING, CYCLOALIPHATIC RESIN	EC-APG-02

PARTS LIST

GENERAL TOLERANCES (UNLESS OTHERWISE SPECIFIED)

X.	±0.125
.X	±0.094
.XX	±0.063
.XXX	±0.031
ANGLES	±.25°
RADIUS	±0.031

REMOVE BURRS AND BREAK SHARP EDGES

DIMENSIONS ARE IN INCHES (UNLESS OTHERWISE SPECIFIED)

Electro Composites™
solid HV bushings solution

TITLE:
SDC® BUSHING 72.5kV, 800A
MODEL: 325-008-T-907-00

DRAWN BY: J.N.PILOTTE DATE: 2015/03/17

CHECK BY:

PROJECT MGR.:

FORMAT: A	CAGE CODE:	DRAWING NO.: S-6229-8742	REVISION: NR
-----------	------------	--------------------------	--------------

SCALE: 1:11	GENERATED BY: SolidWorks 2013	SHEET: 1 of 1
-------------	-------------------------------	---------------

This drawing is the proprietary property of Electro Composites (2008) ULC, not part of the public domain, and is issued with the express understanding and agreement that it is not to be reproduced or copied in whole or in part or issued for furnishing information to others, or used directly or indirectly, in any way detrimental to the interest of Electro Composites (2008) ULC and is to be returned upon request by Electro Composites (2008) ULC. All Rights Reserved.