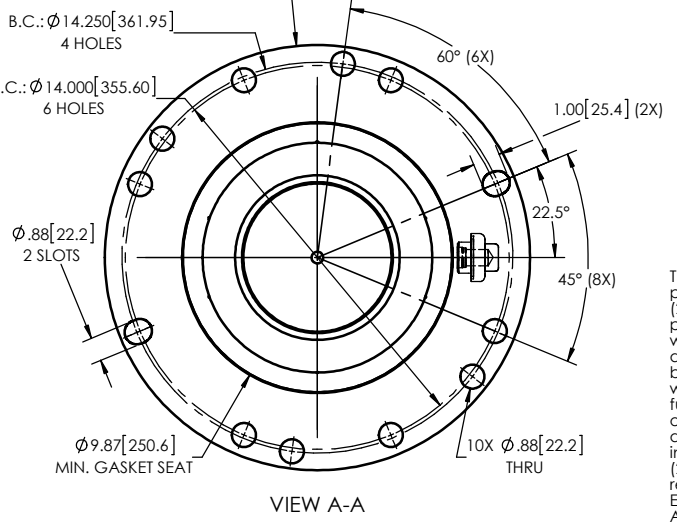
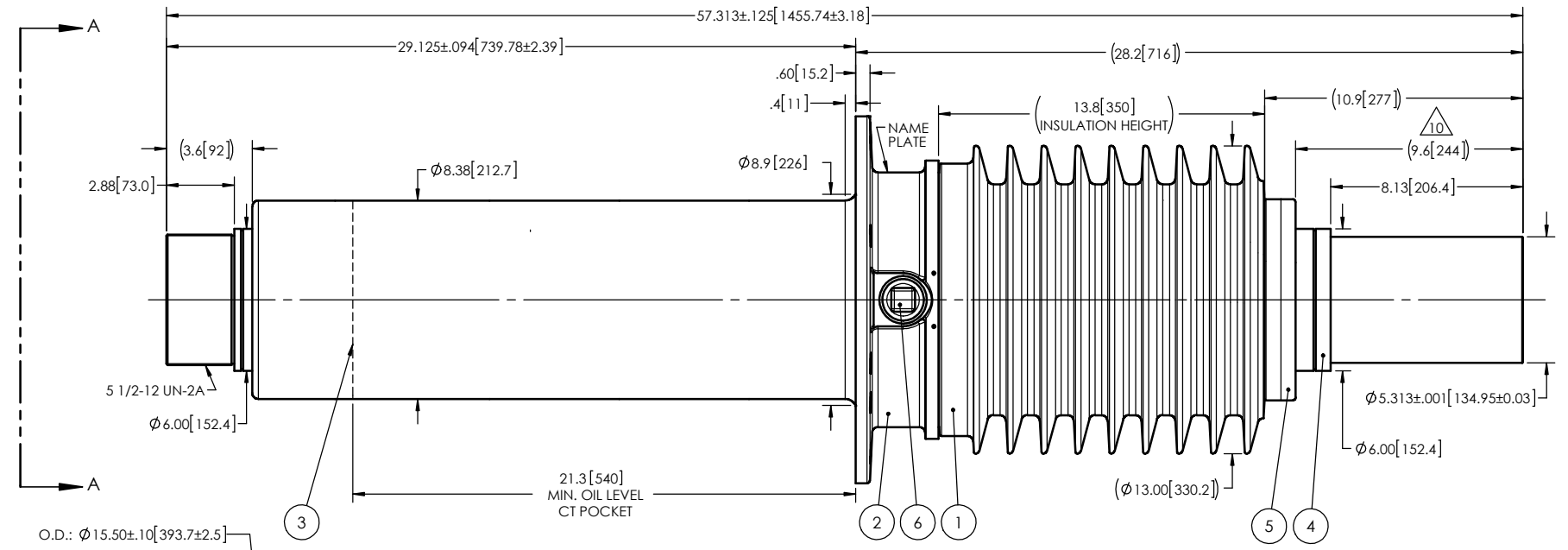


NOTES: 1 CREEPAGE DISTANCE: 37.0" / 940mm
 2 ARC DISTANCE: 15.6" / 396mm
 3 NOMINAL VOLTAGE: 25kV
 4 NOMINAL CURRENT: 5,000A
 5 VOLTAGE WITHSTAND, 60 sec.: 60kV
 6 BIL: 150kV
 7 ROUTINE TEST ACCORDING TO: IEEE C57.19.01
 8 MAX. TORQUE APPLIED ON FLANGE BOLTS: 70 lbf·ft / 94.9 N·m
 9 WEIGHT: 637 lb / 288.9 Kg

△10 SILVER PLATED, AS PER ASTM B700, TYPE 1, GRADE D, CLASS N, NO NICKEL LAYER, FROM 13 TO 20 MICROMETERS THICKNESS

REVISIONS					
ZONE	REV.	DESCRIPTION	DRAWN BY	DATE	APPR.
B4	A	THE DRAWING NO. OF THE ITEM #1 CHANGE FROM S-2602-8852 TO S-2602-8842	J. CLICHE	2015-11-04	Y.V.



This drawing is the proprietary property of Electro Composites (2008) ULC, not part of the public domain, and is issued with the express understanding and agreement that it is not to be reproduced or copied in whole or in part or issued for furnishing information to others, or used directly or indirectly, in any way detrimental to the interest of Electro Composites (2008) ULC and is to be returned upon request by Electro Composites (2008) ULC. All Rights Reserved.

ITEM NO.	QTY	DRAWING NO.	PART NO.	DESCRIPTION	NOTE / MATL
6	1	S-1001-2022		CAPACITANCE TAP ASSEMBLY	ALUMINUM
5	1	S-7225-7081		SEALING RING	ALUMINUM
4	1	S-2602-8845		ROD ASSEMBLY	COPPER
3	1	S-2602-8844		SHIELD ASSEMBLY	BRASS
2	1	S-2602-8843		FLANGE	ALUMINUM
1	1	S-2602-8842	-001	CASTING, CYCLOALIPHATIC RESIN	EC-APG-02

PARTS LIST

GENERAL TOLERANCES (UNLESS OTHERWISE SPECIFIED) X. ±0.125 .X ±0.094 .XX ±0.063 .XXX ±0.031 ANGLES ±0.25° RADIUS ±0.031		REMOVE BURRS AND BREAK SHARP EDGES DIMENSIONS ARE IN INCHES (UNLESS OTHERWISE SPECIFIED)		Electro Composites™ solid HV bushings solution	
DRAWN BY: J. CLICHE CHECK BY: PROJECT ENG.: PROJECT MANAGER:		DATE: 2015/06/03		TITLE: SDC® GSU BUSHING 25kV, 5,000A MODEL: 150-050-G-918-00	
PROJECT NO.:		SCALE: 1:7		DRAWING NO.: S-2602-8842 REVISION: A	
PROJECT MANAGER:		SCALE: 1:7		GENERATED BY: SolidWorks 2013 SHEET: 1 of 1	