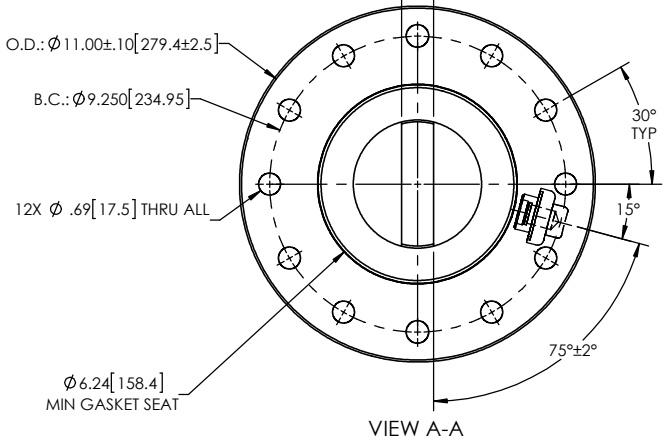
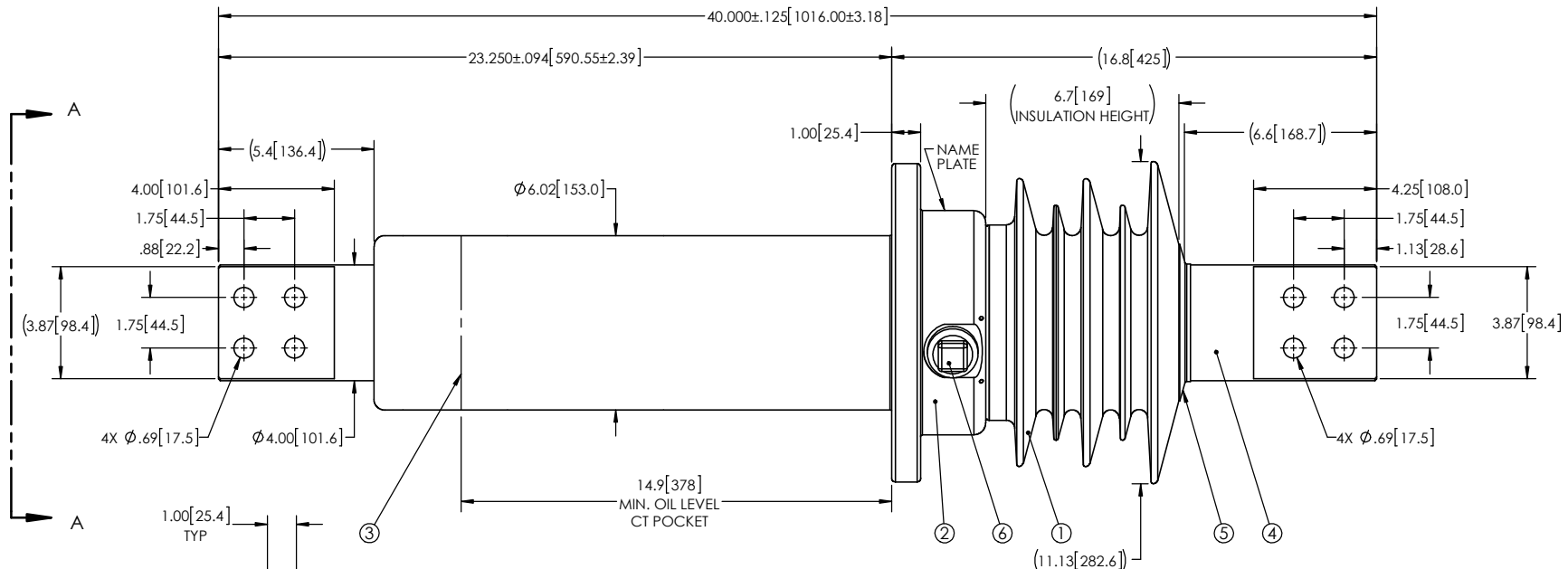


- NOTES:
- 1 CREEPAGE DISTANCE: 20.1" / 511mm
 - 2 ARC DISTANCE: 9.5" / 240mm
 - 3 NOMINAL VOLTAGE: 15kV
 - 4 NOMINAL CURRENT: 4000A
 - 5 VOLTAGE WITHSTAND, 60 sec.: 50kV
 - 6 BL : 110kV
 - 7 ROUTINE TEST ACCORDING TO: IEEE C57.19.01
 - 8 MAX. TORQUE APPLIED ON FLANGE BOLTS: 70 lbf·ft / 94.9 N·m
 - 9 WEIGHT: 181 lb / 82.2 kg

REVISIONS					
ZONE	REV.	DESCRIPTION	DRAWN BY	DATE	APPR.



ITEM NO.	QTY	DRAWING NO.	PART NO.	DESCRIPTION	NOTE / MAT'L
6	1	S-1001-2022		CAPACITANCE TAP ASSEMBLY	ALUMINUM
5	1	S-3974-3543		CAP	COPPER
4	1	S-7502-9595		ROD ASSEMBLY	COPPER
3	1	S-7502-9594		SHIELD ASSEMBLY	COPPER
2	1	S-8351-3035		FLANGE	ALUMINUM
1	1	S-7502-9593	-001	CASTING, CYCLOALIPHATIC RESIN	EC-APG-02

PARTS LIST					
GENERAL TOLERANCES (UNLESS OTHERWISE SPECIFIED)			<p>Electro Composites solid HV bushings solution</p> <p>TITLE: SDC® BUSHING 15kV, 4000A MODEL: 110-040-T-924-01</p>		
X.	±0.125				
.X	±0.094			FORMAT	CAGE CODE
.XX	±0.063			A	
.XXX	±0.010			DRAWING NO.	S-7502-9593
ANGLES	±0.25°			REVISION	NR
RADIUS	±0.031			SCALE	1:6
REMOVE BURRS AND BREAK SHARP EDGES			GENERATED BY: SolidWorks 2013		
DIMENSIONS ARE IN INCHES (UNLESS OTHERWISE SPECIFIED)			SHEET 1 of 1		

This drawing is the proprietary property of Electro Composites (2008) ULC, not part of the public domain, and is issued with the express understanding and agreement that it is not to be reproduced or copied in whole or in part or issued for furnishing information to others, or used directly or indirectly, in any way detrimental to the interest of Electro Composites (2008) ULC and is to be returned upon request by Electro Composites (2008) ULC. All Rights Reserved.