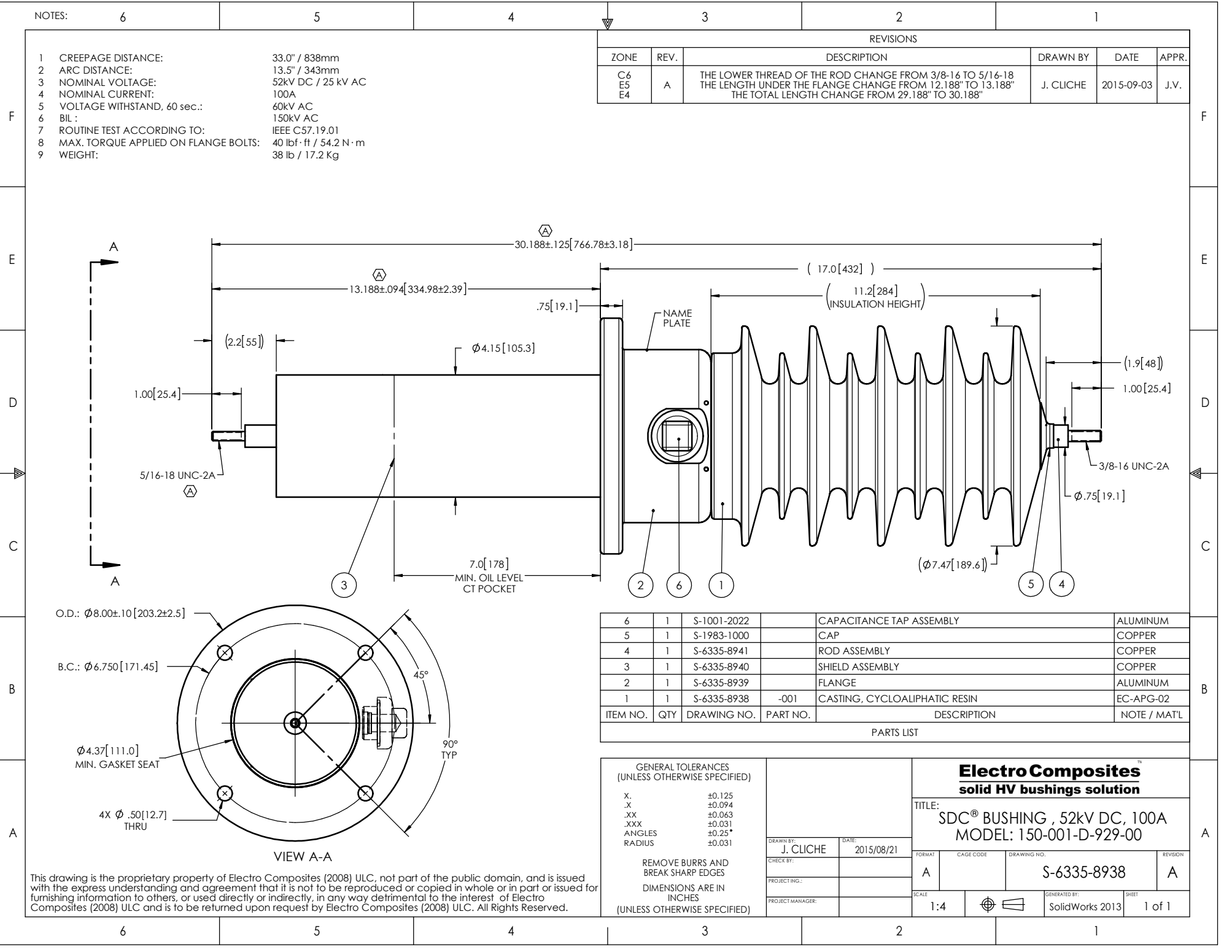


NOTES: 6

- 1 CREEPAGE DISTANCE: 33.0" / 838mm
- 2 ARC DISTANCE: 13.5" / 343mm
- 3 NOMINAL VOLTAGE: 52kV DC / 25 kV AC
- 4 NOMINAL CURRENT: 100A
- 5 VOLTAGE WITHSTAND, 60 sec.: 60kV AC
- 6 BIL : 150kV AC
- 7 ROUTINE TEST ACCORDING TO: IEEE C57.19.01
- 8 MAX. TORQUE APPLIED ON FLANGE BOLTS: 40 lbf·ft / 54.2 N·m
- 9 WEIGHT: 38 lb / 17.2 Kg

REVISIONS					
ZONE	REV.	DESCRIPTION	DRAWN BY	DATE	APPR.
C6 E5 E4	A	THE LOWER THREAD OF THE ROD CHANGE FROM 3/8-16 TO 5/16-18 THE LENGTH UNDER THE FLANGE CHANGE FROM 12.188" TO 13.188" THE TOTAL LENGTH CHANGE FROM 29.188" TO 30.188"	J. CLICHE	2015-09-03	J.V.



ITEM NO.	QTY	DRAWING NO.	PART NO.	DESCRIPTION	NOTE / MAT'L
6	1	S-1001-2022		CAPACITANCE TAP ASSEMBLY	ALUMINUM
5	1	S-1983-1000		CAP	COPPER
4	1	S-6335-8941		ROD ASSEMBLY	COPPER
3	1	S-6335-8940		SHIELD ASSEMBLY	COPPER
2	1	S-6335-8939		FLANGE	ALUMINUM
1	1	S-6335-8938	-001	CASTING, CYCLOALIPHATIC RESIN	EC-APG-02

PARTS LIST

GENERAL TOLERANCES (UNLESS OTHERWISE SPECIFIED) X. ±0.125 .X ±0.094 .XX ±0.063 .XXX ±0.031 ANGLES ±0.25° RADIUS ±0.031		Electro Composites™ solid HV bushings solution TITLE: SDC® BUSHING, 52kV DC, 100A MODEL: 150-001-D-929-00	
REMOVE BURRS AND BREAK SHARP EDGES DIMENSIONS ARE IN INCHES (UNLESS OTHERWISE SPECIFIED)			
DRAWN BY: J. CLICHE	DATE: 2015/08/21	FORMAT: A	CAGE CODE: S-6335-8938
CHECK BY:	PROJECTING:	SCALE: 1:4	DRAWING NO.: S-6335-8938
PROJECT MANAGER:	GENERATED BY: SolidWorks 2013	SHEET: 1 of 1	REVISION: A

This drawing is the proprietary property of Electro Composites (2008) ULC, not part of the public domain, and is issued with the express understanding and agreement that it is not to be reproduced or copied in whole or in part or issued for furnishing information to others, or used directly or indirectly, in any way detrimental to the interest of Electro Composites (2008) ULC and is to be returned upon request by Electro Composites (2008) ULC. All Rights Reserved.