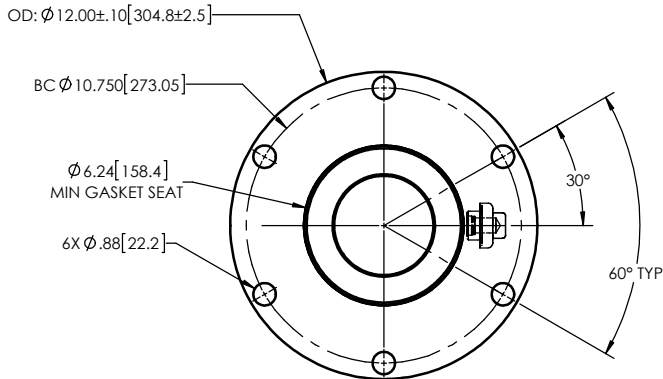
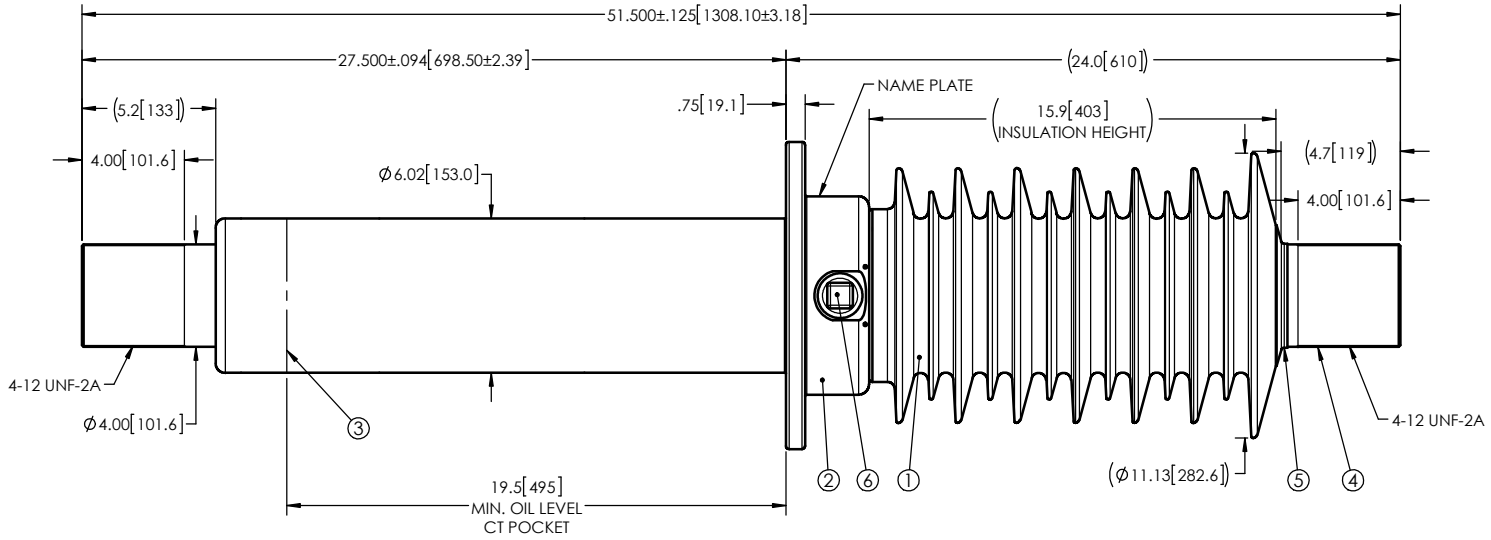


NOTES:

- 1 CREEPAGE DISTANCE: 48.1" / 1223mm
- 2 ARC DISTANCE: 18.5" / 470mm
- 3 NOMINAL VOLTAGE: 15kV
- 4 NOMINAL CURRENT: 4000A
- 5 WITHSTAND VOLTAGE AT 60 sec.: 50kV
- 6 B.I.L. : 110kV
- 7 ROUTINE TEST ACCORDING TO: CSA 88.1
- 8 MAX. TORQUE APPLIED ON FLANGE BOLTS: 70 lbf·ft / 94.9 N·m
- 9 WEIGHT: 279 lb / 125.6 Kg

REVISIONS					
ZONE	REV.	DESCRIPTION	DRAWN BY	DATE	APPR.



VIEW A-A

This drawing is the proprietary property of Electro Composites (2008) ULC, not part of the public domain, and is issued with the express understanding and agreement that it is not to be reproduced or copied in whole or in part or issued for furnishing information to others, or used directly or indirectly, in any way detrimental to the interest of Electro Composites (2008) ULC and is to be returned upon request by Electro Composites (2008) ULC. All Rights Reserved.

ITEM NO.	QTY	DRAWING NO.	PART NO.	DESCRIPTION	NOTE / MAT'L
6	1	S-1001-2022		CAPACITANCE TAP ASSEMBLY	ALUMINUM
5	1	S-3974-3543		CAP	COPPER
4	1	S-3133-8945		ROD ASSEMBLY	COPPER
3	1	S-3133-8944		SHIELD ASSEMBLY	COPPER
2	1	S-3133-8943		FLANGE	ALUMINUM
1	1	S-3133-8942	-001	CASTING, CYCLOALIPHATIC RESIN	EC-APG-02

PARTS LIST

GENERAL TOLERANCES (UNLESS OTHERWISE SPECIFIED)

X.	±0.125
.X	±0.094
.XX	±0.063
.XXX	±0.031
ANGLES	±0.25°
RADIUS	±0.031

REMOVE BURRS AND BREAK SHARP EDGES

DIMENSIONS ARE IN INCHES (UNLESS OTHERWISE SPECIFIED)

DRAWN BY: J.N.PILOTTE	DATE: 2015/08/25
CHECK BY:	
PROJECTING:	
PROJECT MANAGER:	

Electro Composites
solid HV bushings solution

TITLE:
SDC® BUSHING 15kV, 4000A
MODEL: 110-040-T-930-00

FORMAT A	CAGE CODE	DRAWING NO. S-3133-8942	REVISION NR
SCALE 1:7.5	GENERATED BY: SolidWorks 2013	SHEET 1 of 1	