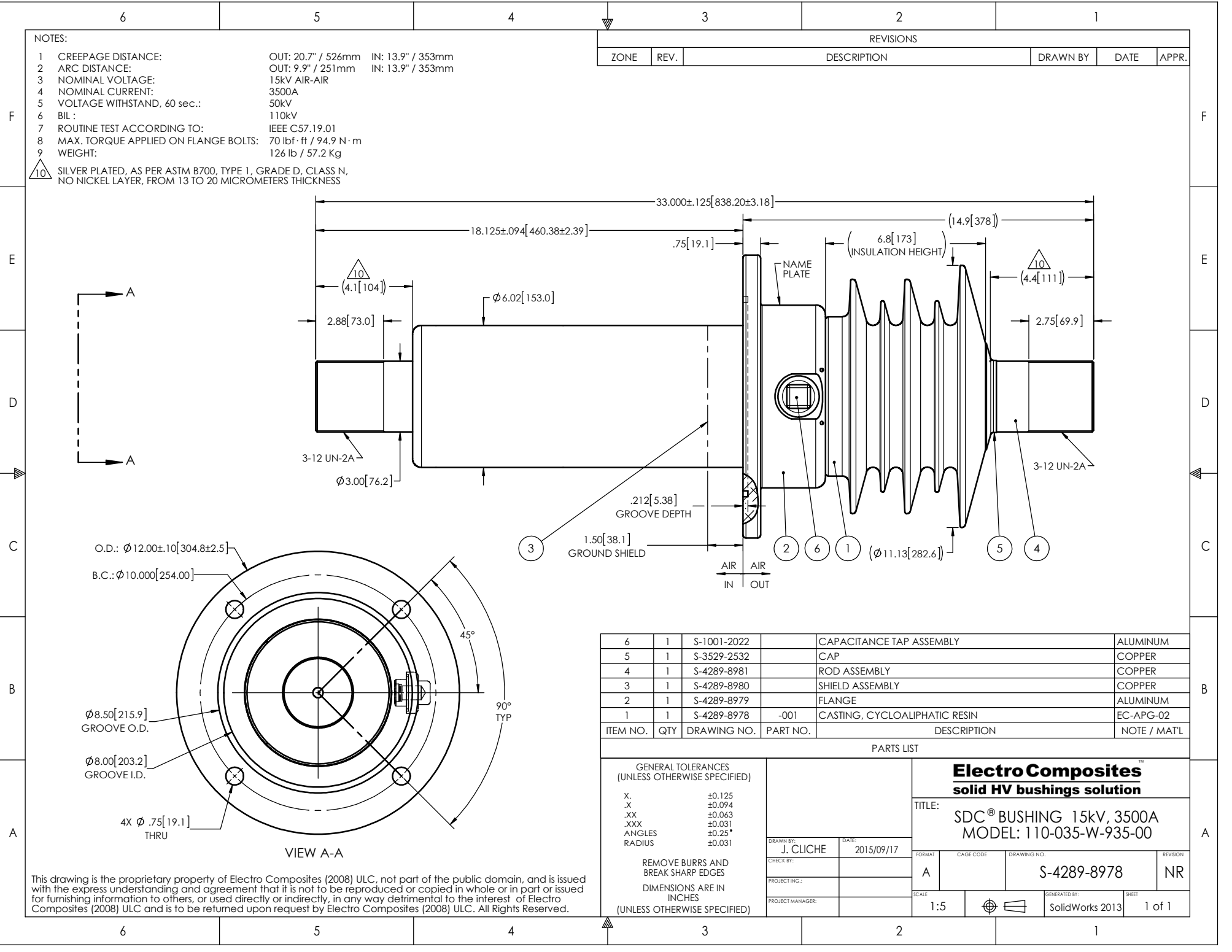


NOTES:

- 1 CREEPAGE DISTANCE: OUT: 20.7" / 526mm IN: 13.9" / 353mm
- 2 ARC DISTANCE: OUT: 9.9" / 251mm IN: 13.9" / 353mm
- 3 NOMINAL VOLTAGE: 15kV AIR-AIR
- 4 NOMINAL CURRENT: 3500A
- 5 VOLTAGE WITHSTAND, 60 sec.: 50kV
- 6 BIL: 110kV
- 7 ROUTINE TEST ACCORDING TO: IEEE C57.19.01
- 8 MAX. TORQUE APPLIED ON FLANGE BOLTS: 70 lb·ft / 94.9 N·m
- 9 WEIGHT: 126 lb / 57.2 Kg

△10 SILVER PLATED, AS PER ASTM B700, TYPE 1, GRADE D, CLASS N, NO NICKEL LAYER, FROM 13 TO 20 MICROMETERS THICKNESS

REVISIONS					
ZONE	REV.	DESCRIPTION	DRAWN BY	DATE	APPR.



ITEM NO.	QTY	DRAWING NO.	PART NO.	DESCRIPTION	NOTE / MAT'L
6	1	S-1001-2022		CAPACITANCE TAP ASSEMBLY	ALUMINUM
5	1	S-3529-2532		CAP	COPPER
4	1	S-4289-8981		ROD ASSEMBLY	COPPER
3	1	S-4289-8980		SHIELD ASSEMBLY	COPPER
2	1	S-4289-8979		FLANGE	ALUMINUM
1	1	S-4289-8978	-001	CASTING, CYCLOALIPHATIC RESIN	EC-APG-02

**Electro Composites™**  
**solid HV bushings solution**

TITLE: SDC® BUSHING 15kV, 3500A  
MODEL: 110-035-W-935-00

DRAWN BY: J. CLICHE	DATE: 2015/09/17	FORMAT: A	CAGE CODE: S-4289-8978	DRAWING NO.:	REVISION: NR
CHECK BY:	PROJECTING.:	PROJECT MANAGER:	SCALE: 1:5	GENERATED BY: SolidWorks 2013	SHEET: 1 of 1

GENERAL TOLERANCES (UNLESS OTHERWISE SPECIFIED)  
 X. ±0.125  
 .X ±0.094  
 .XX ±0.063  
 .XXX ±0.031  
 ANGLES ±0.25°  
 RADIUS ±0.031

REMOVE BURRS AND BREAK SHARP EDGES  
 DIMENSIONS ARE IN INCHES (UNLESS OTHERWISE SPECIFIED)

This drawing is the proprietary property of Electro Composites (2008) ULC, not part of the public domain, and is issued with the express understanding and agreement that it is not to be reproduced or copied in whole or in part or issued for furnishing information to others, or used directly or indirectly, in any way detrimental to the interest of Electro Composites (2008) ULC and is to be returned upon request by Electro Composites (2008) ULC. All Rights Reserved.