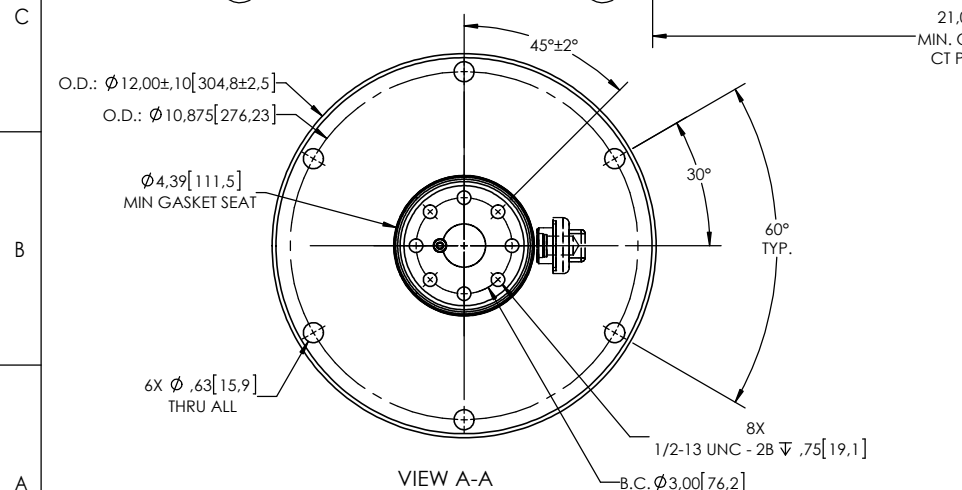
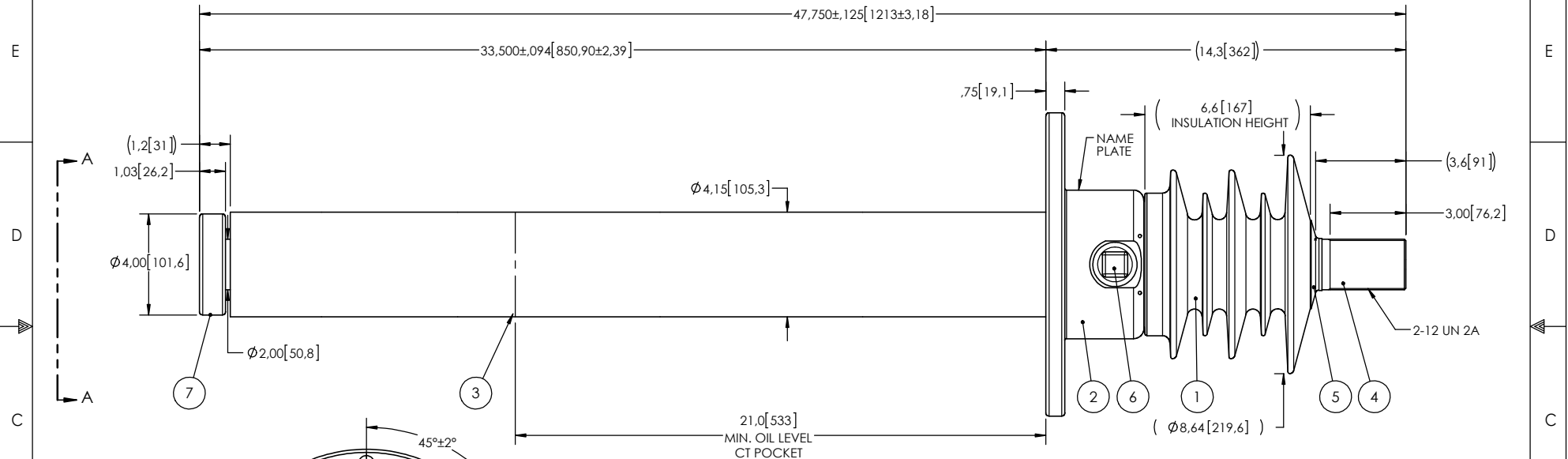


- NOTES:
- 1 CREEPAGE DISTANCE: 19.3" / 490mm
 - 2 ARC DISTANCE: 9.1" / 230mm
 - 3 NOMINAL VOLTAGE: 15kV
 - 4 NOMINAL CURRENT: 2000A
 - 5 WITHSTAND VOLTAGE AT 60 sec.: 50kV
 - 6 B.I.L. : 110kV
 - 7 APPLICATION STANDARD: IEEE C57.19.01
 - 8 MAX. TORQUE APPLIED ON FLANGE BOLTS: 40 lbf·ft / 54.2 N·m
 - 9 WEIGHT: 96 lb / 43.1 Kg

REVISIONS					
ZONE	REV.	DESCRIPTION	DRAWN BY	DATE	APPR.



ITEM NO.	QTY	DRAWING NO.	PART NO.	DESCRIPTION	NOTE / MAT'L
7	1	S-1415-3022		CONNECTING PLATE	COPPER
6	1	S-1001-2022		CAPACITANCE TAP ASSEMBLY	ALUMINUM
5	1	S-1344-0162		CAP	COPPER
4	1	S-1415-3021		ROD ASSEMBLY	COPPER
3	1	S-5364-5029		SHIELD ASSEMBLY	COPPER
2	1	S-1415-3020		FLANGE	ALUMINUM
1	1	S-1415-3019	-001	CASTING, CYCLOALIPHATIC RESIN	EC-APG-02

PARTS LIST					
GENERAL TOLERANCES (UNLESS OTHERWISE SPECIFIED)		REPLACE:		ElectroComposites™ solid HV bushings solution	
X.	±0.125				
.X	±0.094			TITLE:	
.XX	±0.063			SDC® BUSHING 15kV, 2000A	
.XXX	±0.031			MODEL: 110-020-T-938-00	
ANGLES	±0.25°			DRAWING NO.	
RADIUS	±0.031			S-1415-3019	
REMOVE BURRS AND BREAK SHARP EDGES		DRAWN BY: A.SAVARD		REVISION	
DIMENSIONS ARE IN INCHES (UNLESS OTHERWISE SPECIFIED)		DATE: 2015/10/22		NR	
		CHECK BY:		SCALE	
		PROJECTING:		1:6	
		PROJECT MANAGER:		GENERATED BY: SolidWorks 2013	
				SHEET 1 of 1	

This drawing is the proprietary property of Electro Composites (2008) ULC, not part of the public domain, and is issued with the express understanding and agreement that it is not to be reproduced or copied in whole or in part or issued for furnishing information to others, or used directly or indirectly, in any way detrimental to the interest of Electro Composites (2008) ULC and is to be returned upon request by Electro Composites (2008) ULC. All Rights Reserved.