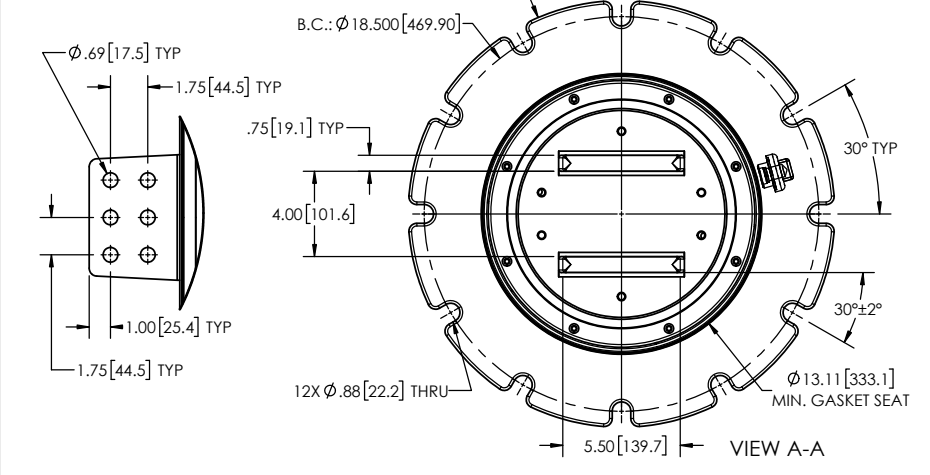
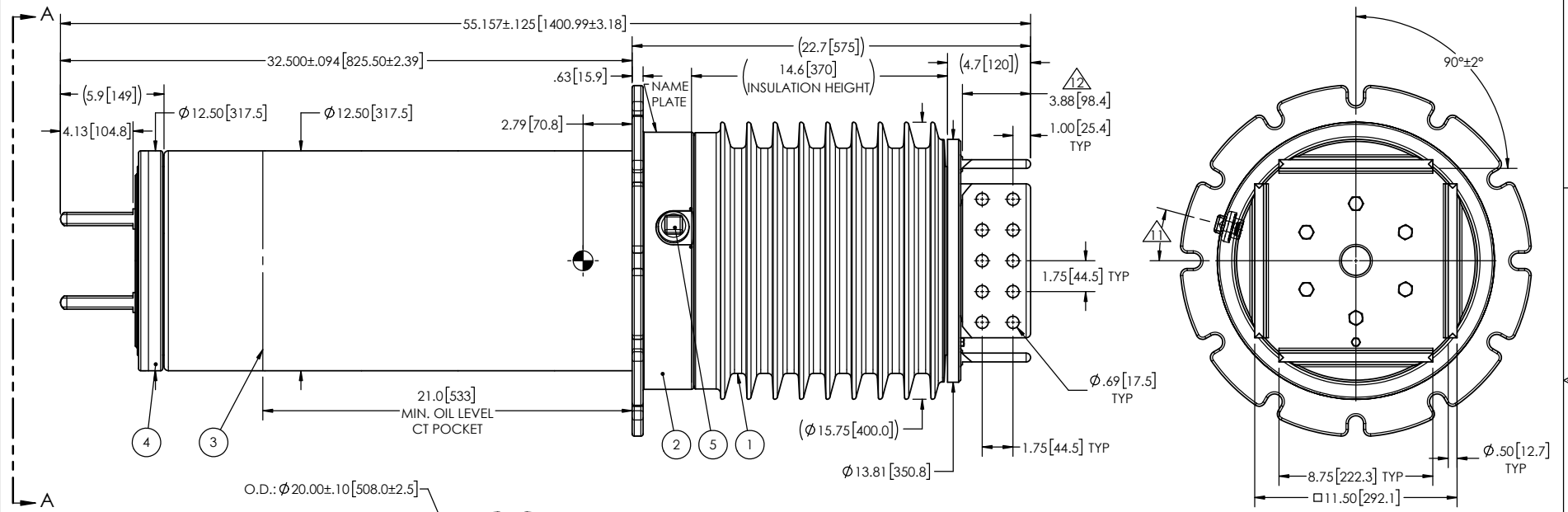


REVISIONS			DRAWN BY	DATE	APPR.
ZONE	REV.	DESCRIPTION	M. FORGET	2024-03-06	Y.V.
F6	A	UPDATE NOTE #10			

- NOTES:
- 1 CREEPAGE DISTANCE: 34.2" / 869mm
 - 2 ARC DISTANCE: 15.0" / 381mm
 - 3 NOMINAL VOLTAGE: 25kV
 - 4 NOMINAL CURRENT: 14,000A
 - 5 VOLTAGE WITHSTAND, 60 sec.: 60kV
 - 6 BIL: 150kV
 - 7 ROUTINE TEST ACCORDING TO: IEEE C57.19.04
 - 8 MAX. TORQUE APPLIED ON FLANGE BOLTS: 70 lb·ft / 94.9 N·m
 - 9 WEIGHT: 504 lb / 228.6 kg
 - 10 INSULATION THERMAL LIMIT: 130°C. BUSHING RATED PER IEEE C57.19.04 USUAL SERVICE CONDITIONS.
 - 11 THE CAPACITANCE TAP ORIENTATION CAN BE DIFFERENT FROM THE DRAWING.
 - 12 SILVER PLATED, AS PER ASTM B700, TYPE 1, GRADE D, CLASS N, NO NICKEL LAYER, FROM 13 TO 20 MICROMETERS THICKNESS



ITEM NO.	QTY	DRAWING NO.	PART NO.	DESCRIPTION	NOTE / MAT'L
5	1	S-1001-2022		CAPACITANCE TAP ASSEMBLY	ALUMINUM
4	1	S-2957-3026		TUBE ASSEMBLY	COPPER
3	1	S-5955-5590		SHIELD ASSEMBLY	BRASS
2	1	S-5955-5589		FLANGE	ALUMINUM
1	1	S-2957-3025	-001	CASTING, CYCLOALIPHATIC RESIN	EC-APG-15NA

PARTS LIST					
GENERAL TOLERANCES (UNLESS OTHERWISE SPECIFIED)			Electro Composites solid HV bushings solution		
X.	±0.125				
.X	±0.094		TITLE: SDC® GСУ BUSHING 25kV, 14,000A MODEL: 150-140-G-939-00		
.XX	±0.063		DRAWN BY: J. CLICHE	DATE: 2015/10/30	
.XXX	±0.031		CHECK BY:		
ANGLES	±0.25°		PROJECTING:		
RADIUS	±0.031		PROJECT MANAGER:		
REMOVE BURRS AND BREAK SHARP EDGES			SCALE: 1:9		
DIMENSIONS ARE IN INCHES (UNLESS OTHERWISE SPECIFIED)			GENERATED BY: SolidWorks 2023		
			SHEET: 1 OF 1		

This drawing is the proprietary property of Electro Composites (2008) ULC, not part of the public domain, and is issued with the express understanding and agreement that it is not to be reproduced or copied in whole or in part or issued for furnishing information to others, or used directly or indirectly, in any way detrimental to the interest of Electro Composites (2008) ULC and is to be returned upon request by Electro Composites (2008) ULC. All Rights Reserved.