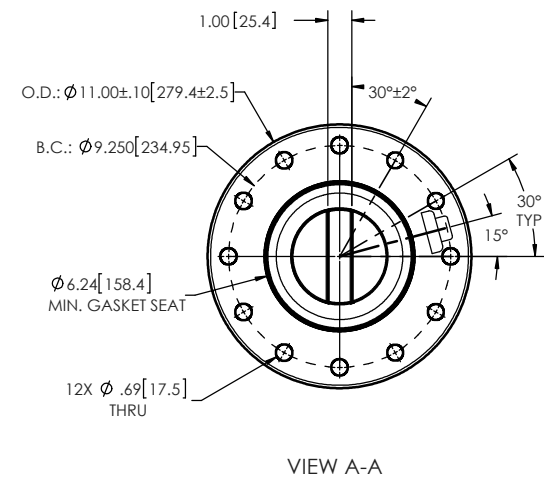
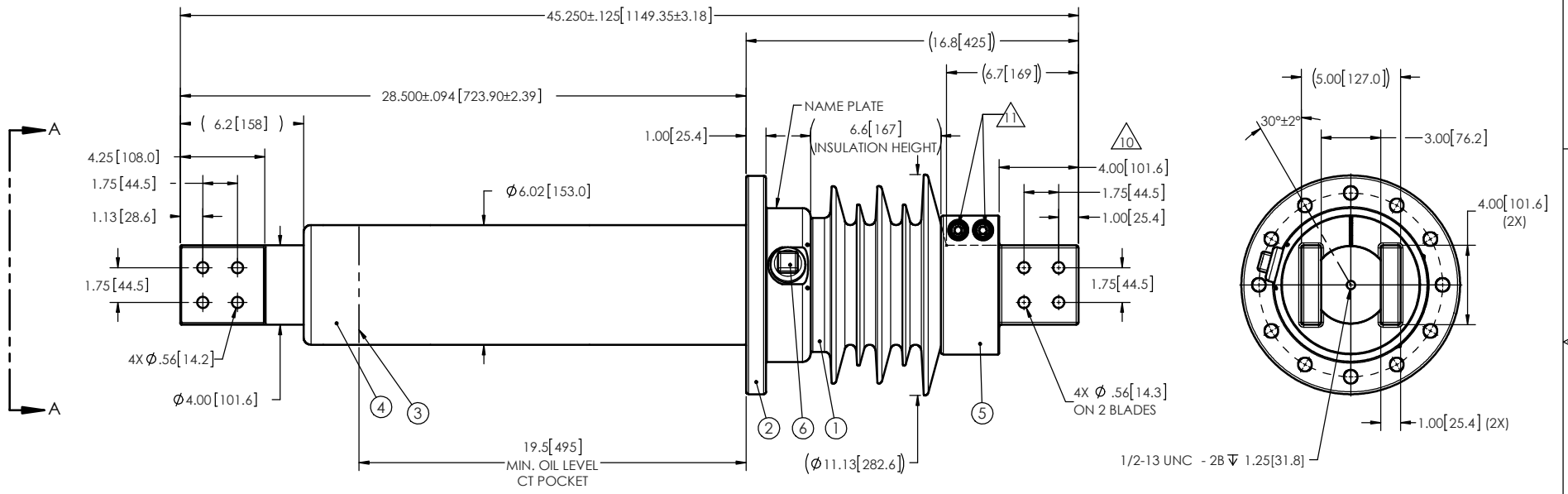


- NOTES:
- 1 CREEPAGE DISTANCE: 19.8" / 503mm
 - 2 ARC DISTANCE: 9.0" / 229mm
 - 3 NOMINAL VOLTAGE: 15kV
 - 4 NOMINAL CURRENT: 5000A
 - 5 VOLTAGE WITHSTAND, 60 sec.: 50kV
 - 6 BL : 110kV
 - 7 ROUTINE TEST ACCORDING TO: IEEE C57.19.01
 - 8 MAX. TORQUE APPLIED ON FLANGE BOLTS: 70 lbf·ft / 94.9 N·m
 - 9 WEIGHT: 191 lb / 86.6 Kg
- SILVER PLATED, AS PER ASTM B700, TYPE 1, GRADE D, CLASS N, NO NICKEL LAYER, FROM 13 TO 20 MICROMETERS THICKNESS
 APPLY A 40 lbf·ft TORQUE ON THE TWO MOUNTING SCREWS OF THE TOP TERMINAL

REVISIONS					
ZONE	REV.	DESCRIPTION	DRAWN BY	DATE	APPR.



This drawing is the proprietary property of Electro Composites (2008) ULC, not part of the public domain, and is issued with the express understanding and agreement that it is not to be reproduced or copied in whole or in part or issued for furnishing information to others, or used directly or indirectly, in any way detrimental to the interest of Electro Composites (2008) ULC and is to be returned upon request by Electro Composites (2008) ULC. All Rights Reserved.

ITEM NO.	QTY	DRAWING NO.	PART NO.	DESCRIPTION	NOTE / MAT'L
6	1	S-1001-2022		CAPACITANCE TAP ASSEMBLY	ALUMINUM
5	1	S-5742-5428		TOP TERMINAL	COPPER
4	1	S-7658-9096		ROD ASSEMBLY	COPPER
3	1	S-3133-8944		SHIELD ASSEMBLY	COPPER
2	1	S-8351-3035		FLANGE	ALUMINUM
1	1	S-7658-9095	-001	CASTING, CYCLOALIPHATIC RESIN	EC-APG-02

GENERAL TOLERANCES (UNLESS OTHERWISE SPECIFIED)		Electro Composites solid HV bushings solution	
X.	±0.125	TITLE: SDC® BUSHING 15kV, 5000A MODEL: 110-050-T-964-00	
.X	±0.094	FORMAT: A	CAGE CODE: S-7658-9095
.XX	±0.063	DRAWING NO.:	REVISION: NR
.XXX	±0.031	SCALE: 1:8	GENERATED BY: SolidWorks 2013
ANGLES	±0.25°	PROJECT MANAGER:	SHEET: 1 of 1
RADIUS	±0.031		
REMOVE BURRS AND BREAK SHARP EDGES			
DIMENSIONS ARE IN INCHES (UNLESS OTHERWISE SPECIFIED)			