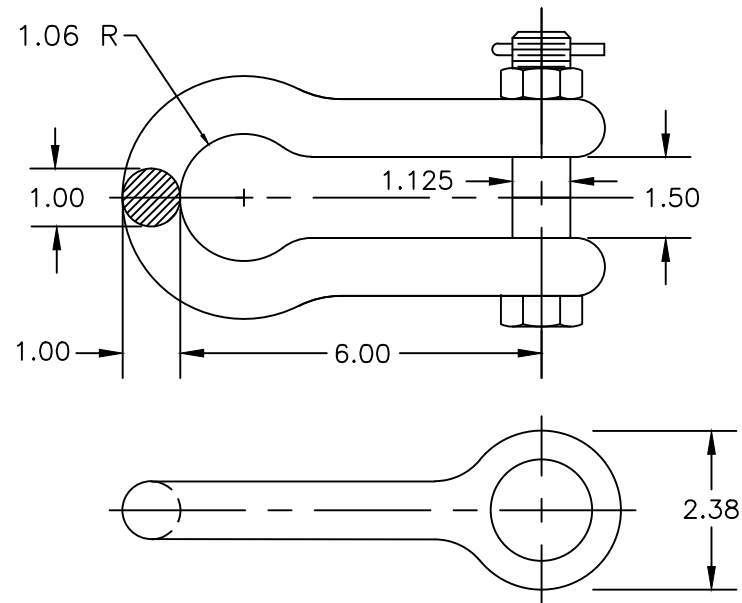


NOTES:

- 1) MATERIAL: BODY – GALVANIZED FORGED STEEL.  
COTTER PIN – STAINLESS STEEL  
CLEVIS BOLT & NUT – GALV. STEEL.
- 2) DIMENSIONS IN INCHES.
- 3) ULTIMATE STRENGTH 120,000 LB.
- 4) GALVANIZATION PER ASTM A153
- 5) WEIGHT 6.2 LBS.



EC #	DATE	CHG BY	RESP ENG	ANDERSON® TOLERANCE CHART		HUBBELL® POWER SYSTEMS				
---	---	---	---	CONFIDENTIAL: THIS DRAWING AND ITS CONTENTS ARE CONFIDENTIAL AND THE EXCLUSIVE PROPERTY OF HUBBELL POWER SYSTEMS. NO PUBLICATION, DISTRIBUTION OR COPIES MAY BE MADE WITHOUT THE WRITTEN CONSENT OF HUBBELL POWER SYSTEMS. HUBBELL POWER SYSTEMS UNPUBLISHED. ALL RIGHTS RESERVED UNDER THE COPYRIGHT LAWS.		TITLE <b>ANCHOR SHACKLE 120K LBS ULT</b>				
DESC OF DWG:						SIZE	DWG NO.	CAT / PART / ASSY NO.		REV
REASON (S) FOR CHANGE: ---						A	CUTSHEET	97415-3001		B
DISPOSITION OF MAT'L: ---						DO NOT SCALE THIS DRAWING	DRN BY JLS	DATE 4/29/14	SHEET 1 OF 1	