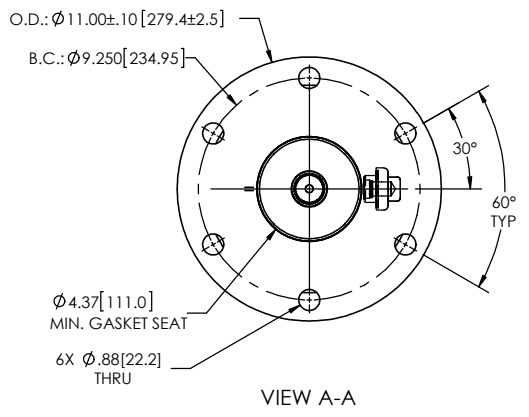
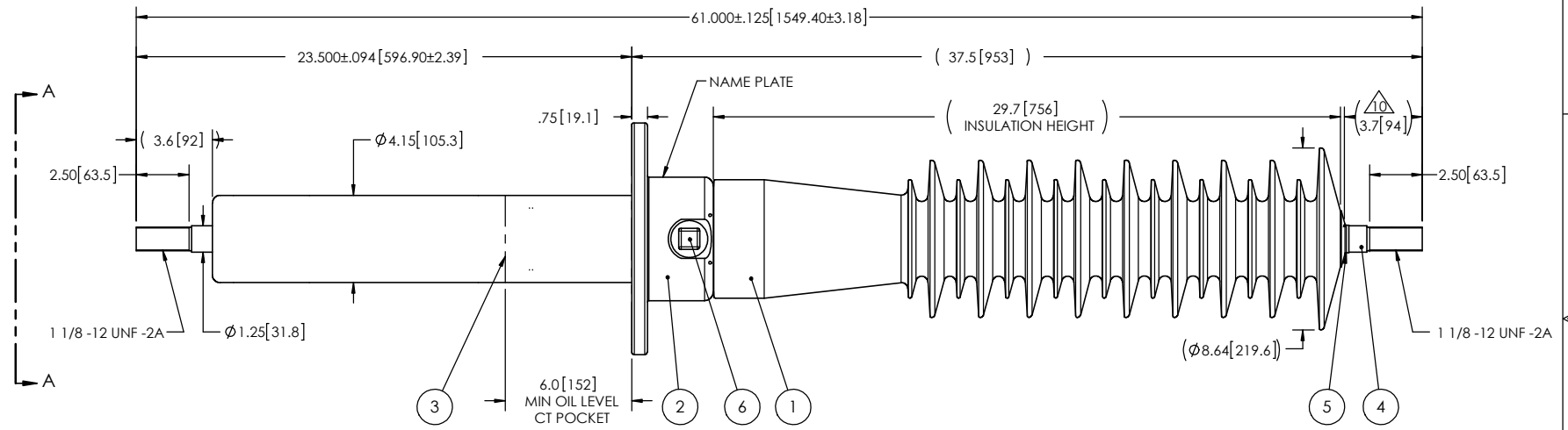


- NOTES:
- 1 CREEPAGE DISTANCE: 73.5' / 1868mm
 - 2 ARC DISTANCE: 32.3' / 821mm
 - 3 NOMINAL VOLTAGE: 69kV
 - 4 NOMINAL CURRENT: 800A
 - 5 VOLTAGE WITHSTAND, 60 sec.: 160kV
 - 6 BIL: 350kV
 - 7 ROUTINE TEST ACCORDING TO: IEEE-C57.19.01
 - 8 MAX. TORQUE APPLIED ON FLANGE BOLTS: 40 lbf·ft / 54.2 N·m
 - 9 WEIGHT: 88 lb / 39.9 kg
- △ SILVER PLATED, AS PER ASTM B700, TYPE 1, GRADE D, CLASS N, NO NICKEL LAYER, FROM 13 TO 20 MICROMETERS THICKNESS

REVISIONS					
ZONE	REV.	DESCRIPTION	DRAWN BY	DATE	APPR.



ITEM NO.	QTY	DRAWING NO.	PART NO.	DESCRIPTION	NOTE / MAT'L
6	1	S-1001-2022		CAPACITANCE TAP ASSEMBLY	ALUMINUM
5	1	S-1016-0008		CAP	COPPER
4	1	S-1788-10046		ROD ASSEMBLY	COPPER
3	1	S-1788-10045		SHIELD ASSEMBLY	COPPER
2	1	S-7811-7665		FLANGE	ALUMINUM
1	1	S-1788-10044	-001	CASTING, CYCLOALIPHATIC RESIN	EC-APG-02

GENERAL TOLERANCES (UNLESS OTHERWISE SPECIFIED)

X. ±0.125
 .X ±0.094
 .XX ±0.063
 .XXX ±0.031
 ANGLES ±0.25°
 RADIUS ±0.031

REMOVE BURRS AND BREAK SHARP EDGES

DIMENSIONS ARE IN INCHES (UNLESS OTHERWISE SPECIFIED)

Electro Composites™
solid HV bushings solution

TITLE: SDC® BUSHING 69kV, 800A
 MODEL: 350-008-T-984-01

DRAWN BY: M. FORGET DATE: 2019/09/23

PROJECT NO.: _____

PROJECT MANAGER: _____

SCALE: 1:8

GENERATED BY: SolidWorks 2013 SHEET: 1 of 1

REVISION: NR

This drawing is the proprietary property of Electro Composites (2008) ULC, not part of the public domain, and is issued with the express understanding and agreement that it is not to be reproduced or copied in whole or in part or issued for furnishing information to others, or used directly or indirectly, in any way detrimental to the interest of Electro Composites (2008) ULC and is to be returned upon request by Electro Composites (2008) ULC. All Rights Reserved.