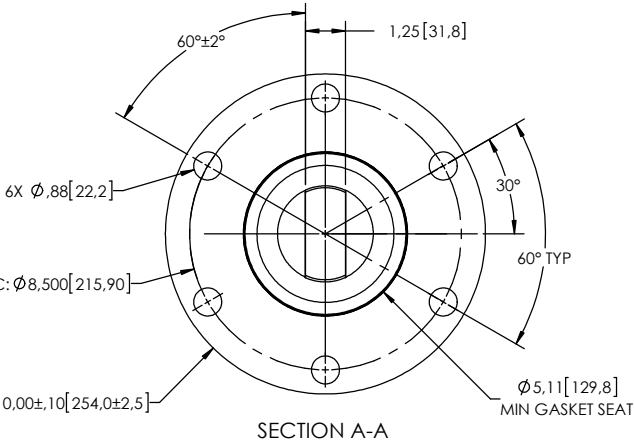
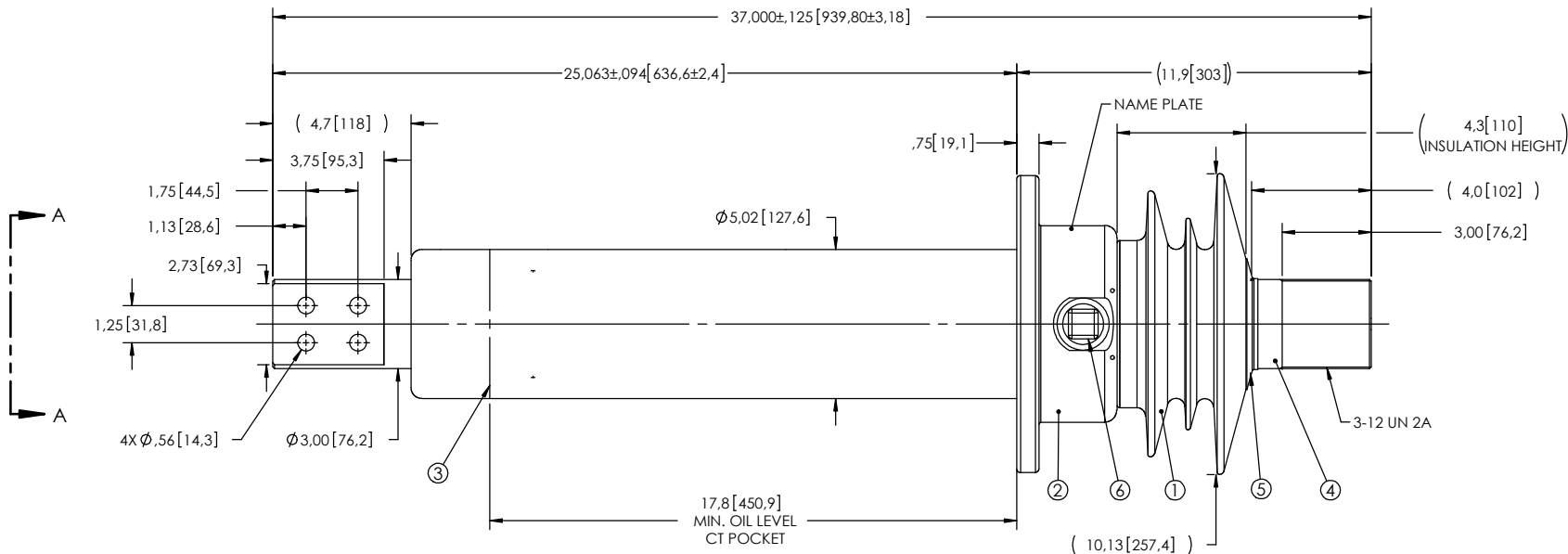


NOTES:

- 1 CREEPAGE DISTANCE: 13.2"/335mm
- 2 ARC DISTANCE: 7.5"/191mm
- 3 NOMINAL VOLTAGE: 15kV
- 4 NOMINAL CURRENT: 3000A
- 5 WITHSTAND VOLTAGE AT 60 sec.: 50kV
- 6 B.I.L. : 110kV
- 7 ROUTINE TEST ACCORDING TO: IEEE C57.19.01
- 8 MAX. TORQUE APPLIED ON FLANGE BOLTS: 70 lbf x ft /94.9 N.m
- 9 WEIGHT 115 lbs /52.2 kg

REVISIONS					
ZONE	REV.	DESCRIPTION	DRAWN BY	DATE	APPR.



ITEM NO.	QTY	DRAWING NO.	PART NO.	DESCRIPTION	NOTE / MAT'L
6	1	S-1001-2022		CAPACITANCE TAP ASSEMBLY	ALUMINUM
5	1	S-3529-2532-0		CAP	COPPER
4	1	S-3190-9435		ROD ASSEMBLY	COPPER
3	1	S-6635-6378		SHIELD	COPPER
2	1	S-8264-9272		FLANGE	ALUMINUM
1	1	S-3190-9434	-001	CASTING, CYCLOALIPHATIC RESIN	EC-APG-02

PARTS LIST

GENERAL TOLERANCES (UNLESS OTHERWISE SPECIFIED)

X. ±0.125
 .X ±0.094
 .XX ±0.063
 .XXX ±0.010
 ANGLES ±0.25°
 RADIUS ±0.031

REMOVE BURRS AND
 BREAK SHARP EDGES

DIMENSIONS ARE IN
 INCHES
 (UNLESS OTHERWISE SPECIFIED)

Electro Composites
solid HV bushings solution

TITLE:
SDC® BUSHING 15kV 3000A
MODEL: 110-030-T-995-00

DRAWN BY: J.N.PILOTTE	DATE: 2017/08/08	FORMAT: A	CAGE CODE	DRAWING NO.: S-3190-9434	REVISION: NR
PROJECT ENG.:	PROJECT MANAGER:	SCALE: 1:6	GENERATED BY: SolidWorks 2013	SHEET: 1 of 1	

This drawing is the proprietary property of Electro Composites (2008) ULC, not part of the public domain, and is issued with the express understanding and agreement that it is not to be reproduced or copied in whole or in part or issued for furnishing information to others, or used directly or indirectly, in any way detrimental to the interest of Electro Composites (2008) ULC and is to be returned upon request by Electro Composites (2008) ULC. All Rights Reserved.