

SPACER BAR PROVIDED TO ASSIST IN POSITIONING CLAMP ON INSULATOR

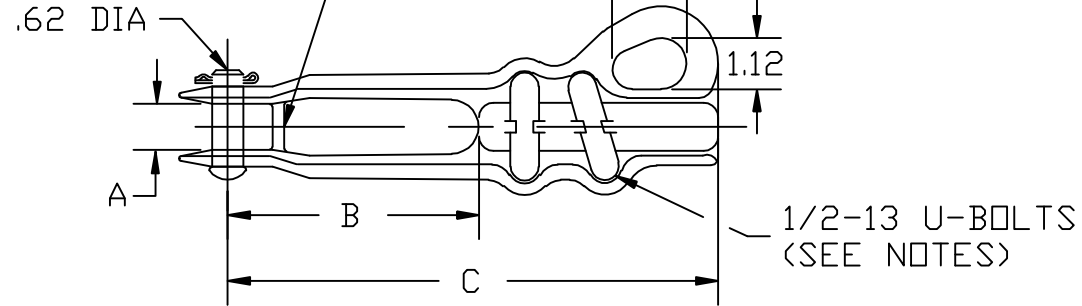
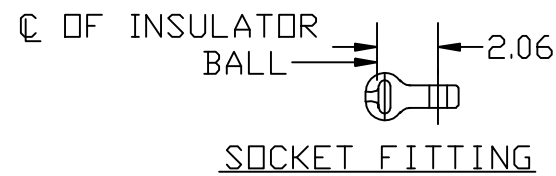
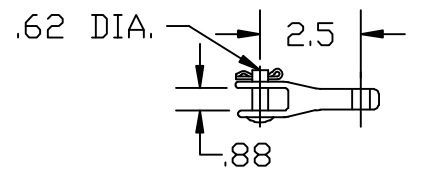


FIG. 1



SOCKET FITTING



CLEVIS FITTING

NOTES:

1. MATERIAL- BODY & KEEPER-356-T6 ALUMINUM ALLOY.
U-BOLTS & NUTS STEEL-HDG
CLEVIS PINS - HDG STEEL.
COTTER PINS - STAINLESS STEEL.
CLEVIS OR SOCKET FITTING - DUCTILE IRON HDG
2. THIS NOTE IS OBSOLETE.
3. END FITTING MAY BE ORDERED BY SPECIFYING [C] (CLEVIS) OR [S] (SOCKET) IN CATALOG NUMBER. EXAMPLE: ADS-60-S FOR ADS-60 WITH SOCKET.
4. THIS NOTE IS OBSOLETE.
5. ADS-48 HAS 3/8-16 U-BOLTS, ADS-155 HAS 5/8-11 U-BOLTS
6. LOCKWASHERS MAY BE MECHANICAL PLATED OR HOT DIP GALVANIZED.
7. ADS-48 AND ADS-88 MAY BE FURNISHED WITH 3/8 LONGER U-BOLTS- ADD SUFFIX NYSEG.
9. ADS-47-L-N HAS NO SPACER BAR.
10. ADS-116-N-FPC HAS 4.31 LONG U-BOLTS.
11. ANDERSON PRODUCT SPECIFICATION 56,007.
12. FOR USE OF A FLATWASHER INSTEAD OF A LOCKWASHER- ADD SUFFIX FW.
13. TO OBTAIN CLAMP WITH BOTH FLAT AND LOCK WASHERS, ADD SUFFIX LFW AS NOTED. LOCKWASHER IS ASSEMBLED BETWEEN THE FLAT WASHER AND HEX NUT. 'HQ' SUFFIX ALSO GETS FLAT AND LOCK WASHERS.
14. APPLY O-RINGS TO U-BOLT ENDS TO PREVENT NUT LOSS IN TRANSIT.
15. RUN NUTS ON TIGHT THEN BACK OFF HALF THE EXPOSED U-BOLT THREAD LENGTH.
16. RUN NUTS ON TIGHT TO SEAT THEN BACK OFF APPROXIMATELY .25" FOR SHIPMENT.
17. ALL ADS-60 CLAMP BODY U-BOLT HOLES HAVE A 2 1/32" (.656") DIAMETER AT THE MOLD PARTING LINE (MIN. DIA).
18. ADD SUFFIX 'NSB' FOR PARTS WITH 'NO SPACER BAR'.
19. ALL HARDWARE MUST MEET OR EXCEED CSA G164 FOR PRODUCTS WITH 'HQ' SUFFIX.
20. ALL DIMENSIONS ARE FOR REFERENCE ONLY.

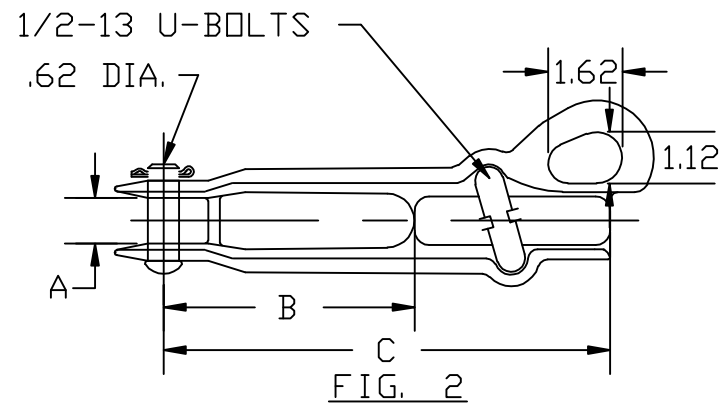
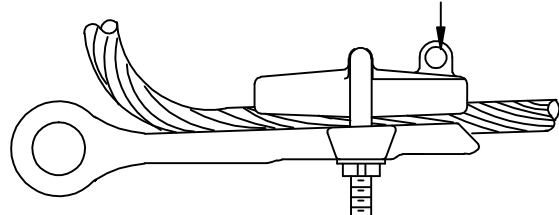


FIG. 2

LIFTING EYE DIAMETER-SEE TABLE



CATALOG NUMBER	DECIMAL RANGE		CONDUCTOR SIZE AWG OR MCM				BODY FIG.	DIMENSIONS IN INCHES			ULTIMATE STRENGTH IN POUNDS		LIFT EYE ID	NOTE NUMBER
	MIN.	MAX.	ALUMINUM		ACSR			A	B	C	BODY	SAG. EYE		
ADS-47-N	.18	.47	# 6 7 STR	3/0 19 STR	# 6 6/1	101.8 12/7	2	.69	2.12	5.38	7,000	4,000	.750	16
ADS-48-N	.18	.502	# 6 7 STR	3/0 19 STR	# 6 6/1	3/0 6/1	1	.69	3.88	7.62	7,000	4,000	.760	16
ADS-60-N	.19	.60	# 4 7 STR	266.8 19 STR	# 6 6/1	159.0 12/7	1	.75	4	8.25	8,000	5,000	.660	16, 17
ADS-61-N	.19	.61	# 4 7 STR	266.8 19 STR	# 6 6/1	266.8 18/1	2	.69	3	8.06	7,000	5,000		16
ADS-74-N	.25	.74	# 3 7 STR	400 37 STR	# 4 6/1	397.5 36/1	1	.75	4.09	8.84	8,000	6,000		16
ADS-88-N	.31	.88	# 1 7 STR	556.5 37 STR	# 2 6/1	556.5 18/1	1	.94	4.5	9	10,000	6,000	.624	16
ADS-116-N	.31	1.16	# 1 7 STR	1000 61 STR	# 2 6/1	954 36/1	1	1	5.5	10.5	15,000	7,000	.760	16
ADS-155-N	.72	1.55	397.5 19 STR	1800 127 STR	336.4 26/7	1590 54/19	1	1	6	11.75	15,000	10,000	.750	16
ADS-47-L-N	.18	.47	# 6 7 STR	3/0 19 STR	# 6 6/1	101.8 12/7	2	.69	3.5	6.75	7,000	4,000	.750	9, 16
ADS-60-L-N	.19	.60	# 4 7 STR	266.8 19 STR	# 6 6/1	159.0 12/7	1	.75	6	10.62	8,000	5,000	.660	16
ADS-88-L-N	.31	.88	# 1 7 STR	556.5 37 STR	# 2 6/1	556.5 18/1	1	.94	7.5	12	10,000	6,000	.624	16
ADS-116-N-FPC	.74	1.16	450 37 STR	1000 61 STR	336.4 30/7	954 36/1	1	1	5.5	10.5	15,000	7,000	.760	16
ADS-130-N	.64	1.30	336.4 19 STR	1272 61 STR	266.8 26/7	1192.5 45/7	1	1	5.5	10.5	15,000	10,000	.750	16
ADS-60-N-L-FW	.19	.60	# 4 7 STR	266.8 19 STR	# 6 6/1	159.0 12/7	1	.75	4	8.25	8,000	5,000	.660	13,14,15,17
ADS-60-N-HQ	.19	.60	# 4 7 STR	266.8 19 STR	# 6 6/1	159.0 12/7	1	.75	4	8.25	8,000	5,000	.660	11,13,15,17,19
ADS-88-NNSB	.31	.88	# 1 7 STR	556.5 37 STR	# 2 6/1	556.5 18/1	1	.94	4.5	9	10,000	6,000	.624	16,18
ADS-88-N-HQ	.31	.88	# 1 7 STR	556.5 37 STR	# 2 6/1	556.5 18/1	1	.94	4.5	9	10,000	6,000	.624	11,13,15,19

48266	11/28/12	SD	SD	ANDERSON®	HUBBELL® POWER SYSTEMS
EC #	DATE	CHG BY	RESP ENG		
DESC OF DWG: ADDED LIFTING EYE ID COLUMN. OBSOLETE NOTE 2. ADS61N & ADS74N ARE OBSOLETE. -- REASON (S) FOR CHANGE: -- DISPOSITION OF MAT'L: --				CONFIDENTIAL: THIS DRAWING AND ITS CONTENTS ARE CONFIDENTIAL AND THE EXCLUSIVE PROPERTY OF HUBBELL POWER SYSTEMS. NO PUBLICATION, DISTRIBUTION OR COPIES MAY BE MADE WITHOUT THE WRITTEN CONSENT OF HUBBELL POWER SYSTEMS. HUBBELL POWER SYSTEMS UNPUBLISHED ALL RIGHTS RESERVED UNDER THE COPYRIGHT LAWS.	TITLE DEADEND, CLAMP
SIZE B		DWG NO. C-8253			
DO NOT SCALE THIS DRAWING		DRN BY TR		DATE 11/17/99	
				SHEET 1 OF 1	