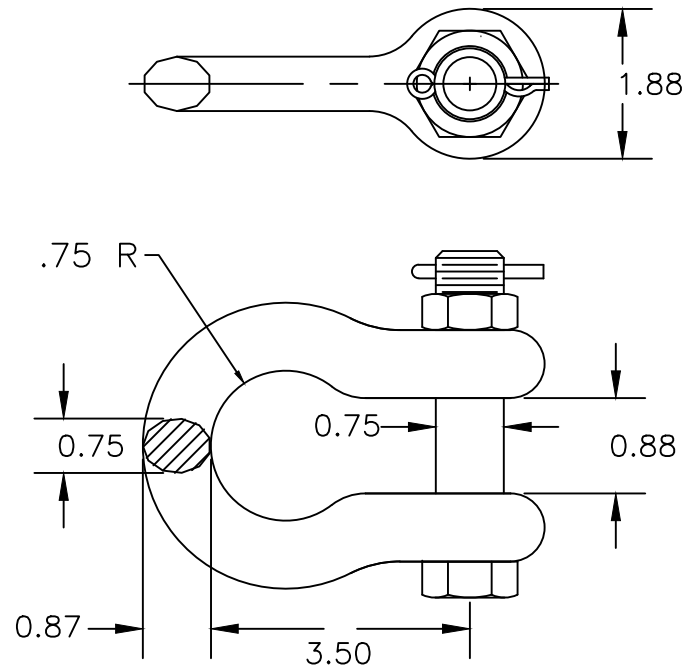


NOTES:

- 1) MATERIAL: BODY-GALV. FORGED STEEL, HARDNESS HRC 20-31.
 HUMPBACK COTTER PIN - STAINLESS STEEL
 HEX HEAD CLEVIS BOLT & HEX JAM NUT - GALV. STEEL.
- 2) DIMENSIONS IN INCHES.
- 3) ULTIMATE STRENGTH 60,000 LBS MIN WHEN TESTED PER IEEE C135.61
- 4) GALVANIZATION PER ASTM A153
- 5) WEIGHT 2.4 LBS



--	--	--	--	ANDERSON TOLERANCE CHART	HUBBELL POWER SYSTEMS
EC #	DATE	CHG BY	RESP ENG		
DESC OF DWG: -- -- -- --				CONFIDENTIAL: THIS DRAWING AND ITS CONTENTS ARE CONFIDENTIAL AND THE EXCLUSIVE PROPERTY OF HUBBELL POWER SYSTEMS. NO PUBLICATION, DISTRIBUTION OR COPIES MAY BE MADE WITHOUT THE WRITTEN CONSENT OF HUBBELL POWER SYSTEMS. HUBBELL POWER SYSTEMS UNPUBLISHED. ALL RIGHTS RESERVED UNDER THE COPYRIGHT LAWS.	SIZE DWG NO. CAT / PART / ASSY NO. REV
REASON (S) FOR CHANGE: --					A CUTSHEET AS-50-BNK B
DISPOSITION OF MAT'L: --					DO NOT SCALE THIS DRAWING DRN BY MWA DATE 8/25/11 SHEET 1 OF 1