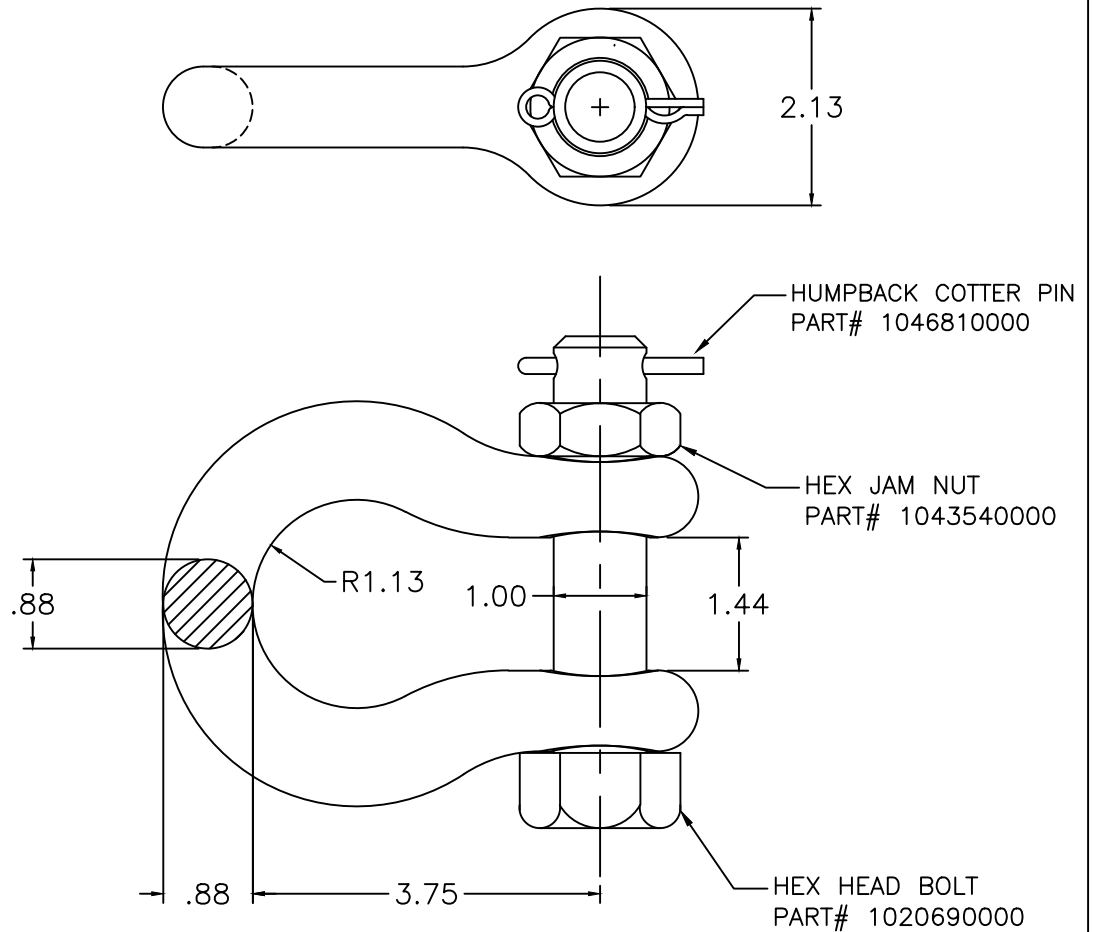


NOTES:

- 1) MATERIAL: BODY – GALVANIZED FORGED STEEL.
COTTER PIN – STAINLESS STEEL
CLEVIS BOLT & NUT – GALV. STEEL.
- 2) DIMENSIONS IN INCHES.
- 3) ULTIMATE STRENGTH 80,000 LB.
- 4) GALVANIZATION PER ASTM A153



EC #	DATE	CHG BY	RESP ENG	ANDERSON [®] TOLERANCE CHART		HUBBELL [®] POWER SYSTEMS				
---	---	---	---	CONFIDENTIAL: THIS DRAWING AND ITS CONTENTS ARE CONFIDENTIAL AND THE EXCLUSIVE PROPERTY OF HUBBELL POWER SYSTEMS. NO PUBLICATION, DISTRIBUTION OR COPIES MAY BE MADE WITHOUT THE WRITTEN CONSENT OF HUBBELL POWER SYSTEMS. HUBBELL POWER SYSTEMS UNPUBLISHED. ALL RIGHTS RESERVED UNDER THE COPYRIGHT LAWS.		TITLE ANCHOR SHACKLE 80K LBS ULT				
DESC OF DWG:						SIZE	DWG NO.	CAT / PART / ASSY NO.		REV
REASON (S) FOR CHANGE: ---						A	CUTSHEET	AS-60-BNK		B
DISPOSITION OF MAT'L: ---						DO NOT SCALE THIS DRAWING	DRN BY MWA	DATE 1/6/12	SHEET 1 OF 1	