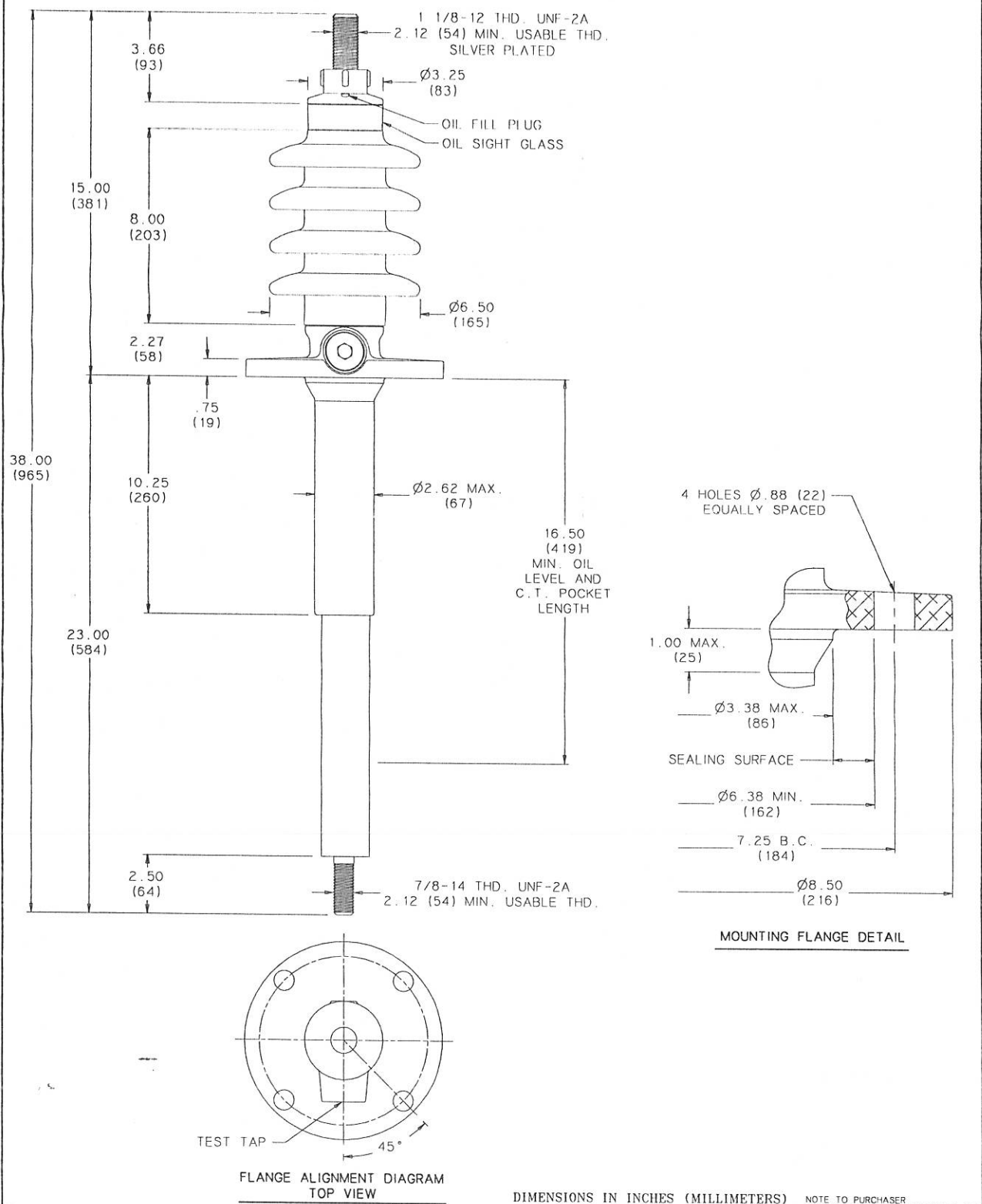


**LAPP** BUSHING DIVISION  
 LEROY, N.Y. 14482  
 Insulator Company (716) 768-6221

ELECTRICAL VALUES			
kV CLASS	15 kV	BIL	110 kV
Uy	10 kV		
CURRENT RATING			
1200A BOTTOM CONNECTION IN 55°C RISE OIL			
MIN. CREEP	17.00 (432)	MIN. STRIKE	9.50 (241)
CREEP/Uy	1.70 (43)	STD.	IEEE C57.19.00
PCB CONTENT OF OIL IS LESS THAN 1 ppm			

DWG.	CATALOG NUMBER	GLAZE COLOR
SD	B89111 160	BROWN
SD	B89111 160 70	L1 GRAY
TITLE		
IEEE STANDARD BUSHING		
PRC BUSHING		
7.25 (184) B.C.		
7/8-14 THREAD BOTTOM TERMINAL		

DWG. DATE	3-6-01	REV. DATE	
DWN.	Eric H.	CHK.	W. Young
		APP.	R. Z.
MAXIMUM ALTITUDE	10000 ft. (3000 m.)		
NET WEIGHT	30 lbs. ( 14 kg.)		
ANGLE OF INCLINATION FROM THE VERTICAL	0° TO 70°		



LAST REVISION

NOTE TO PURCHASER  
 ALL SALES OF LAPP PRODUCTS ARE SUBJECT TO OUR STANDARD TERMS AND CONDITIONS AND THE LIMITED WARRANTIES THEREUNDER

SCALE 1/4