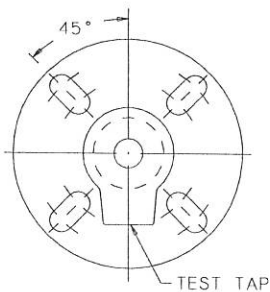
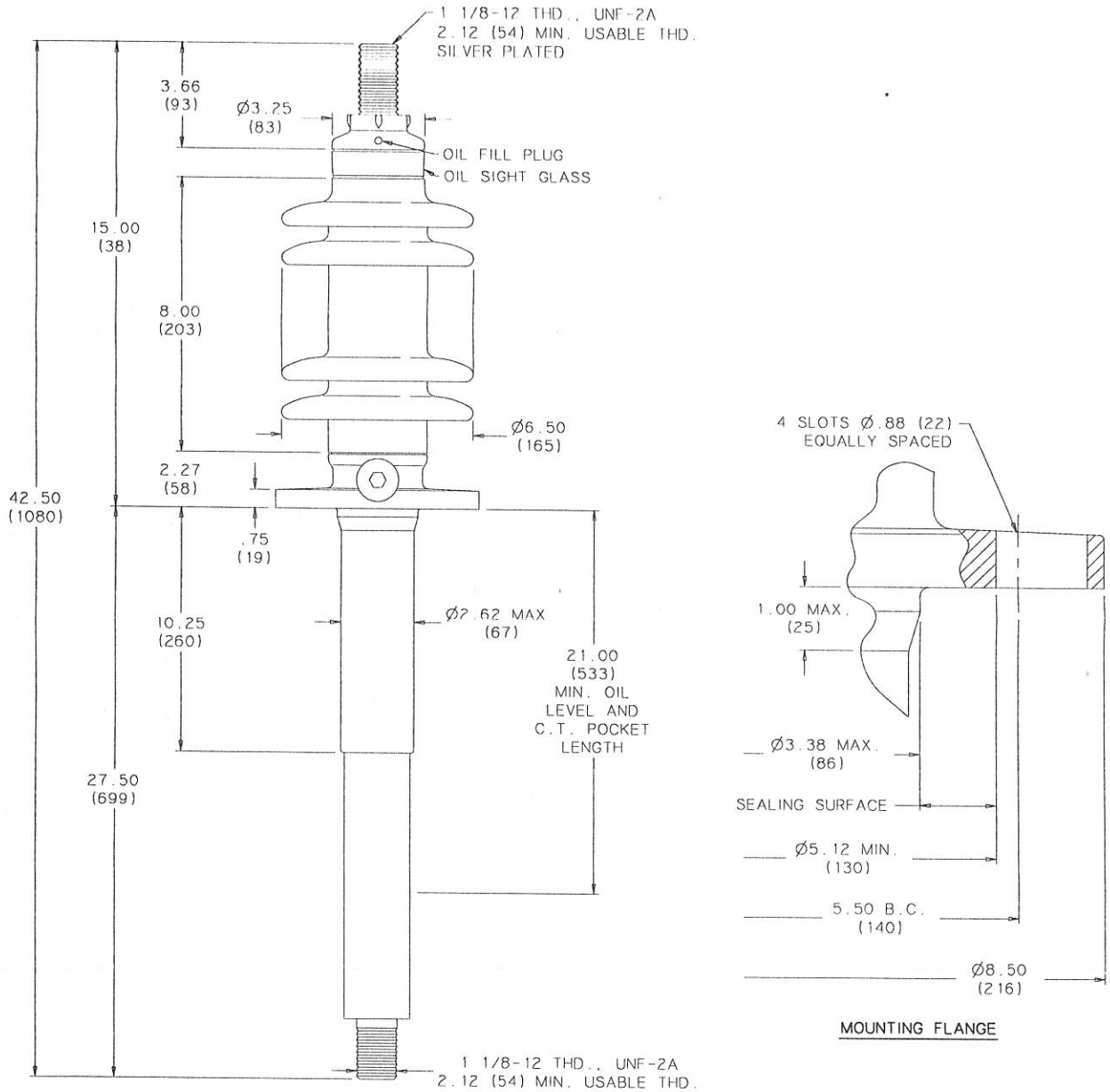


DWG. DATE 1-23-98		REV. DATE	TITLE PRC BUSHING		DWG.	CATALOG NUMBER	UPPER PORCELAIN GLAZE COLOR
MIN. CREEP	17.00 (432)	kV CLASS	15	kV	SD	B-89113-117	CHOCOLATE
CREEPAGE PER Uy	1.70 (43)	Uy	10	kV	SD	B-89113-117-70	LT. GRAY No.70
MIN. STRIKE DIST.	9.50 (241)	BIL	110	kV	CURRENT RATING		
TEST STANDARD IEEE				NET WEIGHT	1200 AMP BOTTOM CONN.		
ANGLE INCLINATION FROM VERTICAL = 0° TO 70°					@ 95°C MAX. OIL TEMPERATURE		



FLANGE ALIGNMENT DIAGRAM
TOP VIEW

Bk. No. 7A2A

LAST REVISION

NOTE TO PURCHASER
ALL SALES OF LAPP PRODUCTS ARE
SUBJECT TO OUR STANDARD TERMS
AND CONDITIONS AND THE LIMITED
WARRANTIES THEREUNDER

DIMENSIONS IN INCHES (MILLIMETERS)